

www.visionaryhomes.com


Summerlyn

3 Elevations Available

 3,709 Total Sq.Ft.

 1,885 Finished Sq.Ft.

 3 Bedrooms

 2.5 Bathrooms

 2 - 3 Car Garage

The Summerlyn rambler has become a favorite among discerning buyers, and it's easy to see why. Featuring 3 beds and 2-2.5 baths, grand windows cast natural light over an open-concept living room, dining room, and kitchen. The gourmet kitchen is a culinary enthusiast's dream, complete with a large walk-in pantry. The dining and family room connect with the kitchen for you and your family to enjoy cooking, eating, and watching movies. Thoughtful touches abound throughout this floor plan, with ample closet space ensuring that organization is effortless and stylish. The exquisite owner's suite features a luxurious owner's bath and a spacious walk-in closet.



*Visionary Homes reserves the right to change prices without notice. Approximate square footage and options shown in plan may not be included in base price.

435.228.4702
visionaryhomes.com



www.visionaryhomes.com

MAIN LEVEL W/ UNFINISHED BASEMENT

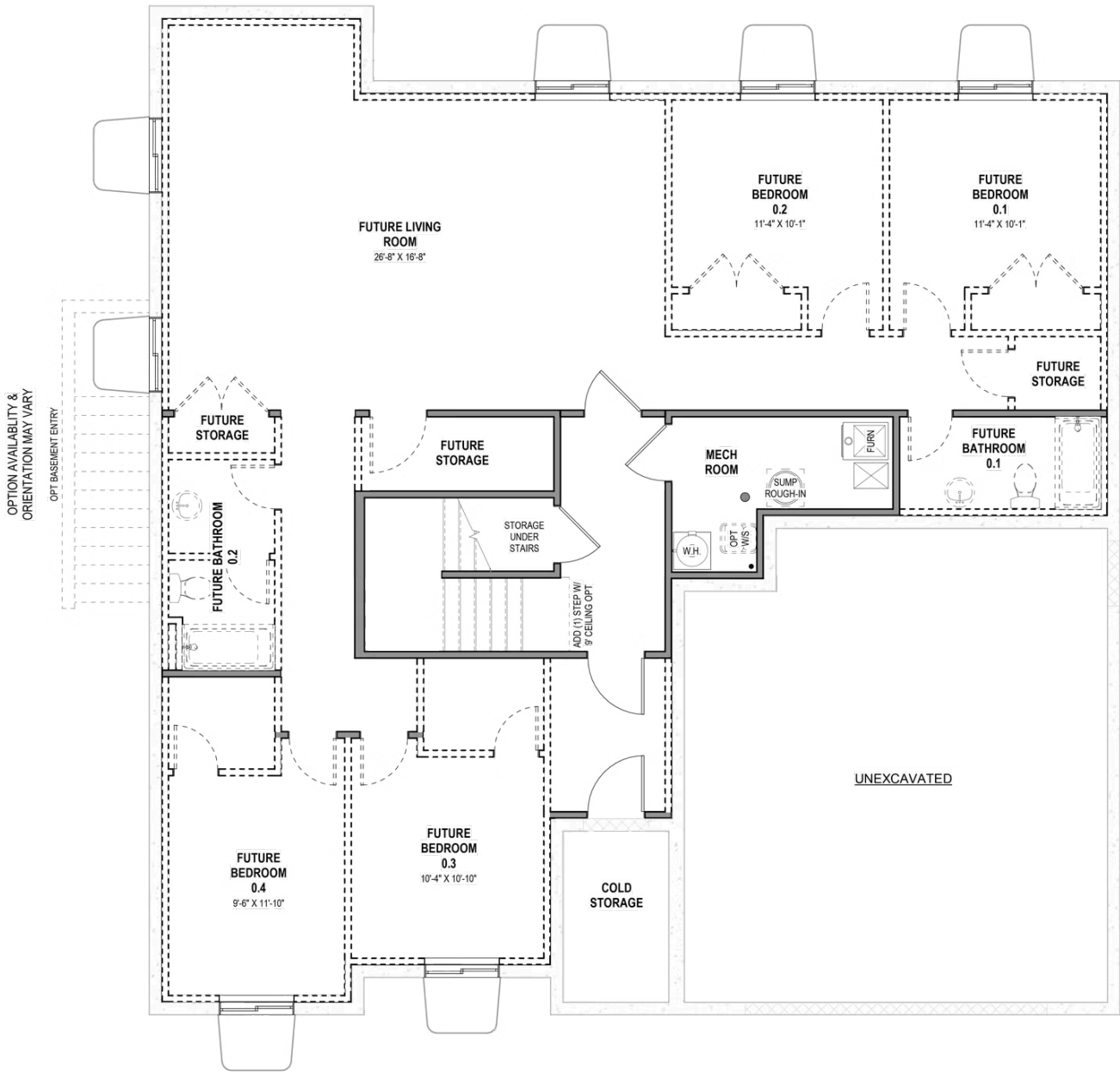


*Visionary Homes reserves the right to change prices without notice. Approximate square footage and options shown in plan may not be included in base price.



www.visionaryhomes.com

UNFINISHED BASEMENT



*Visionary Homes reserves the right to change prices without notice. Approximate square footage and options shown in plan may not be included in base price.