

[www.visionaryhomes.com](http://www.visionaryhomes.com)


# Remington

3 Elevations Available

 4,447 Total Sq.Ft.

 2,876 Finished Sq.Ft.

 4 - 8 Bedrooms

 2.5 - 3 Bathrooms

 2 - 3 Car Garage

With 4 bedrooms and 2.5 bathrooms, the Remington 2-story floor plan is perfect for families looking for a high-quality home that will accommodate them for years to come. Just beyond the entryway, floor to ceiling windows illuminate the open-concept main living area. A gourmet kitchen with a walk-in pantry and spacious counters create a deluxe cooking experience. The primary suite brings luxury and relaxation to another level with the primary bath and massive walk-in closet with windows. Looking for additional space for a home office, playroom, or music room? From an open loft upstairs to the unfinished basement, the Remington is full of rooms with the potential to become more.



Craftsman



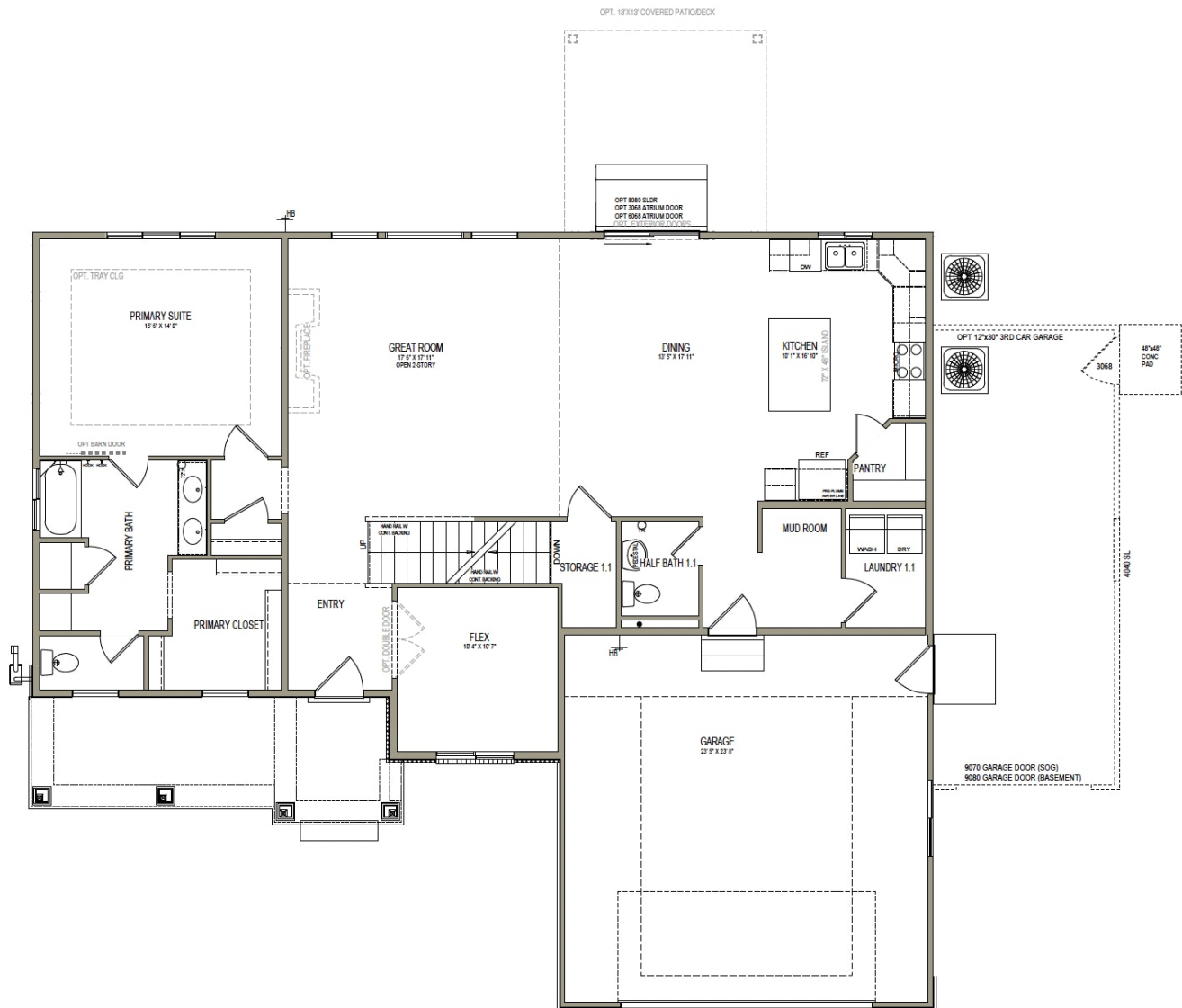
Farmhouse



Traditional w/Stucco

[www.visionaryhomes.com](http://www.visionaryhomes.com)

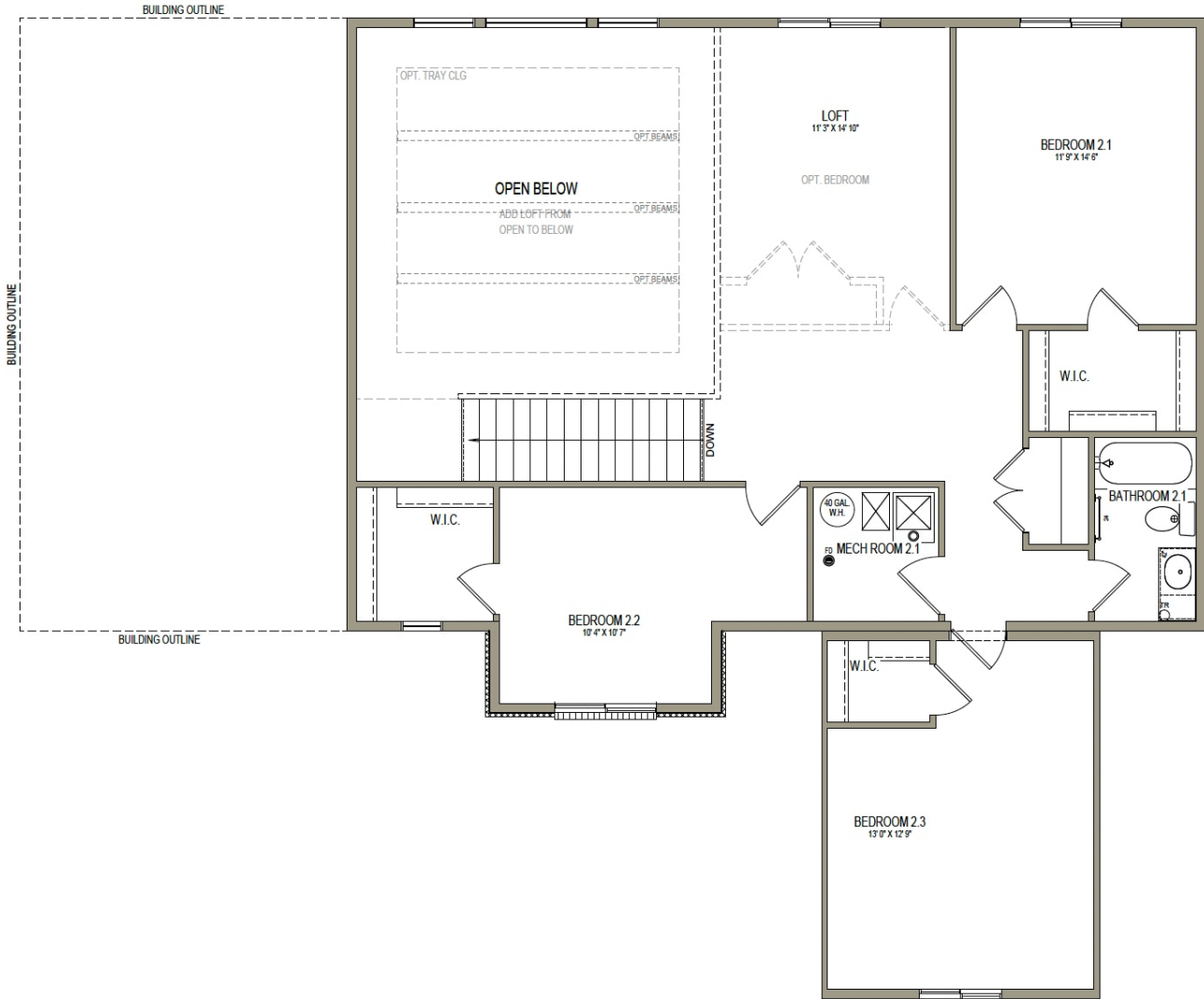
## MAIN LEVEL W/ UNFINISHED BASEMENT



\*Visionary Homes reserves the right to change prices without notice.  
Approximate square footage and options shown in plan may not be included in base price.

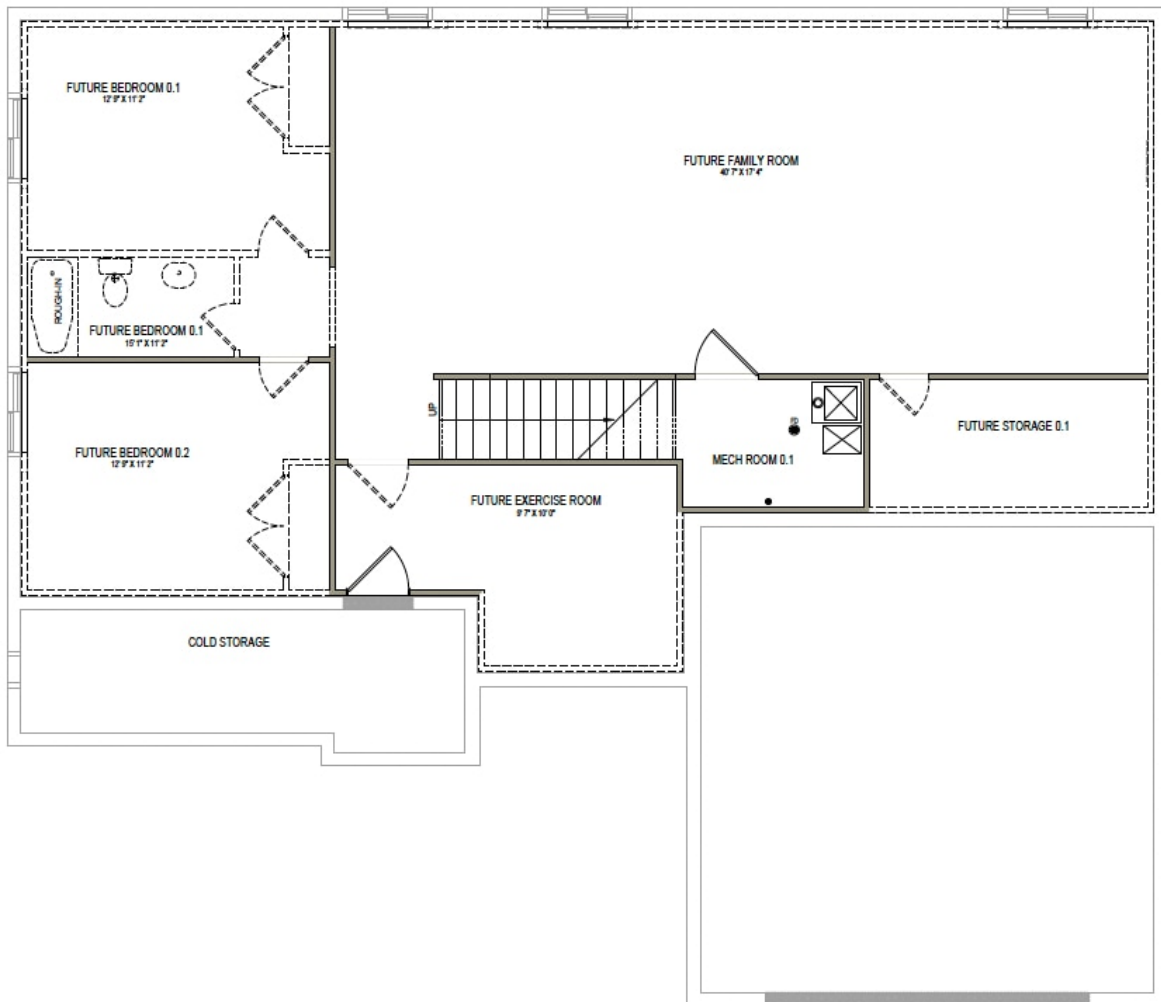
**435.228.4702**  
[visionaryhomes.com](http://visionaryhomes.com)

## UPPER LEVEL



[www.visionaryhomes.com](http://www.visionaryhomes.com)

## UNFINISHED BASEMENT



\*Visionary Homes reserves the right to change prices without notice.  
Approximate square footage and options shown in plan may not be included in base price.

435.228.4702  
[visionaryhomes.com](http://visionaryhomes.com)