

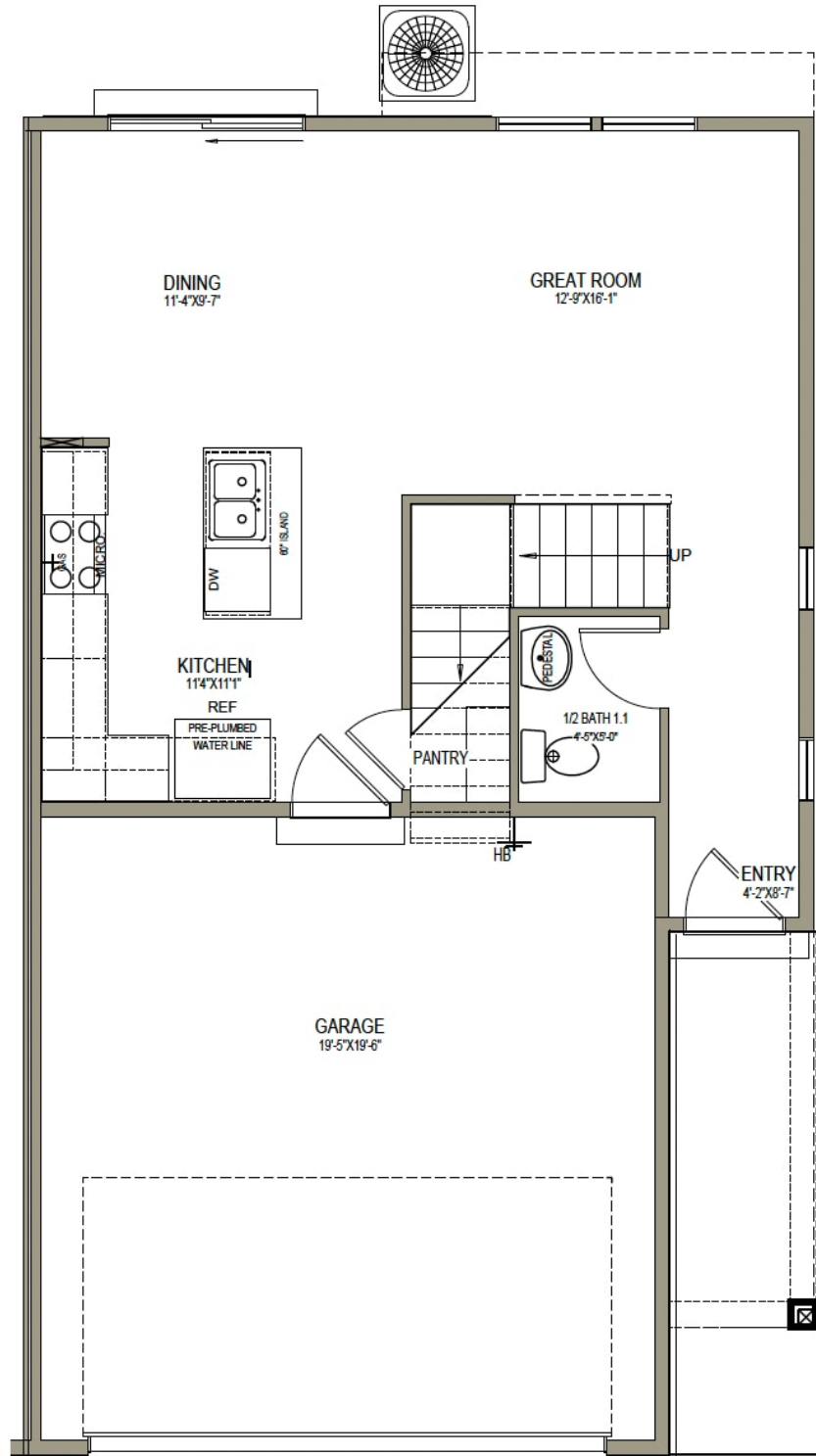
www.visionaryhomes.com**Sale Price****\$None** 1,435 Sq.Ft. 1,435 Sq.Ft. 3 Bedrooms 2 Car Garage**1638 North 840 West, Salem UT 84653**

The Benton townhome provides ample windows, bringing plenty of natural light to your space. Featuring 3 beds and 2.5 baths, this townhome welcomes you in through the entry to the open living area with the family room, dining, and kitchen areas. The kitchen features a walk-in pantry and kitchen island for a functional, yet ideal cooking space. Upstairs you'll discover the owner's suite featuring an ensuite bath with a spacious walk-in closet, additional bedrooms, laundry room, and a loft to transform into a study or lounge space.



*Visionary Homes reserves the right to change prices without notice.
Approximate square footage and options shown in plan may not be included in base price.

435.228.4702
visionaryhomes.com

MAIN LEVEL - SLAB ON GRADE


UPPER LEVEL

