

www.visionaryhomes.com


Lyndhurst

3 Elevations Available

 3,140 Total Sq.Ft.

 1,626 Finished Sq.Ft.

 3 - 7 Bedrooms

 2 - 3 Bathrooms

 2 - 3 Car Garage

A traditional home with a modern layout perfect for you and your family, The Lyndhurst is easy to call home. With 3 beds and 2 baths, an open-concept main living space. Enter in to find a charming front living room to greet you in and take a few steps into a hallway towards the bedrooms and bath. A spacious family room opens to the kitchen and the dining features large windows for plenty of natural light into your home. A large walk-in pantry and island in the kitchen provide you with the perfect space for prepping and cooking for family meals spent together at the dining table. Find the owner's suite near the great room with a spacious owner's bath and walk-in closet, which you'll enjoy most. If more space is needed, an optional finished basement will provide an additional 4 bedrooms, a bath, storage space, and a family room for turning into anything from a lounge space or children's playroom. Two of the bedrooms in the basement showcase walk-in closets.



Craftsman



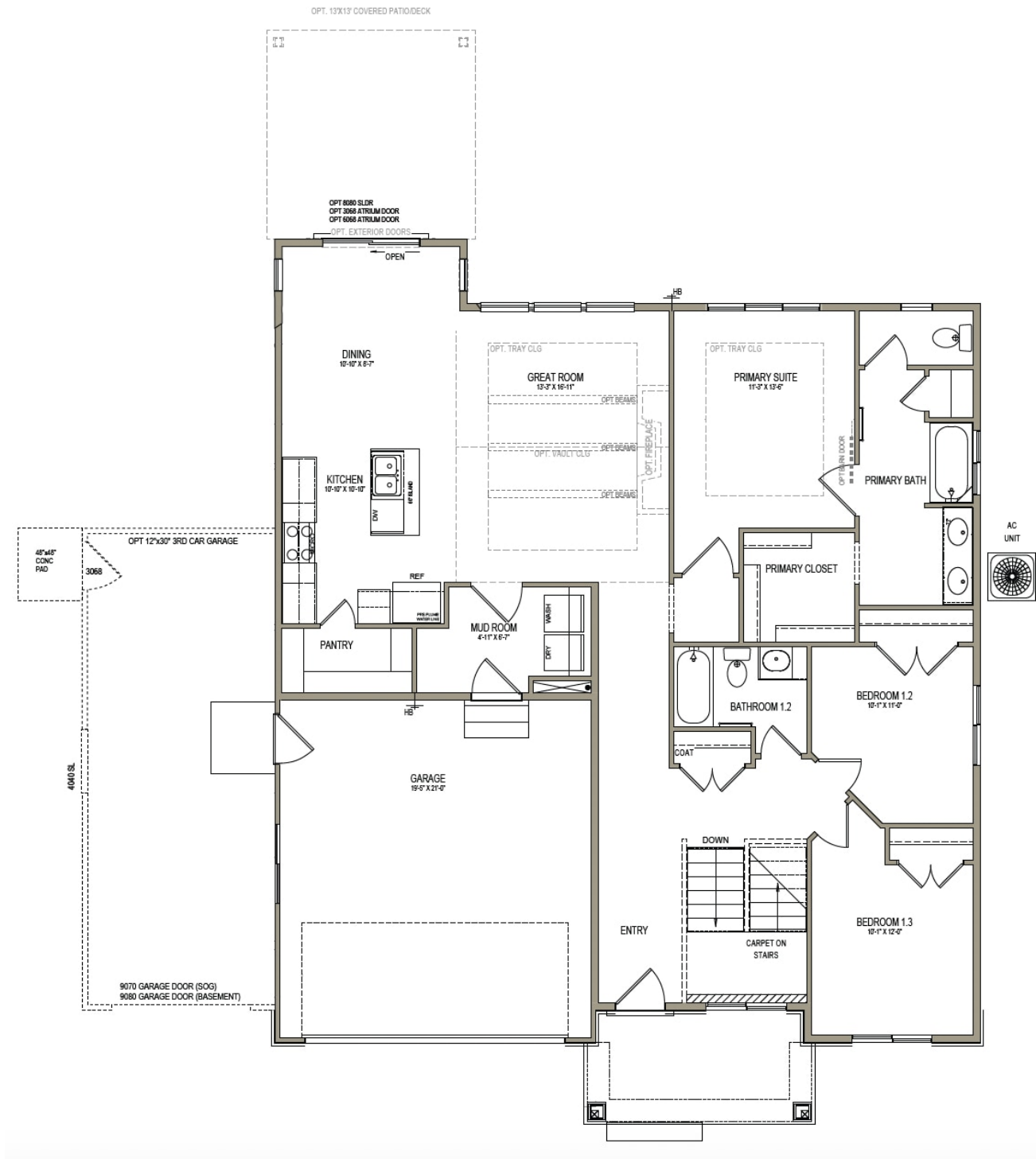
Farmhouse



Traditional w/Stucco

www.visionaryhomes.com

MAIN LEVEL W/UNFINISHED BASEMENT

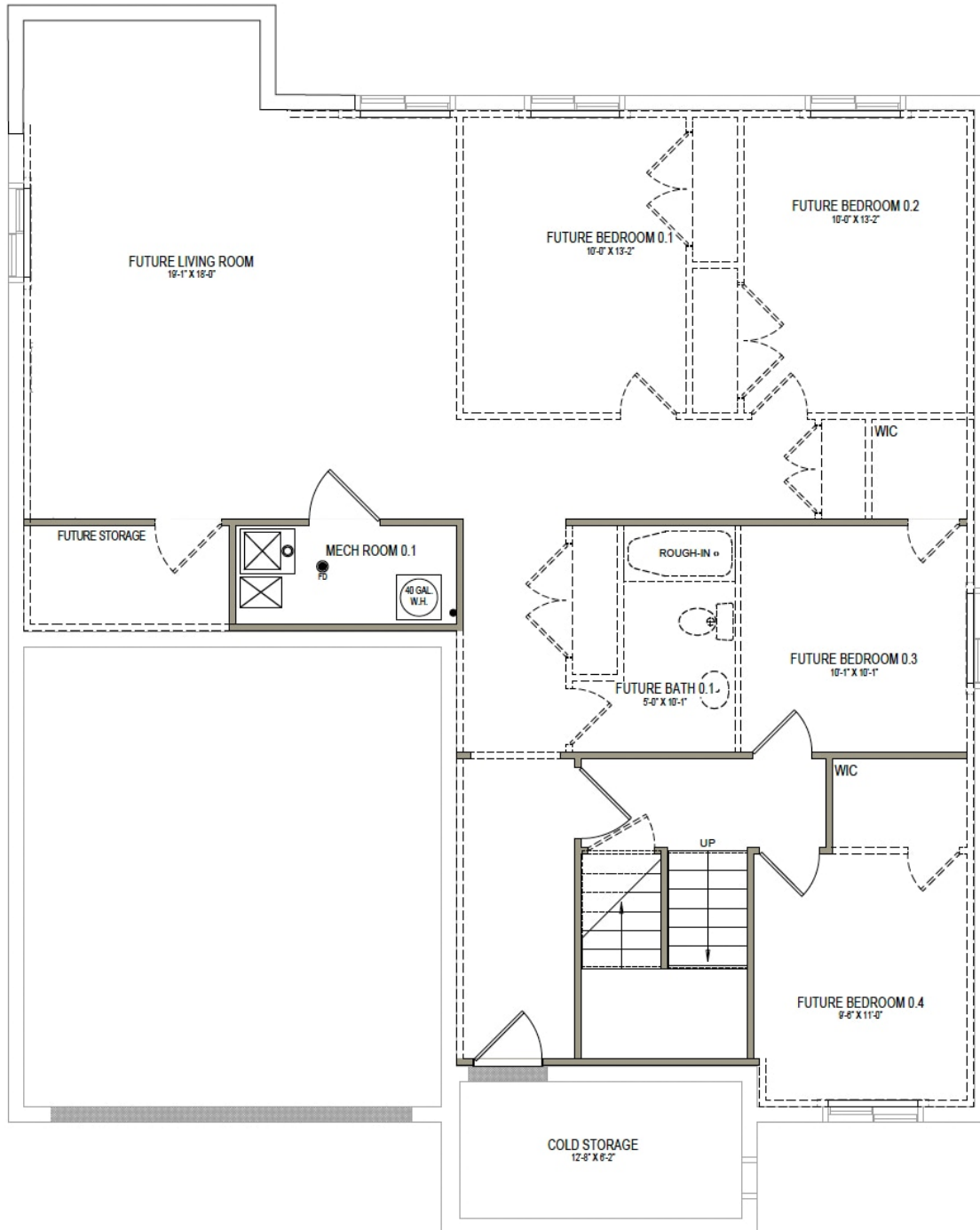


*Visionary Homes reserves the right to change prices without notice.
Approximate square footage and options shown in plan may not be included in base price.

435.228.4702
visionaryhomes.com

www.visionaryhomes.com

UNFINISHED BASEMENT



*Visionary Homes reserves the right to change prices without notice.
Approximate square footage and options shown in plan may not be included in
base price.

435.228.4702
visionaryhomes.com