

www.visionaryhomes.com


Remington

3 Elevations Available

 4,447 Total Sq.Ft.

 2,876 Finished Sq.Ft.

 4 - 8 Bedrooms

 2.5 - 3 Bathrooms

 2 - 3 Car Garage

The breathtaking Remington 2-story floor plan is an open floor plan dream with 4 beds and 2.5 baths. Upon entry, you'll walk into the main living area with floor-to-ceiling windows bringing in plenty of natural light and beauty. A gourmet kitchen with easy access from the garage features a walk-in pantry and lots of counter space for your cooking needs. The open staircase gives this popular floor plan a spacious feel that can't be beaten. The owner's suite brings luxury and relaxation to another level with an owner's bath and a massive walk-in closet with windows. With an open to below loft space upstairs, bedrooms, with two featuring walk-in closets, and a bath. An optional finished basement provides additional living space, bedrooms, a bath, and storage. It's an option to have up to a total of 7 bedrooms and 3.5 bathrooms on this floor plan.



Craftsman



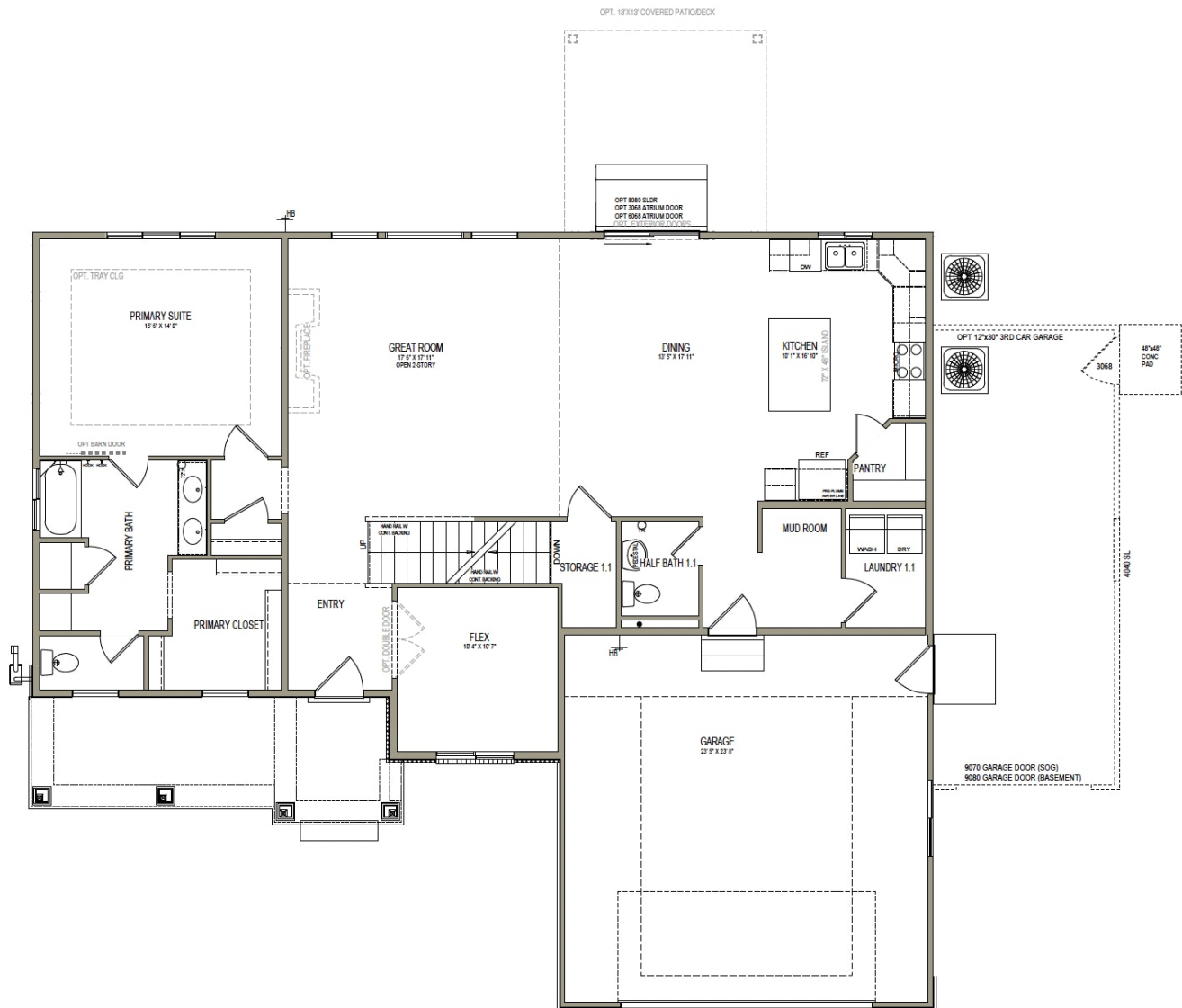
Farmhouse



Traditional w/Stucco

www.visionaryhomes.com

MAIN LEVEL W/ UNFINISHED BASEMENT

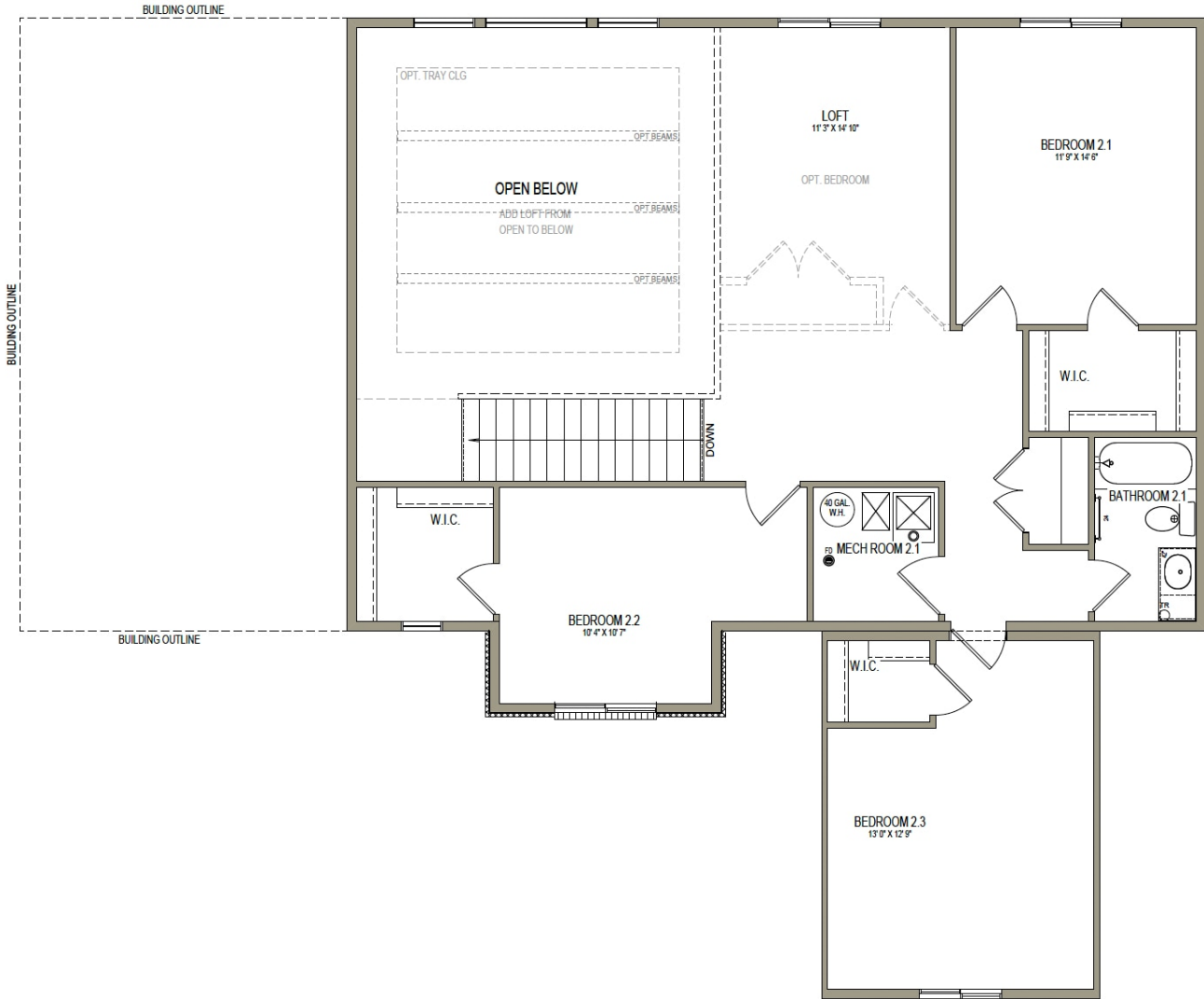


*Visionary Homes reserves the right to change prices without notice.
Approximate square footage and options shown in plan may not be included in base price.

435.228.4702
visionaryhomes.com

www.visionaryhomes.com

UPPER LEVEL

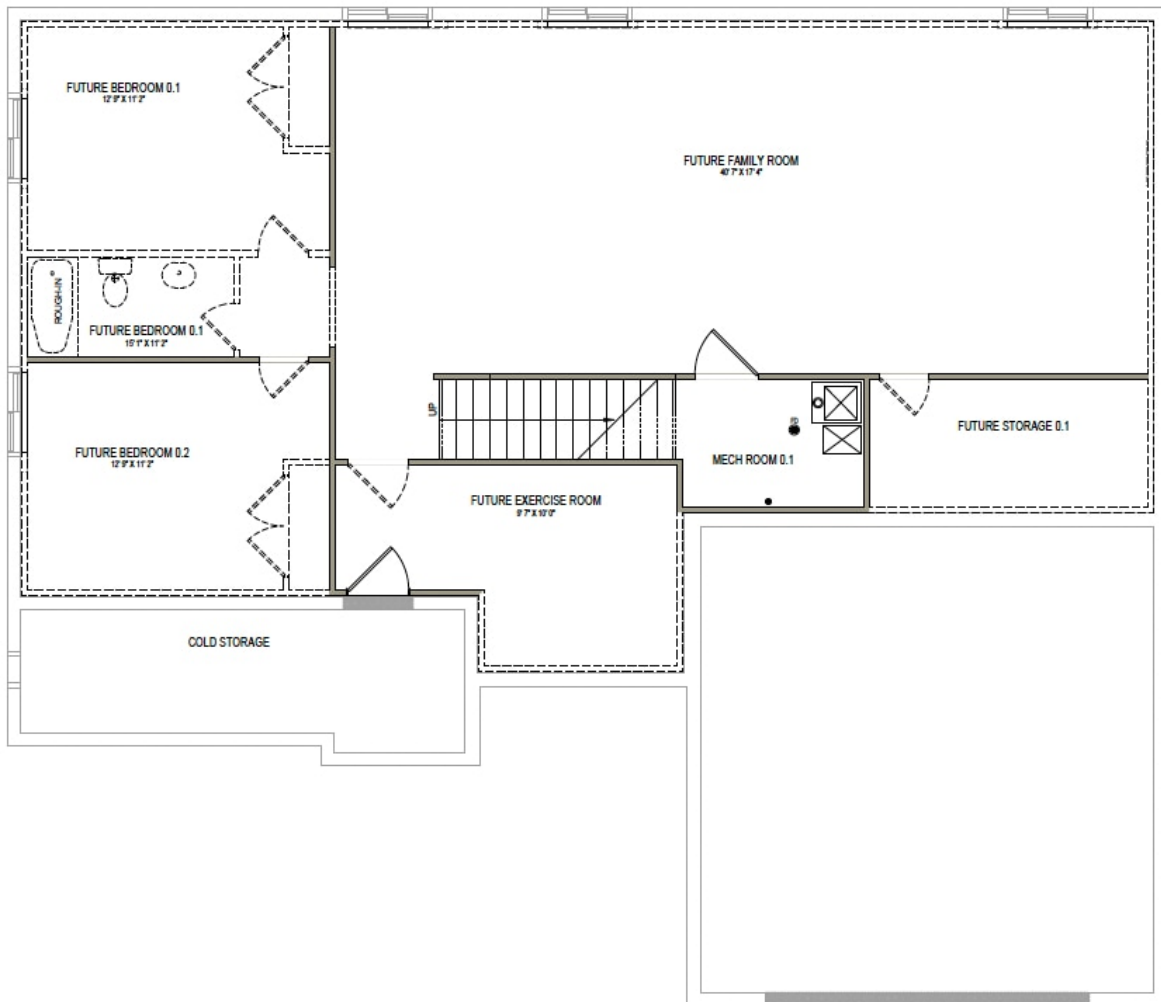


*Visionary Homes reserves the right to change prices without notice.
Approximate square footage and options shown in plan may not be included in base price.

435.228.4702
visionaryhomes.com

www.visionaryhomes.com

UNFINISHED BASEMENT



*Visionary Homes reserves the right to change prices without notice.
Approximate square footage and options shown in plan may not be included in base price.

435.228.4702
visionaryhomes.com