

www.visionaryhomes.com


Summerlyn

3 Elevations Available

-  3,805 Total Sq.Ft.
-  1,967 Finished Sq.Ft.
-  3 - 7 Bedrooms
-  2.5 - 3 Bathrooms
-  2 - 3 Car Garage

With a modern and functional design, The Summerlyn rambler is a fan favorite and for good reason. Featuring 3 beds and 2-2.5 baths, with an open-concept main living space. With an exquisite owner's suite, showcasing a spacious walk-in closet and owner's bath. Convenient closet space is also designed throughout. The gourmet kitchen includes a large walk-in pantry and a kitchen island for all your prepping and cooking needs. The dining and family room connect with the kitchen for you and your family to enjoy spending time together, whether cooking, eating, or watching movies. An optional basement creates up to an additional 4 beds, 1 bath, storage space, and a recreation room for a total of 7 beds and 3 baths.



Craftsman



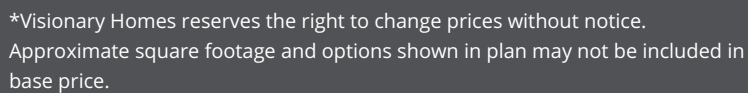
Farmhouse



Traditional w/Stucco

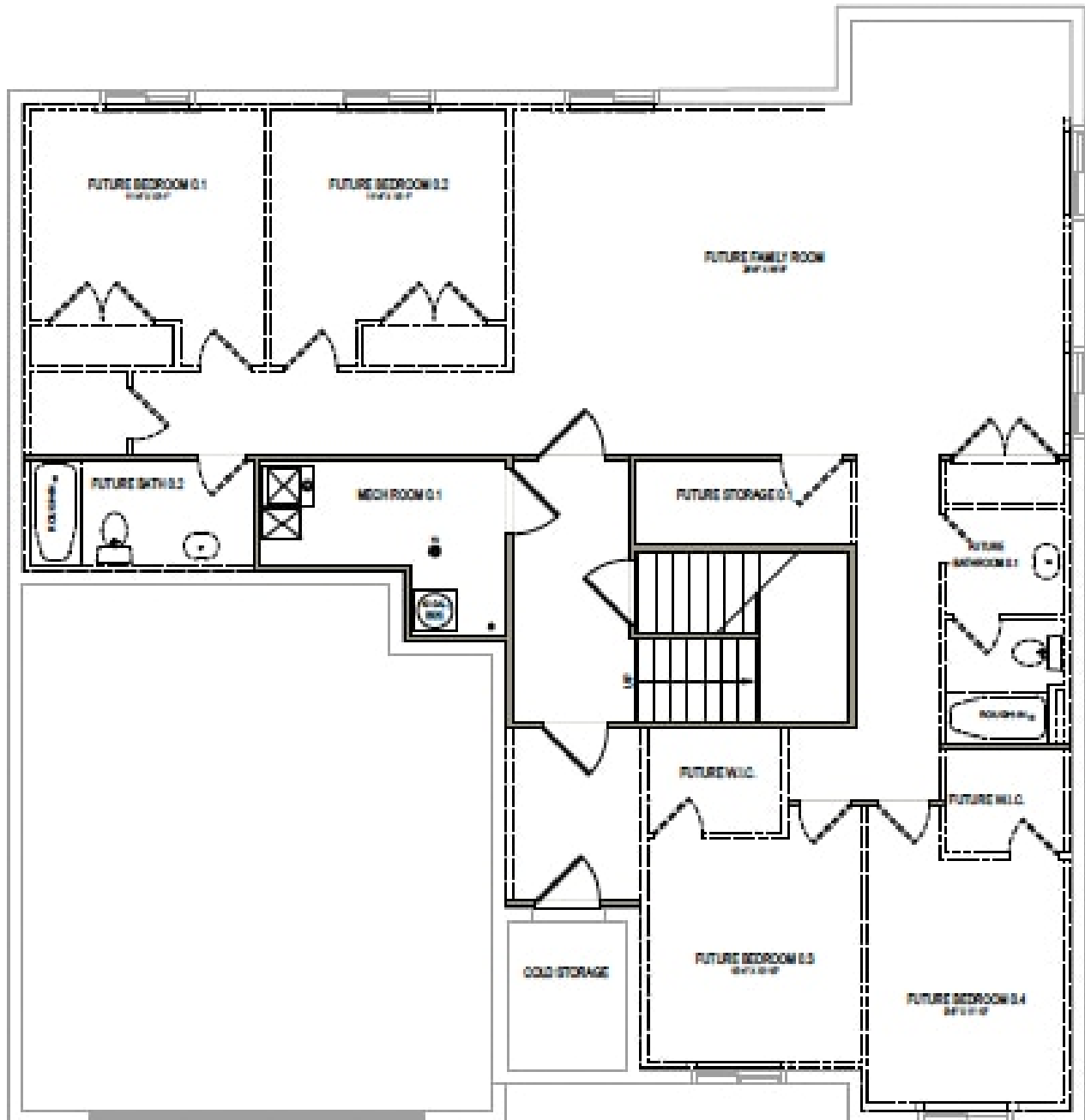
*Visionary Homes reserves the right to change prices without notice.
Approximate square footage and options shown in plan may not be included in base price.

435.228.4702
visionaryhomes.com



www.visionaryhomes.com

UNFINISHED BASEMENT



*Visionary Homes reserves the right to change prices without notice.
Approximate square footage and options shown in plan may not be included in
base price.

435.228.4702
visionaryhomes.com