






[www.visionaryhomes.com](http://www.visionaryhomes.com)



# Fairview

3 Elevations Available

-  2,961 Total Sq.Ft.
-  1,540 Finished Sq.Ft.
-  3 - 6 Bedrooms
-  2 - 3 Bathrooms
-  2 - 3 Car Garage

Let The Fairview invite you in as you'll be greeted by a spacious entry to the great room that is open to the dining and kitchen space. With a total of 3 bedrooms and 2 baths. On one side of the rambler home, you'll discover two bedrooms, a full bath, and a breathtaking owner's suite with a large walk-in closet and bathroom.



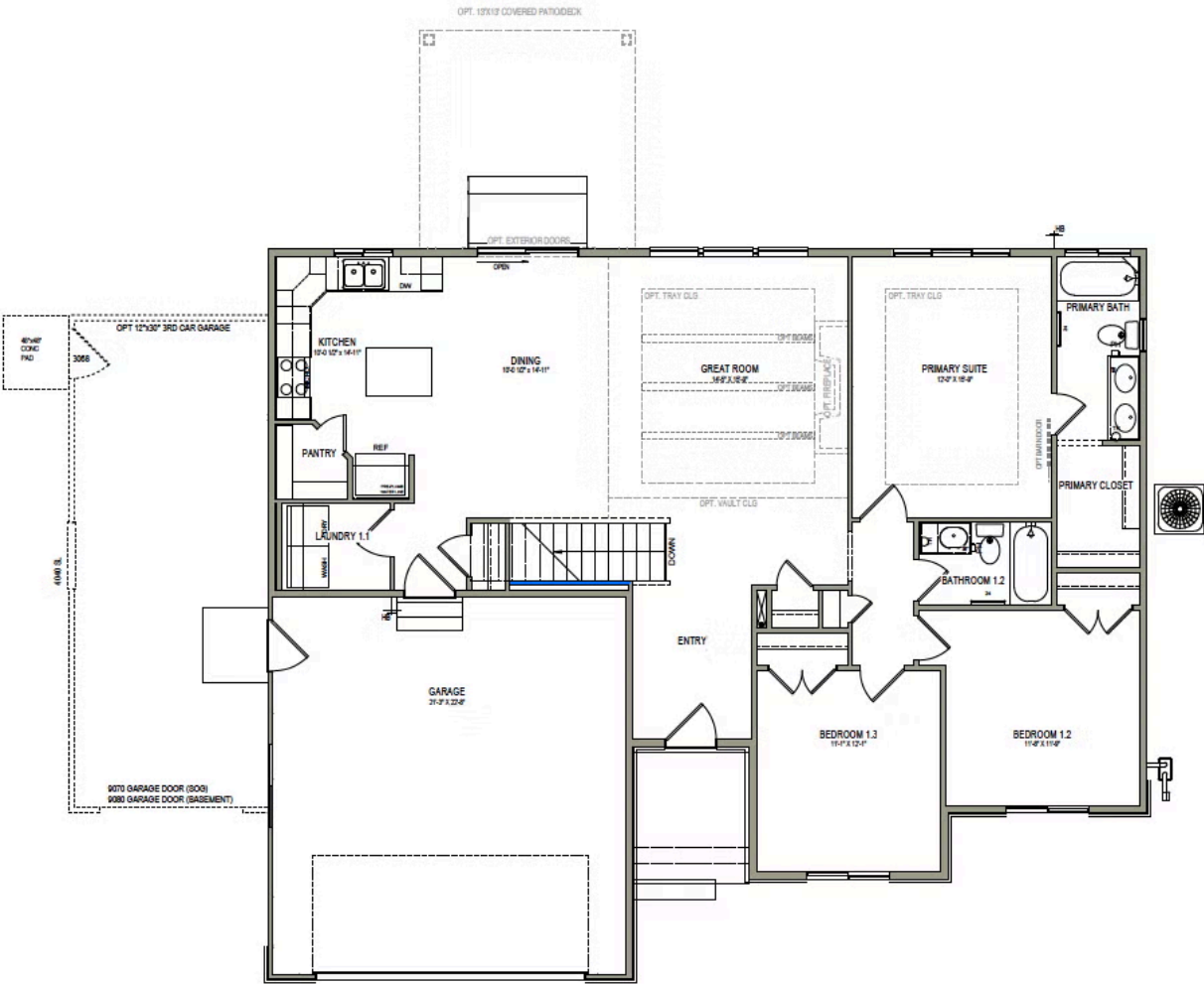
\*Visionary Homes reserves the right to change prices without notice. Approximate square footage and options shown in plan may not be included in base price.





www.visionaryhomes.com

MAIN LEVEL W/ UNFINISHED BASEMENT

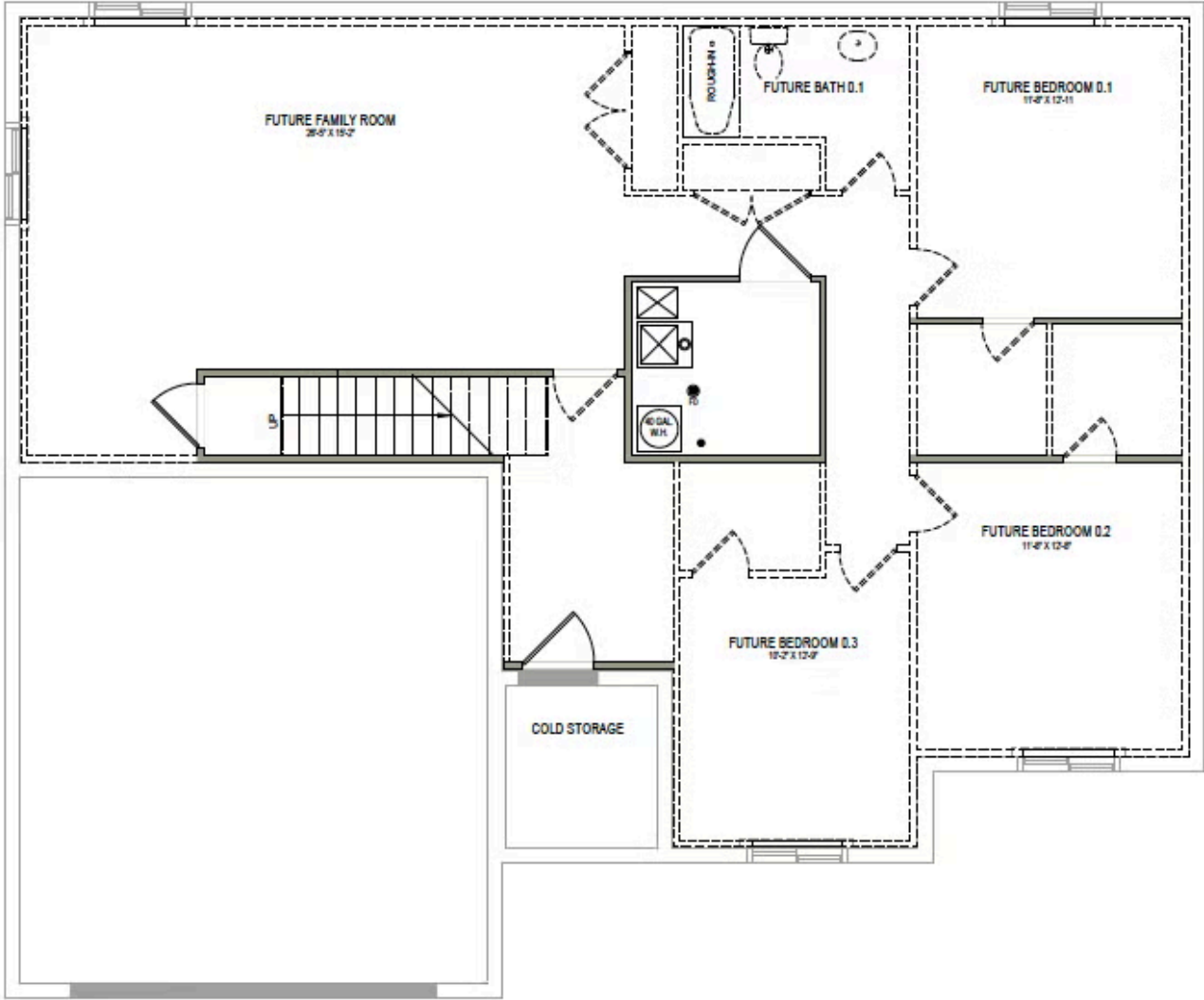


\*Visionary Homes reserves the right to change prices without notice. Approximate square footage and options shown in plan may not be included in base price.



[www.visionaryhomes.com](http://www.visionaryhomes.com)

UNFINISHED BASEMENT



\*Visionary Homes reserves the right to change prices without notice. Approximate square footage and options shown in plan may not be included in base price.