

www.visionaryhomes.com



Hawthorne

3 Elevations Available

 2,442 Total Sq.Ft.

 1,268 Finished Sq.Ft.

 2 - 5 Bedrooms

 2 - 3 Bathrooms

 2 Car Garage

The Hawthorne features an open and airy great room, kitchen, and dining area on the main floor, making it perfect for entertaining. The main floor includes a spacious owner's suite with a luxurious bath. A convenient laundry room and an additional bedroom are also located on the main floor. The Hawthorne offers a slab-on-grade foundation, or an unfinished basement, making it suitable for a variety of lifestyles. With 4 different exterior elevations to choose from, the Hawthorne is a stylish and functional Rambler that is sure to meet all of your needs.



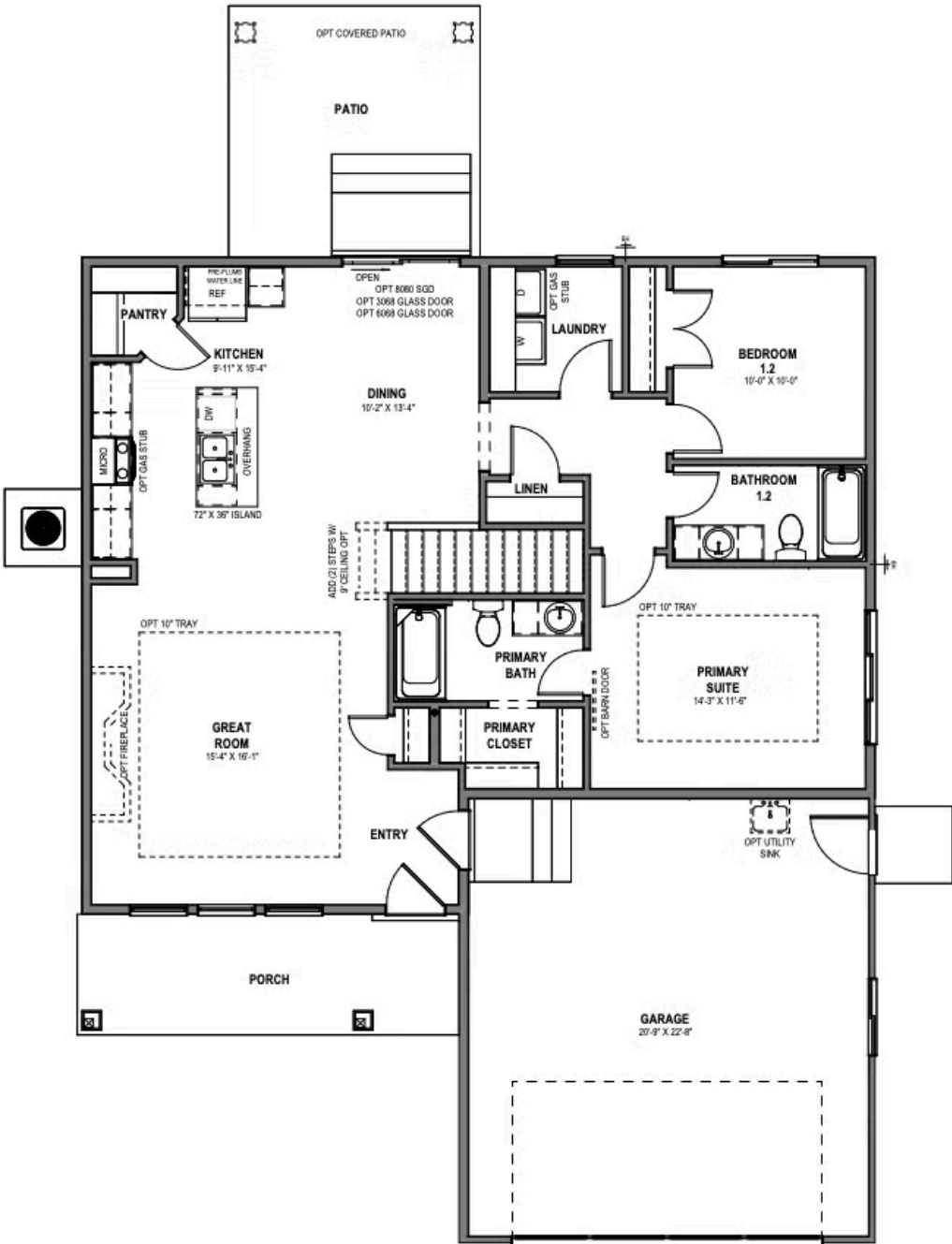
*Visionary Homes reserves the right to change prices without notice. Approximate square footage and options shown in plan may not be included in base price.

435.228.4702
visionaryhomes.com



www.visionaryhomes.com

MAIN LEVEL W/ UNFINISHED BASEMENT

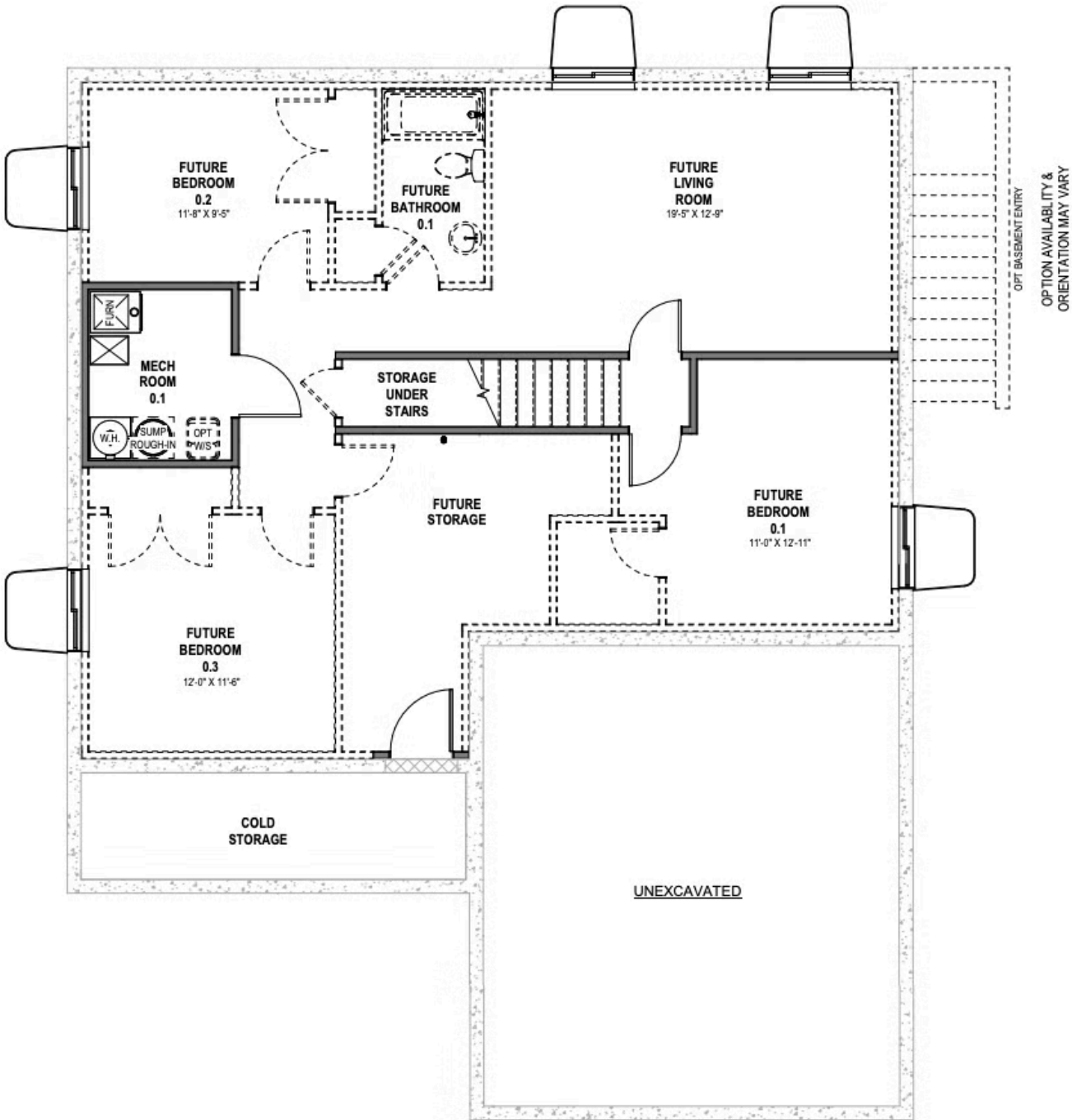


*Visionary Homes reserves the right to change prices without notice. Approximate square footage and options shown in plan may not be included in base price.



www.visionaryhomes.com

UNFINISHED BASEMENT



*Visionary Homes reserves the right to change prices without notice. Approximate square footage and options shown in plan may not be included in base price.