


www.visionaryhomes.com



Sale Price

\$419,900

 2,483 Sq.Ft.

 1,220 Sq.Ft.

 3 Bedrooms

 2 Car Garage

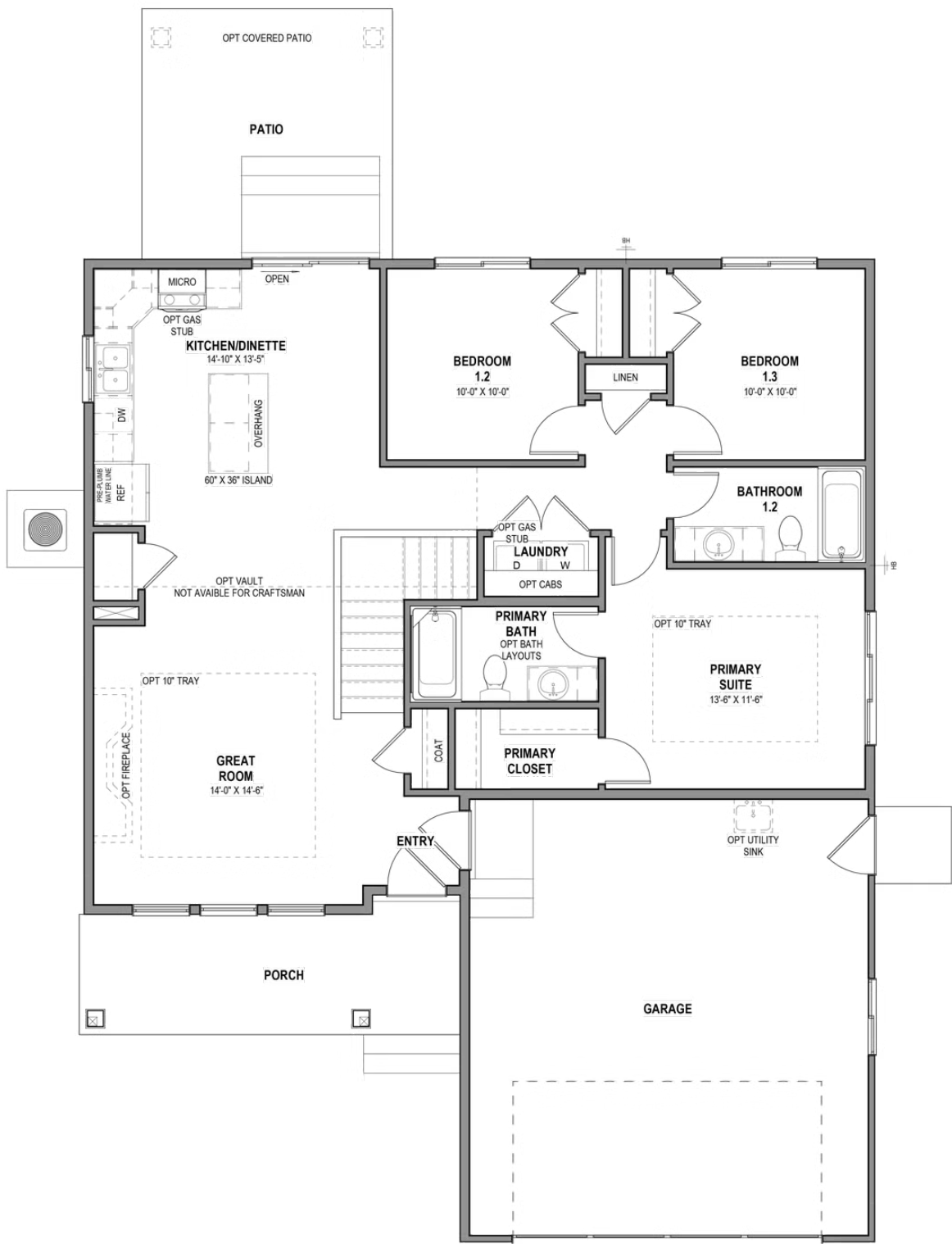
Enjoy your ideal lifestyle in the Hilldale rambler floor plan featuring 3 beds and 2 baths. With an open-concept main living space right when you enter showcasing the family room, kitchen, and dining for everything from cooking, lounging, and socializing with the family. Discover a hallway off the kitchen leading into the bedrooms, laundry, and bathroom. With the bedrooms facing the back of the home and the owner's suite on the other side for a secluded, comfy feel so you can relax and unwind, including an owner's bath and walk-in closet. Add more living space through an unfinished basement which gives room to 3 more bedrooms, a bathroom, family room, and storage space. Each bedroom features large walk-in closets for additional space for your everyday things.

HOME FEATURES:

- .13 Acre Lot
- Hilldale Floor Plan with Traditional Elevation Style
- Unfinished Basement
- 3 Bedrooms, 2 Bathrooms, 2 Car Garage
- GE Appliances (Dishwasher, Microwave, Gas Range Oven)

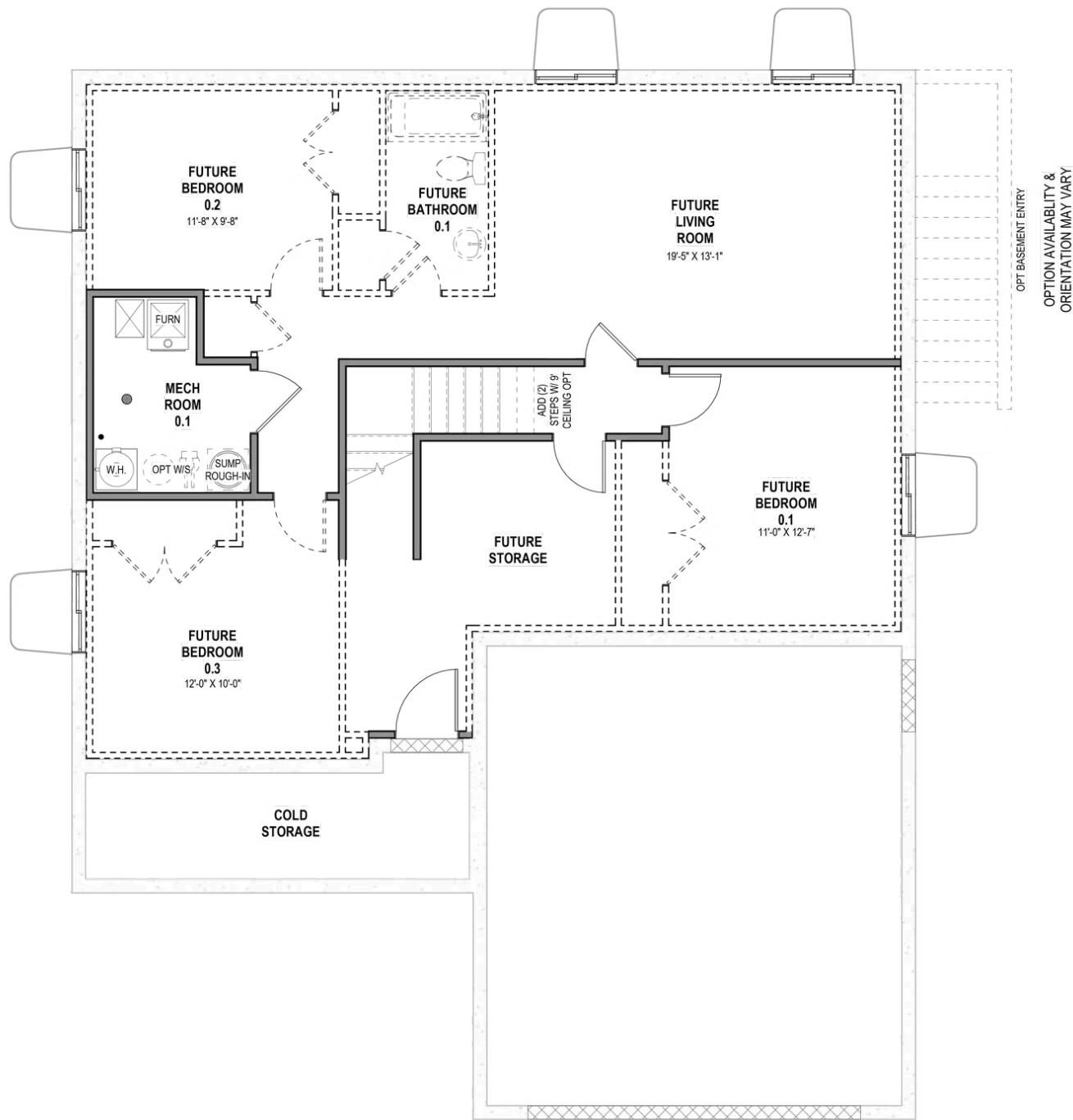
Call today for more information or to schedule a tour!

MAIN LEVEL W/ UNFINISHED BASEMENT



*Visionary Homes reserves the right to change prices without notice. Approximate square footage and options shown in plan may not be included in base price.

UNFINISHED BASEMENT



*Visionary Homes reserves the right to change prices without notice. Approximate square footage and options shown in plan may not be included in base price.