

www.visionaryhomes.com



Sale Price

\$499,990

 2,637 Sq.Ft.

 1,873 Sq.Ft.

 3 Bedrooms

 2 Car Garage

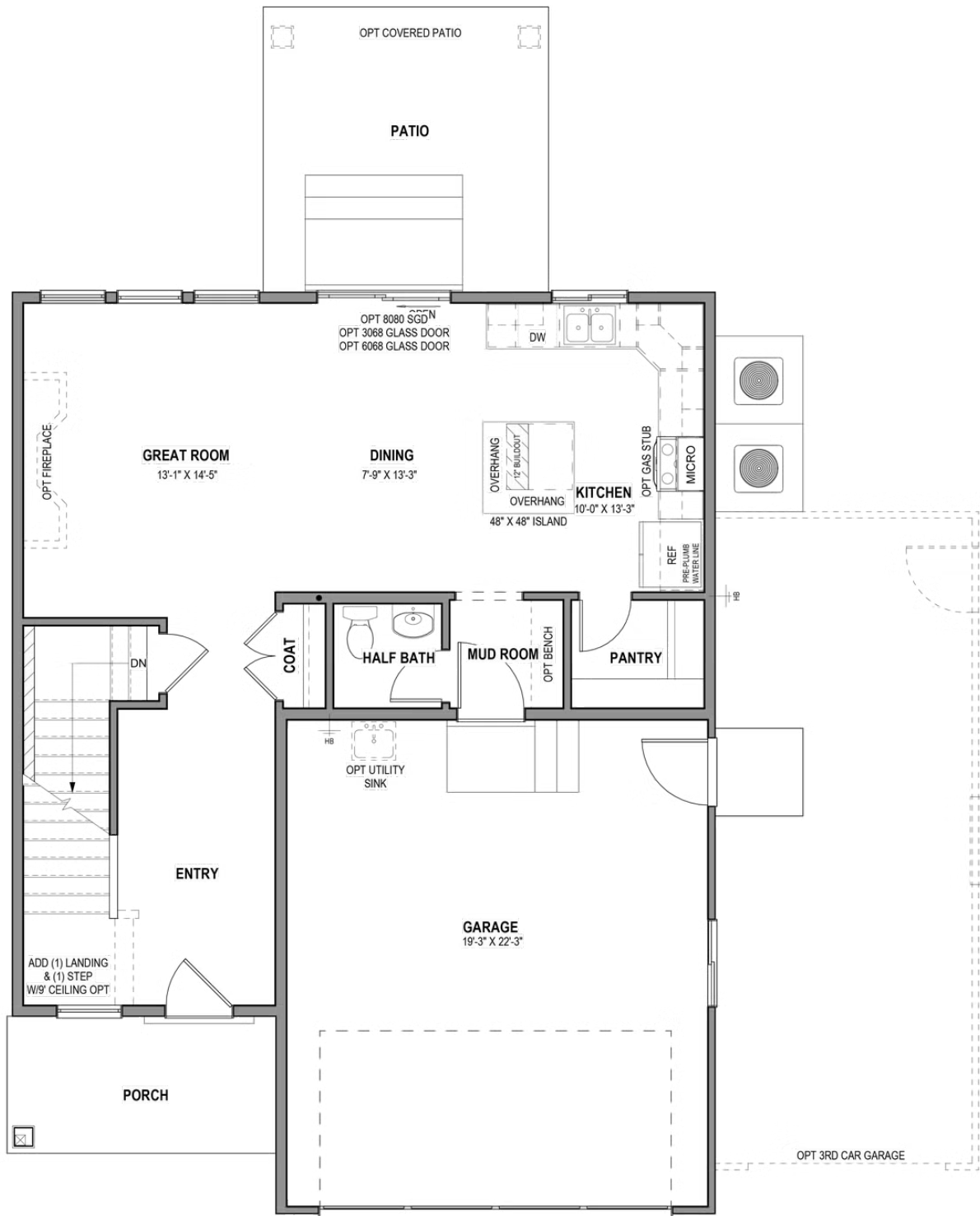
The simplicity of The Madison 2-story floor plan combine with a modern appeal for an overall stylish and functional design. Our Madison floor features 3 beds and 2.5 baths with an open-concept main living area. Featuring a large entrance welcomes you into the home. The flow from the family room into the kitchen and dining space make you feel right at home, with plenty of windows for natural light. A walk-in pantry in the kitchen provides lots of space for storing your kitchen essentials and food. Conveniently located off the garage is a mudroom and powder room. Step upstairs to discover a loft area near an open to below view of the front door, which creates an open and airy feel to the home you'll love. Feel ultimate relaxation when in your owner's suite with a walk-in closet and owner's bath. With two bedrooms, one with a walk-in closet, also upstairs. An unfinished basement creates an additional bedroom with a spacious walk-in closet and bathroom, along with a family room.

HOME FEATURES:

- .14 Acre Lot
- Madison Floor Plan with Craftsman Elevation
- 3 Bedrooms, 2.5 Bathrooms, 2 Car Garage
- Timeless Black and White Exterior Colors
- Unfinished Basement
- GE Appliances in Kitchen (Dishwasher, Oven, Microwave)
- Fireplace in Living Room
- 9' Ceiling on Main Floor

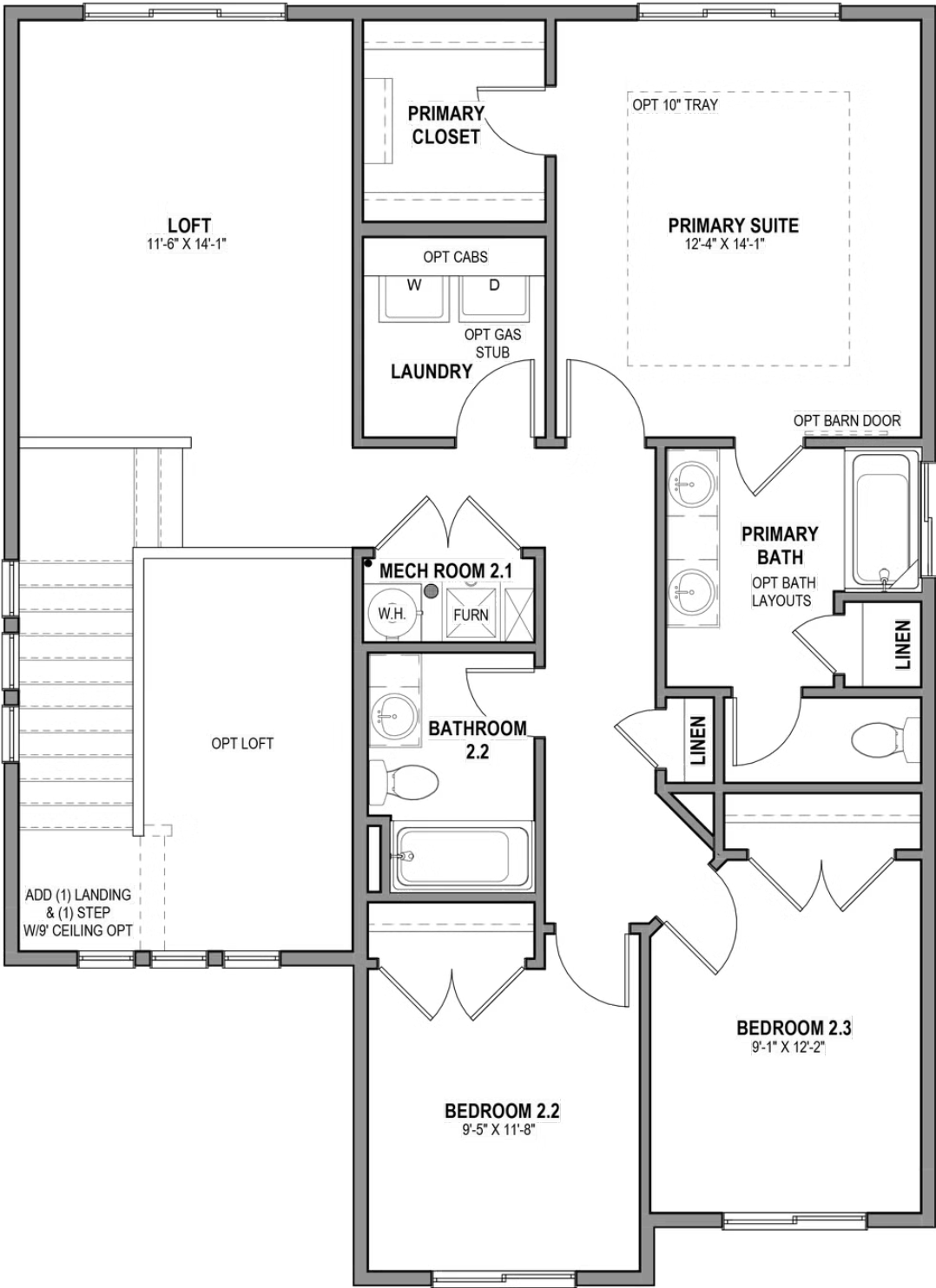
For more information or to make an appointment, please call 435-938-5698. Stop by our beautiful, model home at 574 North 600 West, Smithfield, UT 8433.

MAIN LEVEL W/ UNFINISHED BASEMENT



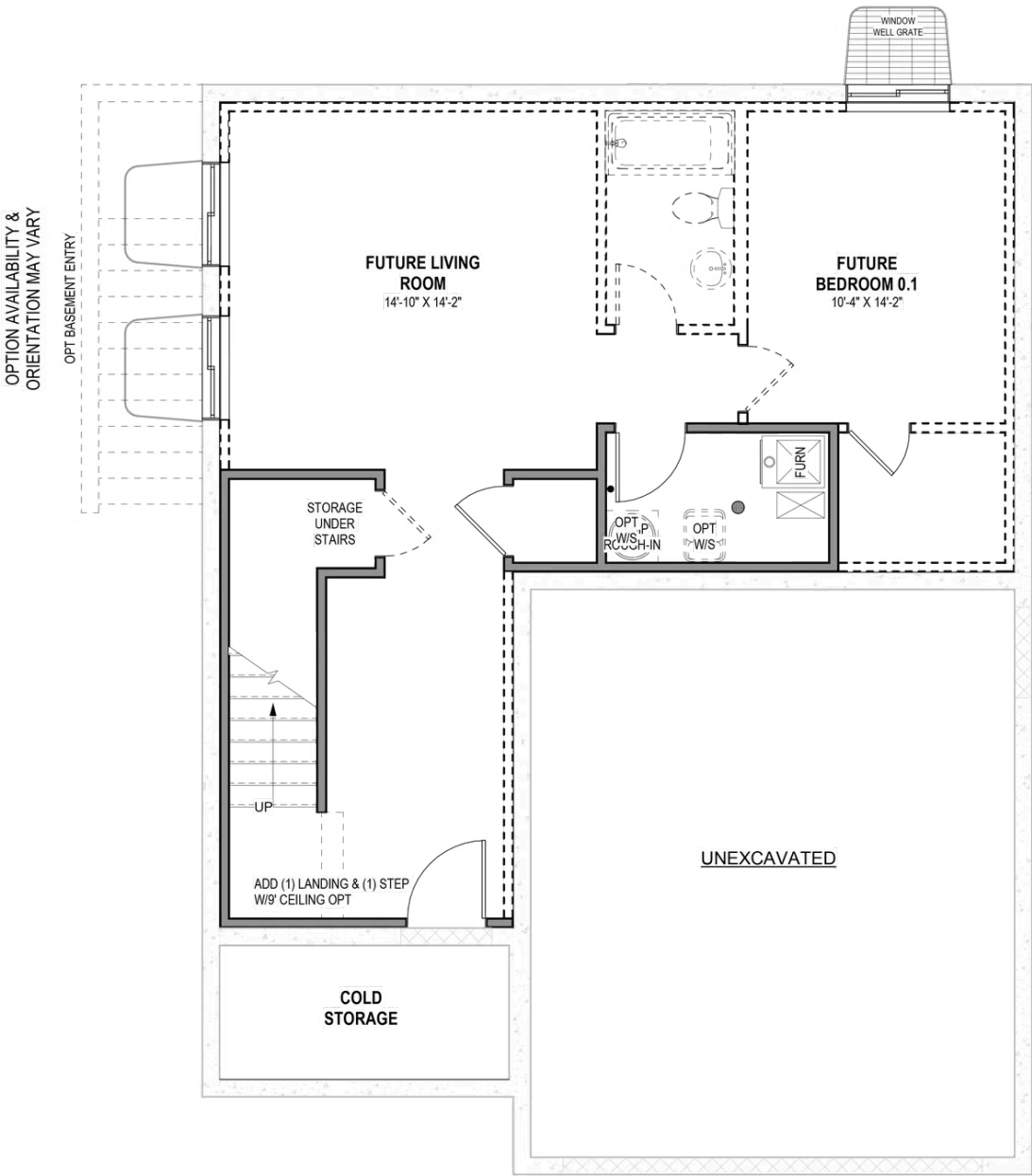
*Visionary Homes reserves the right to change prices without notice. Approximate square footage and options shown in plan may not be included in base price.

UPPER LEVEL



*Visionary Homes reserves the right to change prices without notice. Approximate square footage and options shown in plan may not be included in base price.

UNFINISHED BASEMENT



*Visionary Homes reserves the right to change prices without notice. Approximate square footage and options shown in plan may not be included in base price.