

www.visionaryhomes.com



Sale Price

\$474,990

 2,402 Sq.Ft.

 1,268 Sq.Ft.

 2 Bedrooms

 2 Car Garage

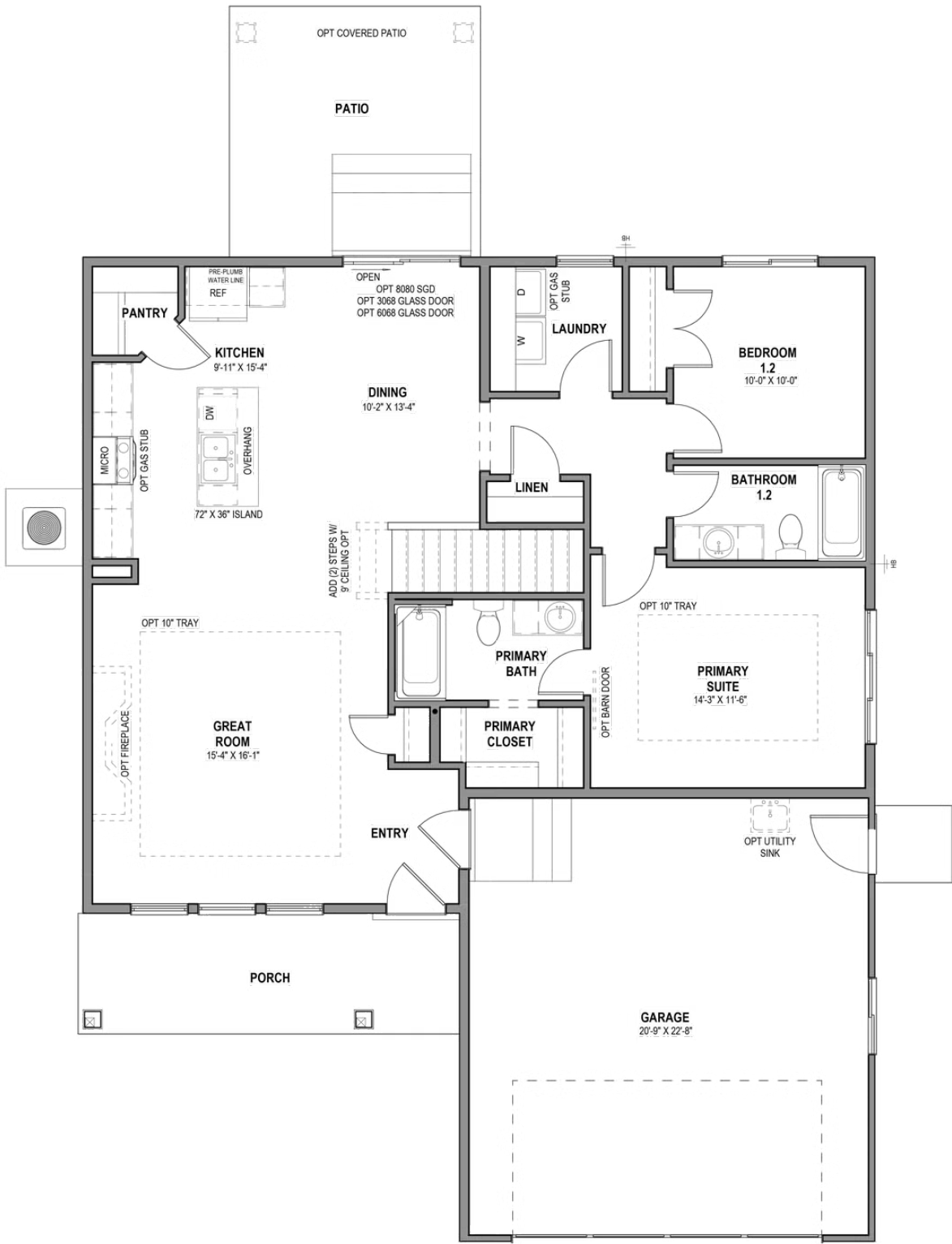
The Hawthorne features an open and airy great room, kitchen, and dining area on the main floor, making it perfect for entertaining. The main floor includes a spacious owner's suite with a luxurious bath. A convenient laundry room and an additional bedroom are also located on the main floor. This home comes with an unfinished basement which once completed will give you 3 additional bedrooms and 1 bathroom.

HOME FEATURES:

- .12 Acre Lot
- Fully Landscaped Yard
- Hawthorne Floor Plan with Farmhouse Elevation
- Unfinished Basement
- 2 Bedrooms, 2 Bathrooms, 2 Car Garage
- GE Appliances in Kitchen (Oven, Microwave, Dishwasher)
- Quartz Countertops
- Durable Laminate Flooring
- Plush Carpet in Bedrooms
- Fireplace in Living Room

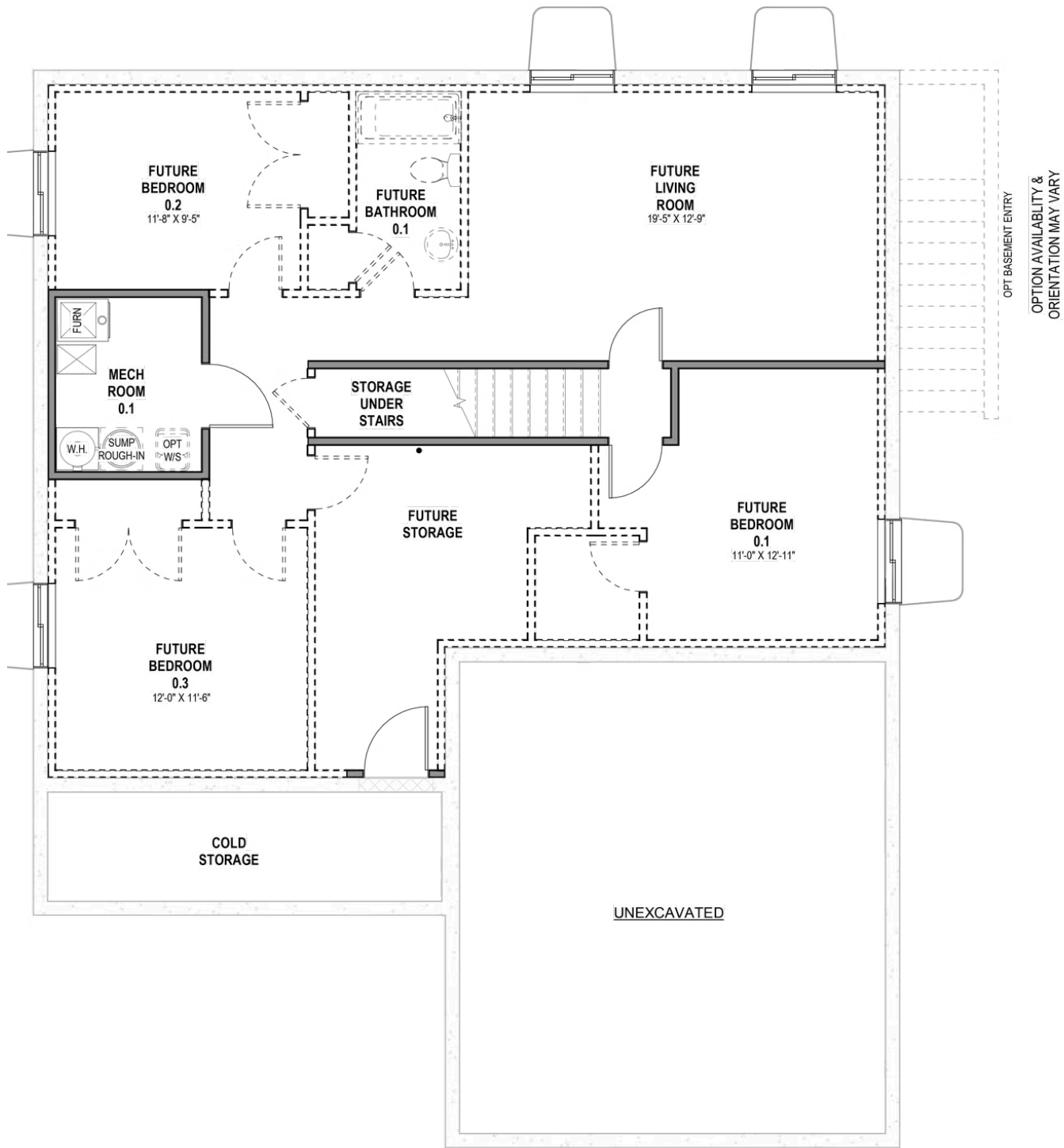
Check out the gallery for photos of this home! Schedule a private tour of this home or call for more information.

MAIN LEVEL W/ UNFINISHED BASEMENT



*Visionary Homes reserves the right to change prices without notice. Approximate square footage and options shown in plan may not be included in base price.

UNFINISHED BASEMENT



*Visionary Homes reserves the right to change prices without notice. Approximate square footage and options shown in plan may not be included in base price.