

[www.visionaryhomes.com](http://www.visionaryhomes.com)

## Hilldale

1 Elevations Available

 2,483 Total Sq.Ft.

 1,220 Finished Sq.Ft.

 3 - 6 Bedrooms

 2 - 3 Bathrooms

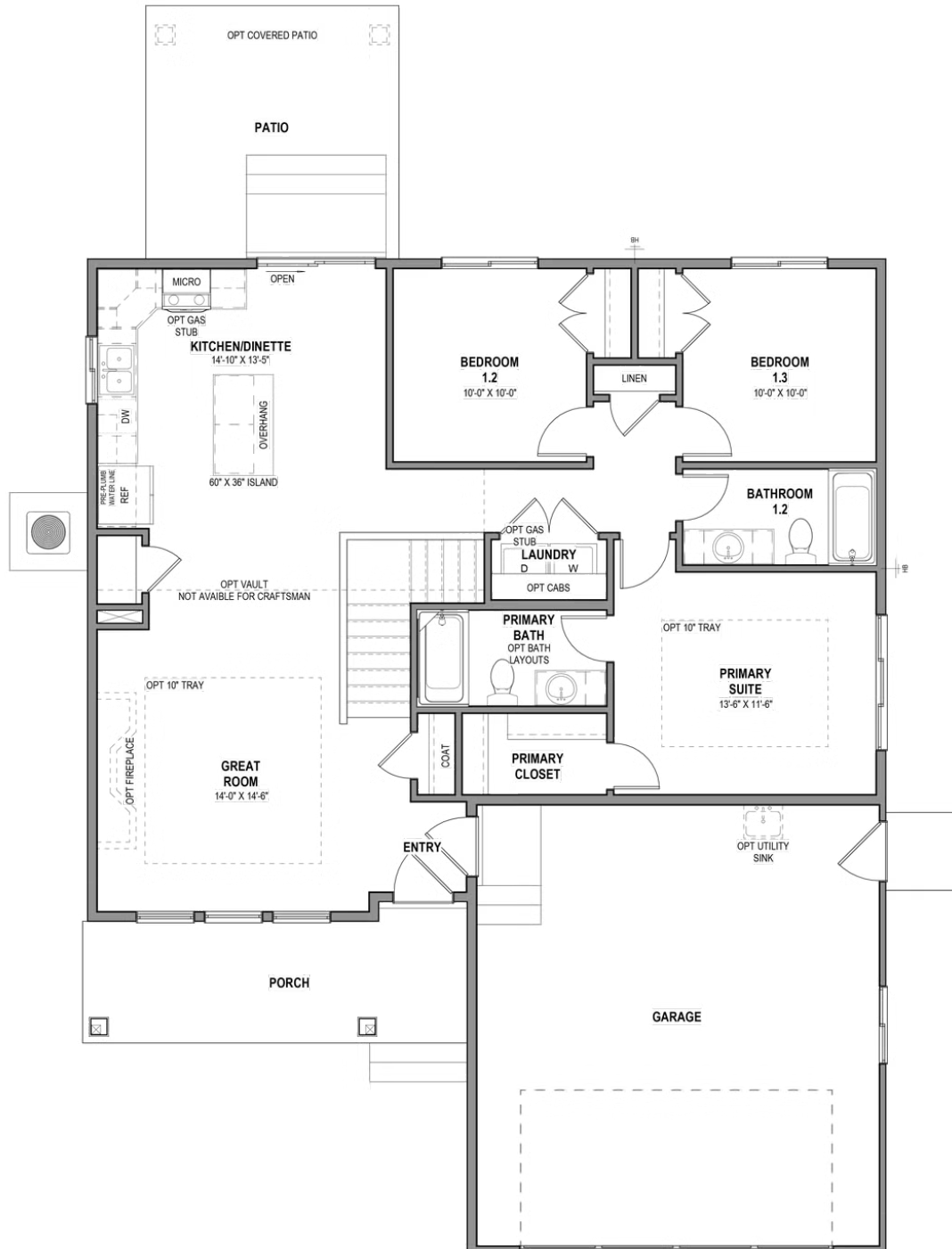
 2 - 3 Car Garage

Enjoy your ideal lifestyle in the Hilldale rambler floor plan featuring 3 beds and 2 baths. With an open-concept main living space right when you enter showcasing the family room, kitchen, and dining for everything from cooking, lounging, and socializing with the family. Discover a hallway off the kitchen leading into the bedrooms, laundry, and bathroom. With the bedrooms facing the back of the home and the owner's suite on the other side for a secluded, comfy feel so you can relax and unwind, including an owner's bath and walk-in closet. Add more living space through an optional finished basement which gives room to 3 more bedrooms, a bathroom, family room, and storage space. Each bedroom features large walk-in closets for additional space for your everyday things.





MAIN LEVEL W/ UNFINISHED BASEMENT



UNFINISHED BASEMENT

