

[www.visionaryhomes.com](http://www.visionaryhomes.com)



**Sale Price**

**\$374,990**

 2,353 Sq.Ft.

 3 Bedrooms

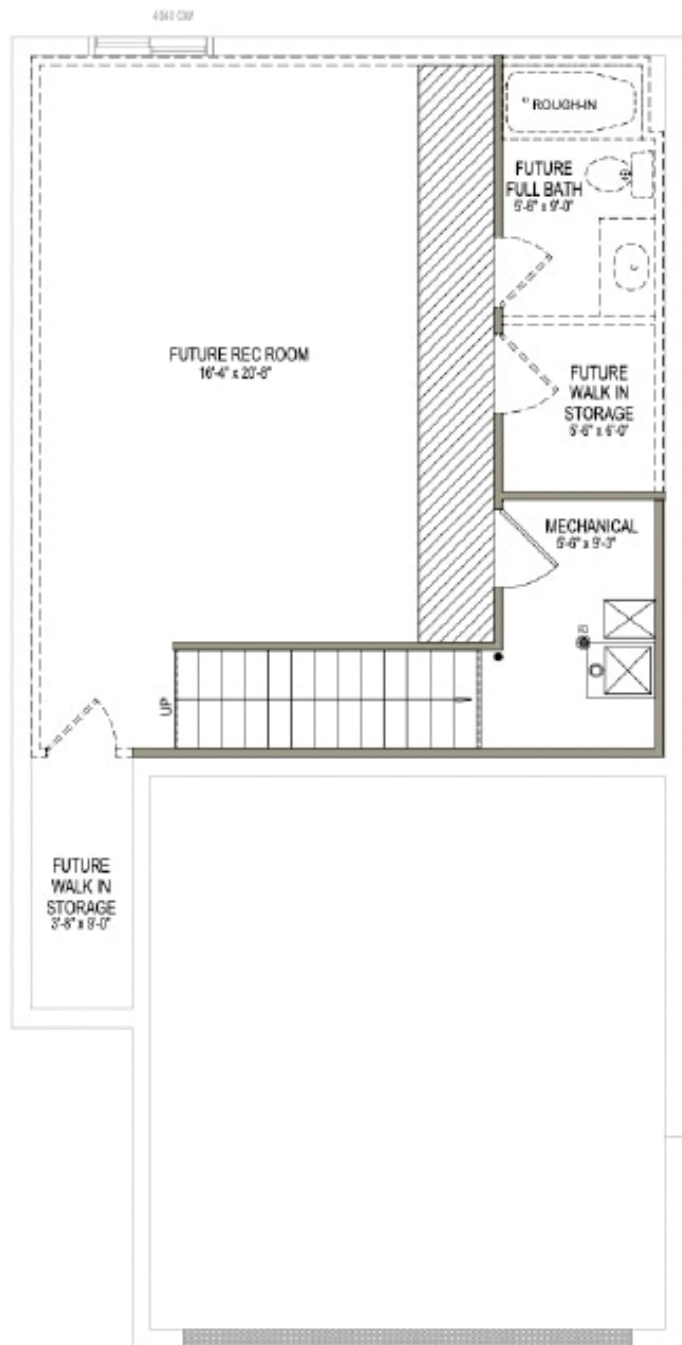
 2 Car Garage

**Amazing 3 bed, 2.5 bathroom in quiet, Smithfield with an unfinished basement!**

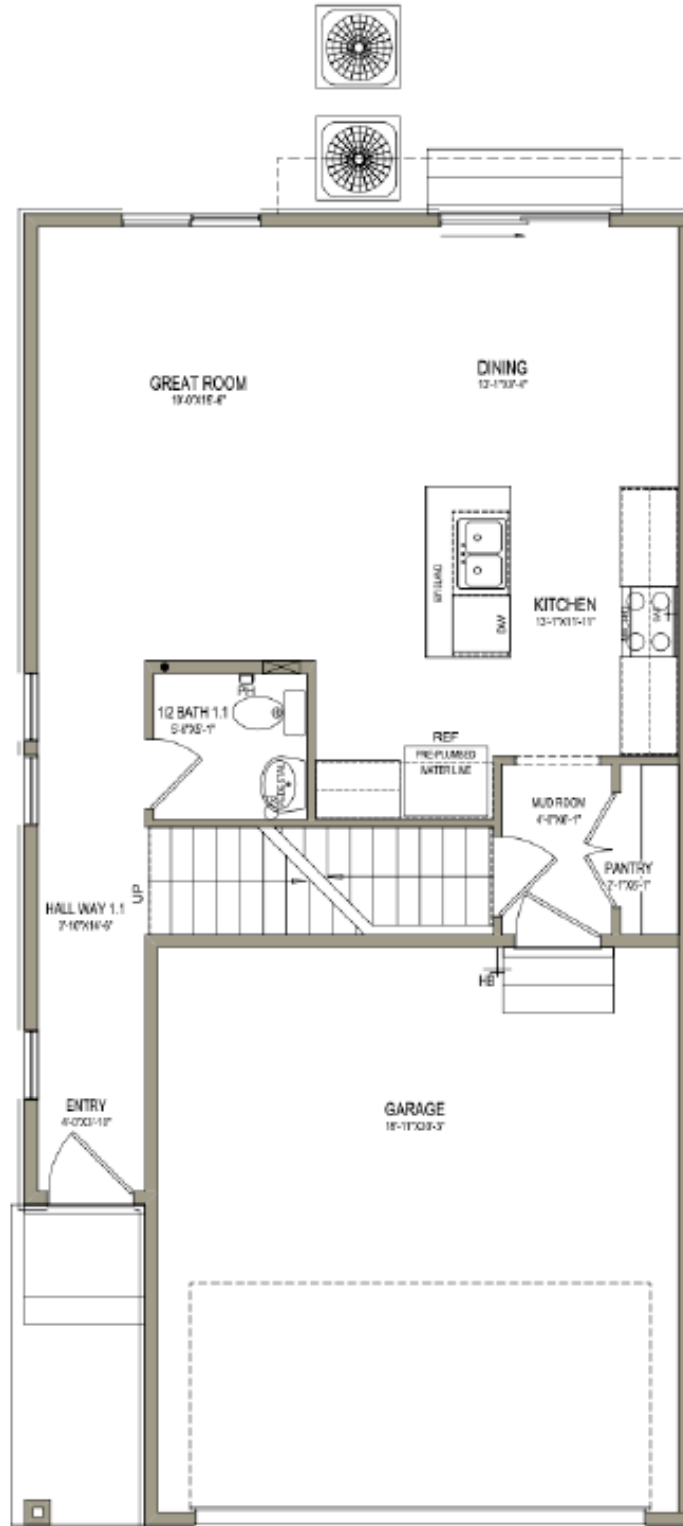
Discover the spacious main living space the Huckleberry exterior townhome unit has to offer, with a great room and kitchen. The kitchen features a kitchen island for your cooking needs and a large pantry. Upstairs you'll find a roomy loft for turning into anything from a lounge space to work area. Enter the primary suite to find an ensuite bath and a walk-in closet that provides plenty of space for your clothing to accessories. This townhome showcases 3 bedrooms, 2.5 bathrooms, and a 2-car garage and an unfinished basement.



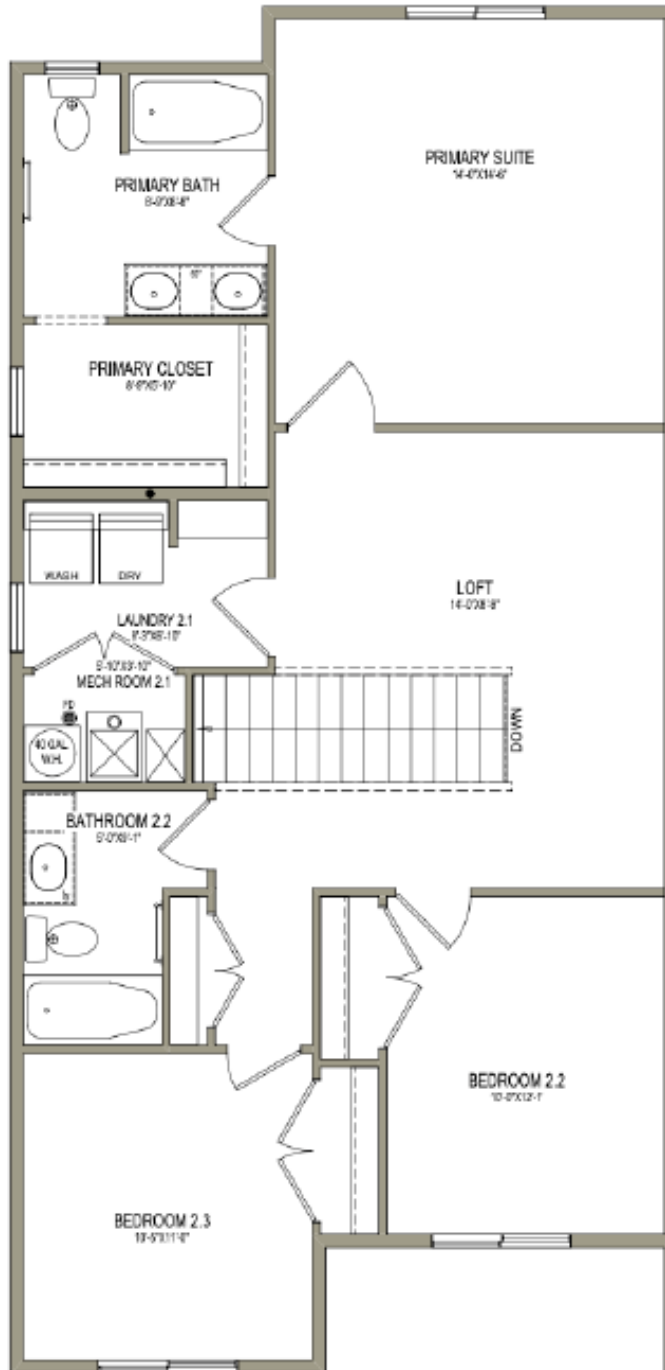
## UNFINISHED BASEMENT



## MAIN LEVEL



UPPER LEVEL



\*Visionary Homes reserves the right to change prices without notice. Approximate square footage and options shown in plan may not be included in base price.