


www.visionaryhomes.com



Sale Price

\$319,990

 1,764 Sq.Ft.

 3 Bedrooms

 2 Car Garage

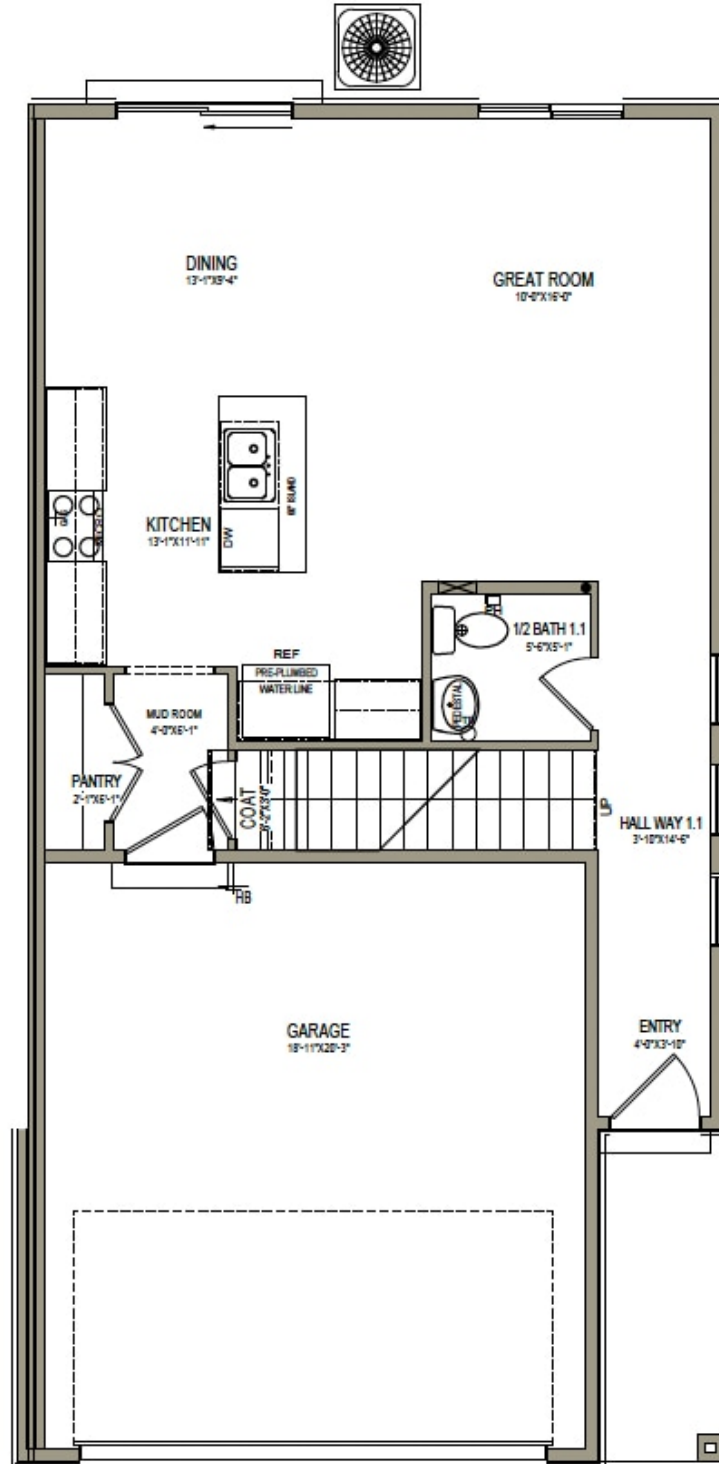
Discover the spacious main living space the Huckleberry exterior townhome unit has to offer, with a great room and kitchen. The kitchen features a kitchen island for your cooking needs and a large pantry. Upstairs you'll find a roomy loft for turning into anything from a lounge space to work area. Enter the primary suite to find an ensuite bath and a walk-in closet that provides plenty of space for your clothing to accessories. This slab-on-grade townhome showcases 3 bedrooms, 2.5 bathrooms, and a 2-car garage.



*Visionary Homes reserves the right to change prices without notice.
Approximate square footage and options shown in plan may not be included in base price.

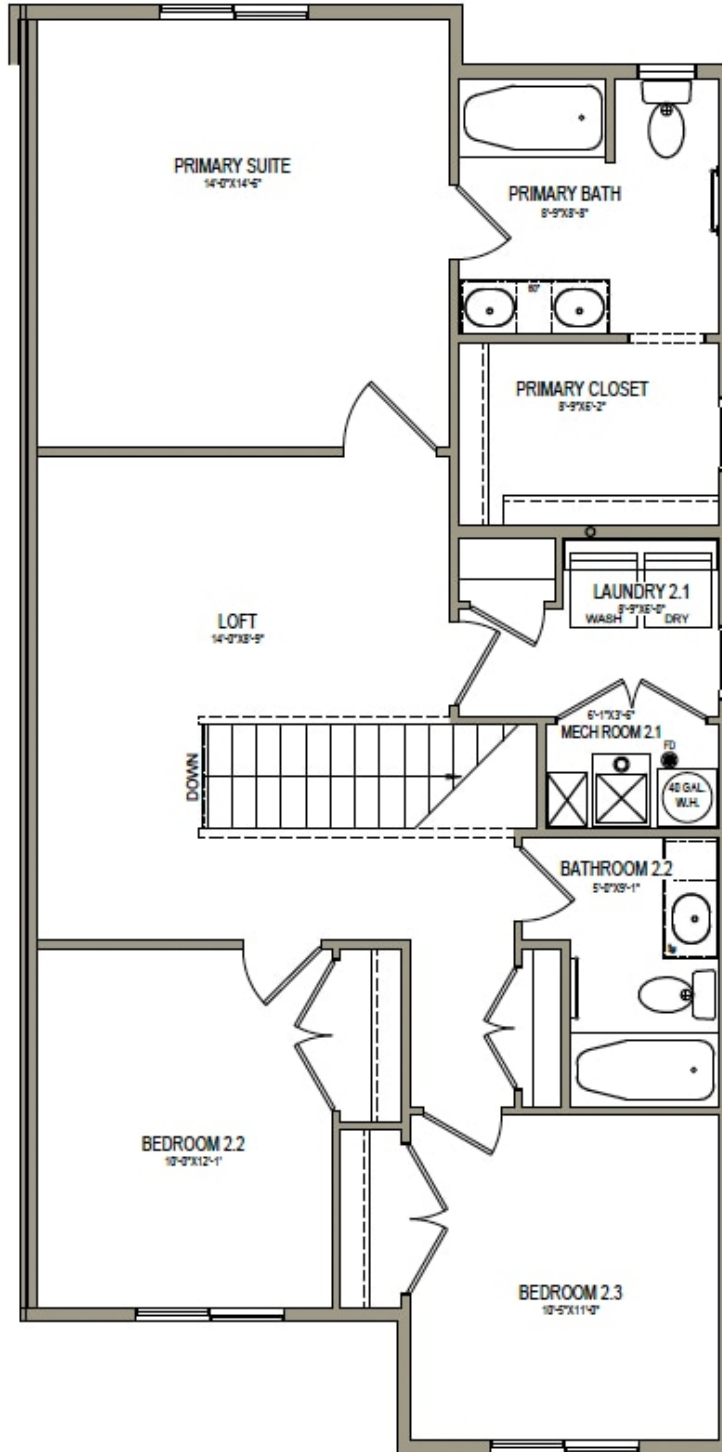
435.228.4702
[visionaryhomes.com](http://www.visionaryhomes.com)

MAIN LEVEL - SLAB ON GRADE



*Visionary Homes reserves the right to change prices without notice. Approximate square footage and options shown in plan may not be included in base price.

UPPER LEVEL



*Visionary Homes reserves the right to change prices without notice. Approximate square footage and options shown in plan may not be included in base price.