

www.visionaryhomes.com
**Sale Price****\$349,990**
 1,764 Sq.Ft.

 3 Bedrooms

 2 Car Garage

Discover the spacious main living space the Huckleberry exterior townhome unit has to offer, with a great room and kitchen. The kitchen features a kitchen island for your cooking needs and a large pantry. Upstairs you'll find a roomy loft for turning into anything from a lounge space to work area. Enter the owner's suite to find an owner's bath and a walk-in closet that provides plenty of space for your clothing to accessories. This slab-on-grade townhome showcases 3 bedrooms, 2.5 bathrooms, and a 2-car garage.



VISIONARY SALE EVENT

Village at Fox Meadows

**TOWNHOME
SPECIAL**

Limited Time Offer!

AVAILABLE ON QUICK MOVE-INS
UNTIL MAY 31, 2024

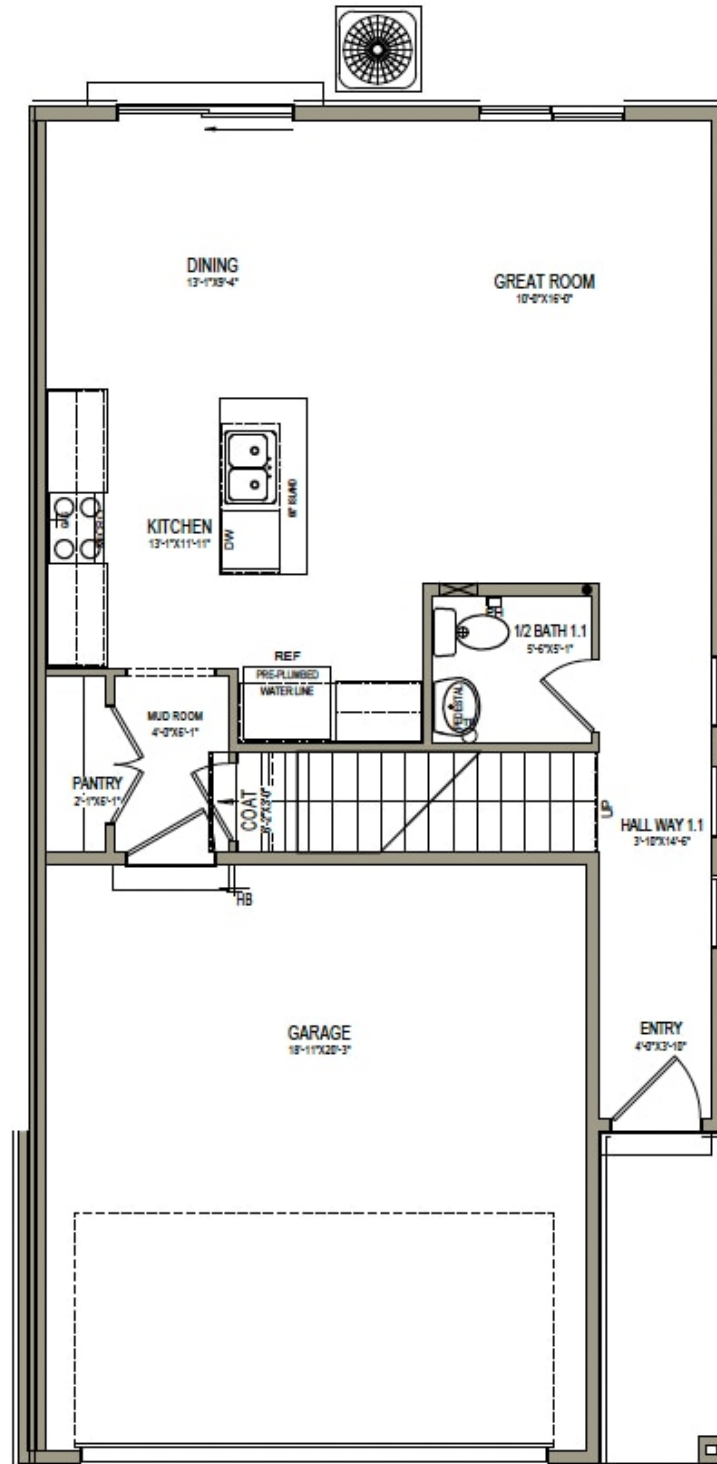
6.25%

Fixed Rate

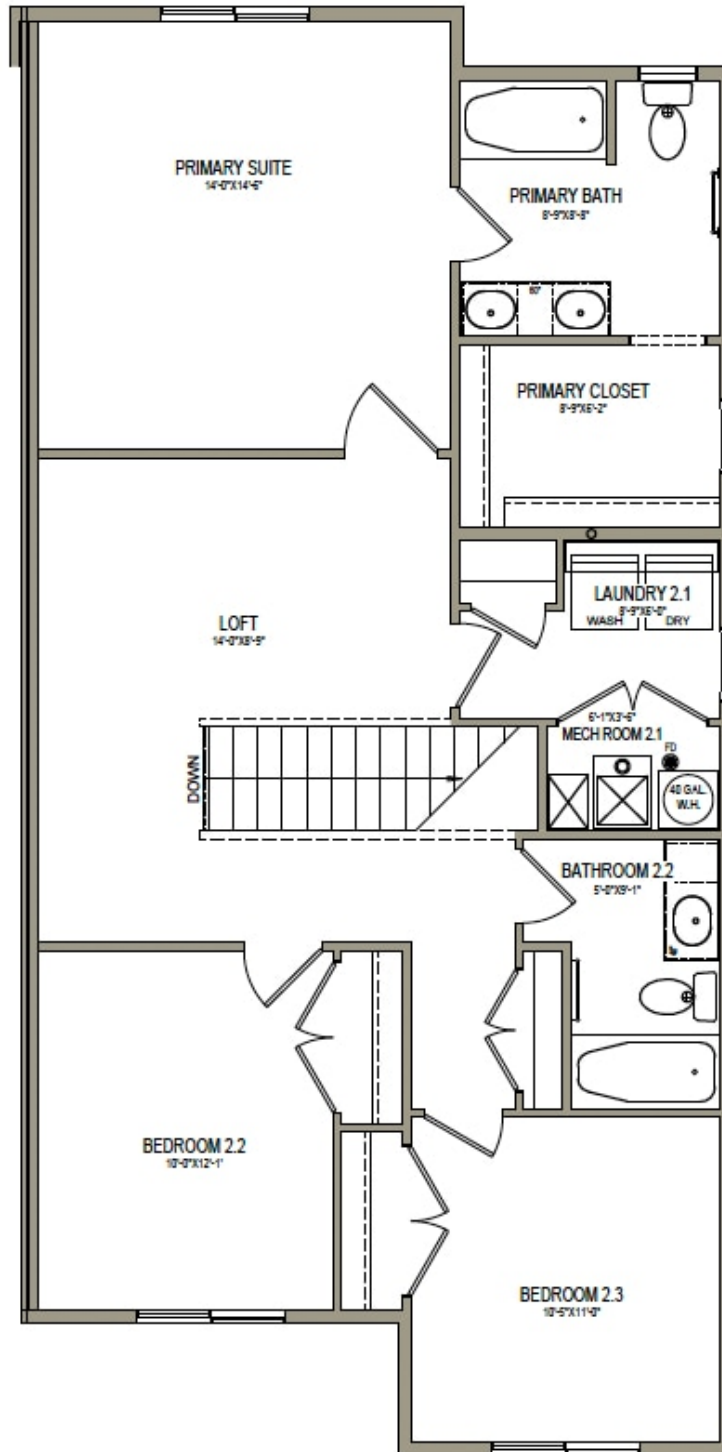
*Visionary Homes reserves the right to change prices without notice.
Approximate square footage and options shown in plan may not be included in base price.

435.228.4702
visionaryhomes.com

MAIN LEVEL - SLAB ON GRADE



UPPER LEVEL



MAIN LEVEL

