


www.visionaryhomes.com



Sale Price

\$383,990

 2,330 Sq.Ft.

 3 Bedrooms

 2 Car Garage

Discover the spacious main living space the Huckleberry exterior townhome unit has to offer, with a great room and kitchen. The kitchen features a kitchen island for your cooking needs and a large pantry. Upstairs you'll find a roomy loft for turning into anything from a lounge space to work area. Enter the owner's suite to find an owner's bath and a walk-in closet that provides plenty of space for your clothing to accessories. This townhome showcases 3 bedrooms, 2.5 bathrooms, and a 2-car garage. [This townhome has an unfinished basement!](#)

HOME FEATURES:

- 3 bedrooms, 2.5 bathrooms, 2 car garage
- Unfinished basement
- Large pantry in Kitchen
- Concrete backyard patio
- Access to community amenities like parks, trails, poolhouse, pool, pickleball courts and more!

Call 435-228-4702 for more information or to book an appointment with one of our New Home Specialists. Stop by our Village at Fox Meadows Model Townhome at 607 W 550 N Unit #506, Smithfield, UT 84335.

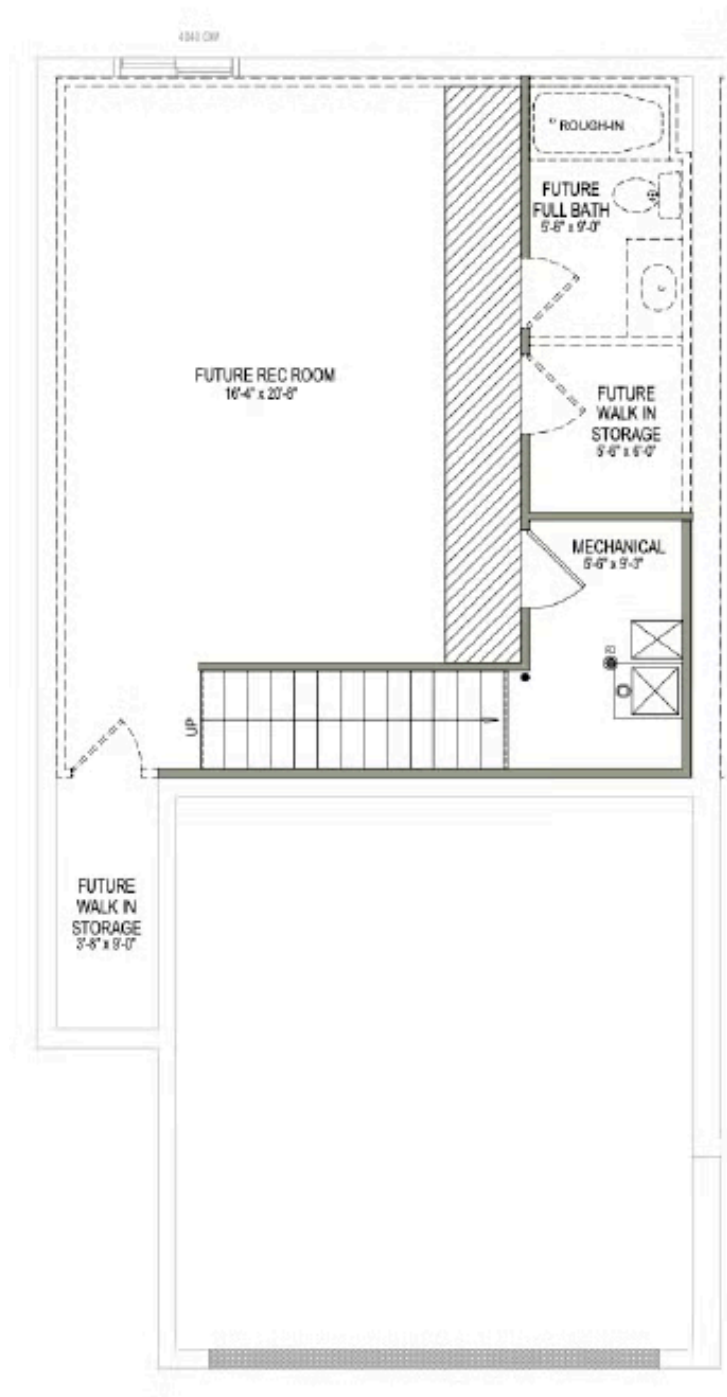
[Click here to learn more about Tour On Your Time!](#)



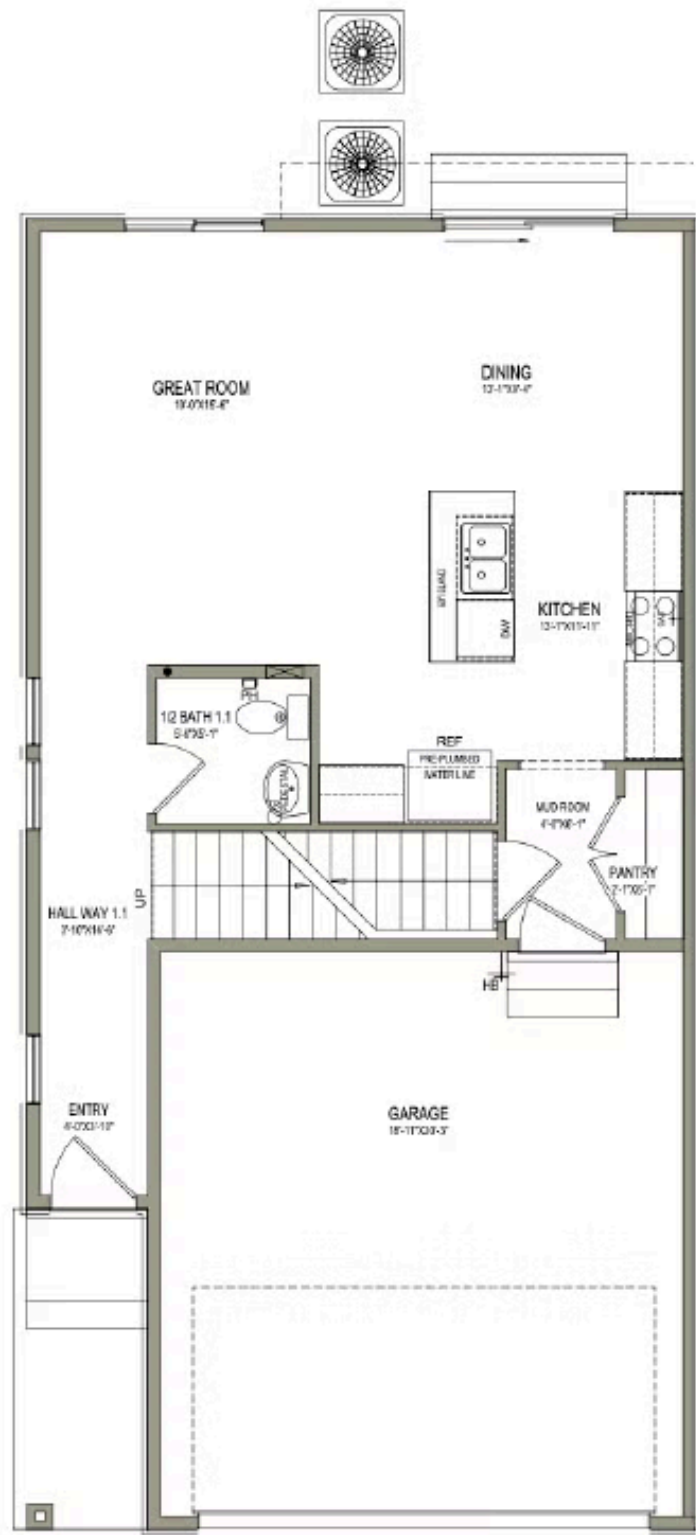
*Visionary Homes reserves the right to change prices without notice. Approximate square footage and options shown in plan may not be included in base price.

435.228.4702
visionaryhomes.com

UNFINISHED BASEMENT



MAIN LEVEL



*Visionary Homes reserves the right to change prices without notice. Approximate square footage and options shown in plan may not be included in base price.

UPPER LEVEL

