

[www.visionaryhomes.com](http://www.visionaryhomes.com)



**Sale Price**  
**\$383,990**

 1,755 Sq.Ft.

 3 Bedrooms

 2 Car Garage

Discover the spacious main living space the Huckleberry townhome unit has to offer, with a great room and kitchen. The kitchen features a kitchen island for your cooking needs and a large pantry. Upstairs you'll find a roomy loft for turning into anything from a lounge space to work area. Enter the owner's suite to find an owner's bath and a walk-in closet that provides plenty of space for your clothing to accessories. This slab-on-grade townhome showcases 3 bedrooms, 2.5 bathrooms, and a 2-car garage.

#### HOME FEATURES:

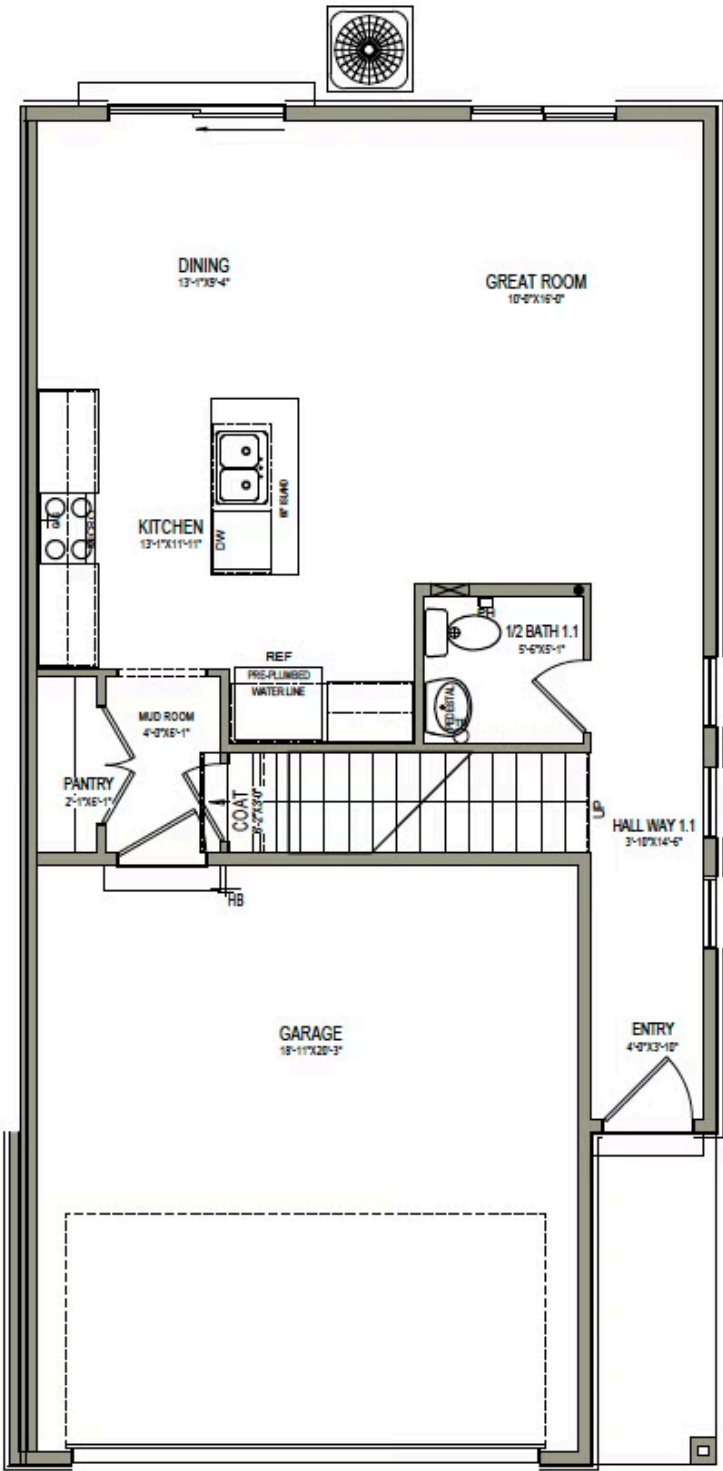
- 3 bedrooms, 2.5 bathrooms, 2 car garage
- White cabinets & quartz countertops in Kitchen & Bathrooms
- Large pantry in Kitchen
- Concrete backyard patio
- Access to community amenities like parks, trails, pool house, pool, pickleball courts and more!

Call 435-228-4702 for more information or to book an appointment with one of our New Home Specialists. Stop by our Village at Fox Meadows Model Townhome at 607 W 550 N Unit #506, Smithfield, UT 84335.

[Click here to learn more about Tour On Your Time!](#)

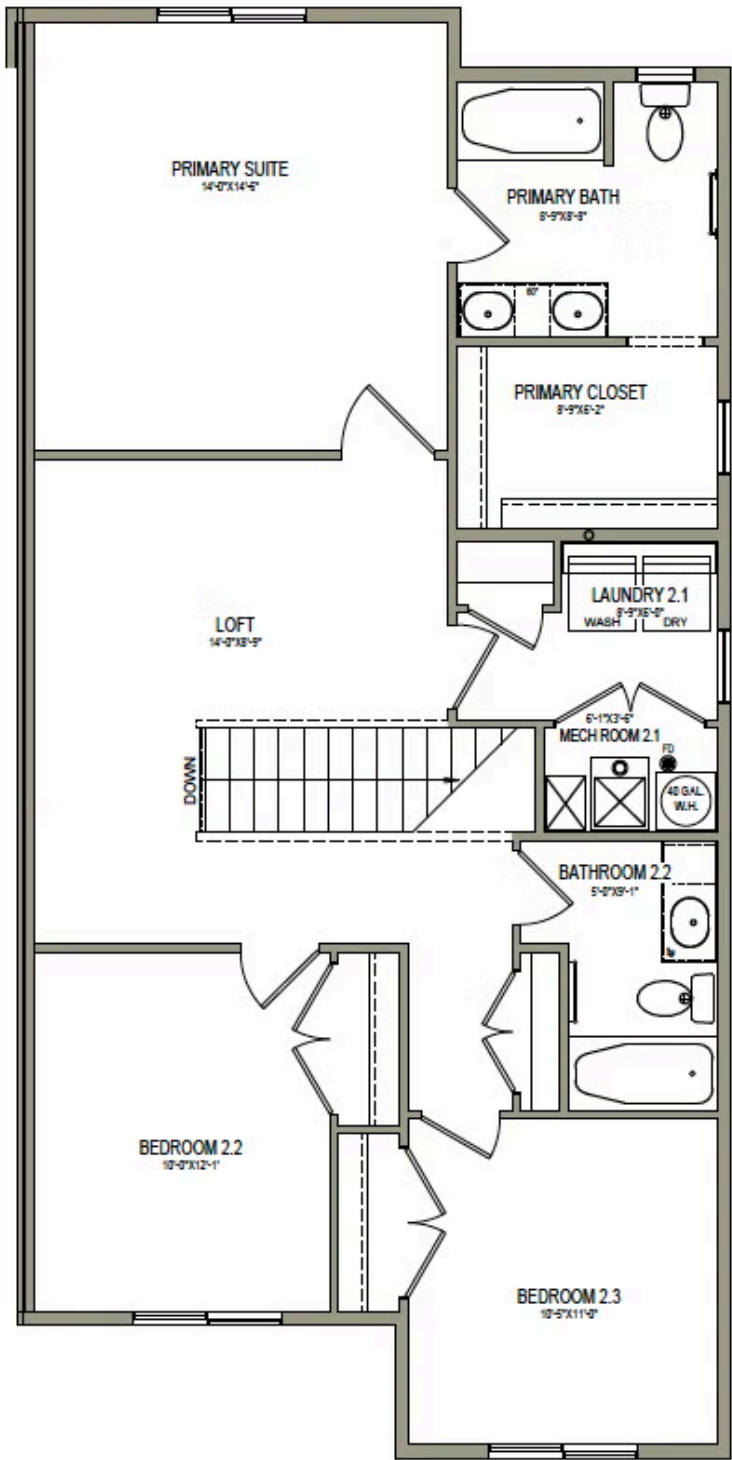


MAIN LEVEL - SLAB ON GRADE



\*Visionary Homes reserves the right to change prices without notice. Approximate square footage and options shown in plan may not be included in base price.

UPPER LEVEL



\*Visionary Homes reserves the right to change prices without notice. Approximate square footage and options shown in plan may not be included in base price.