

www.visionaryhomes.com



Sale Price

\$None

 1,764 Sq.Ft.

 3 Bedrooms

 2 Car Garage

607 W 550 N Unit #506, Smithfield, UT 84335

Discover the spacious main living space the Huckleberry exterior townhome unit has to offer, with a great room and kitchen. The kitchen features a kitchen island for your cooking needs and a large pantry. Upstairs you'll find a roomy loft for turning into anything from a lounge space to work area. Enter the owner's suite to find an owner's bath and a walk-in closet that provides plenty of space for your clothing to accessories. This slab-on-grade townhome showcases 3 bedrooms, 2.5 bathrooms, and a 2-car garage.

Call today to schedule a private tour 435-557-3086!

Living in Smithfield, UT is the ideal spot for those seeking small-town living without sacrificing proximity to local grocery stores, parks, schools, and close access to Logan City. In addition, The Village at Fox Meadows Townhome amenities include a community pool and clubhouse, perfect for gathering with friends, family and neighbors to make lifelong memories.

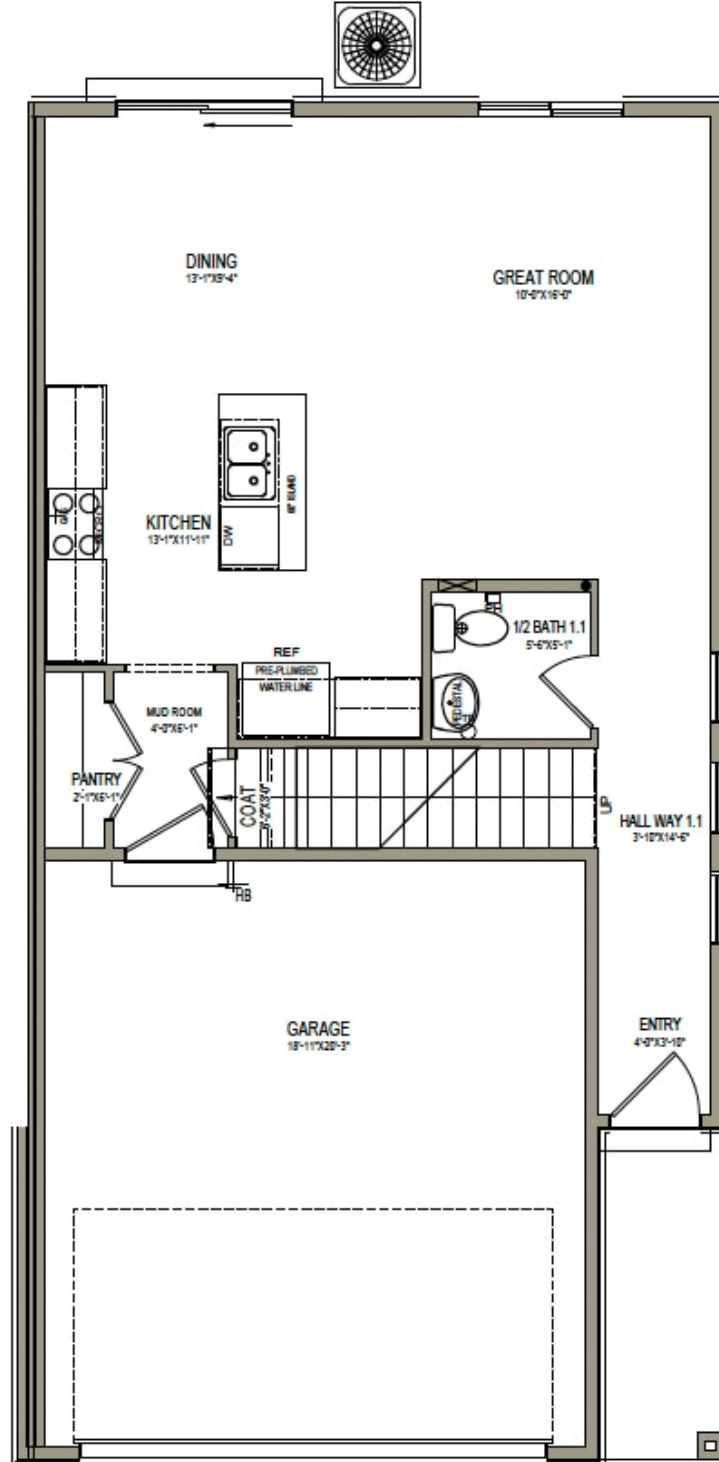


The Village at Fox Meadows
Townhome Model

*Visionary Homes reserves the right to change prices without notice.
Approximate square footage and options shown in plan may not be included in base price.

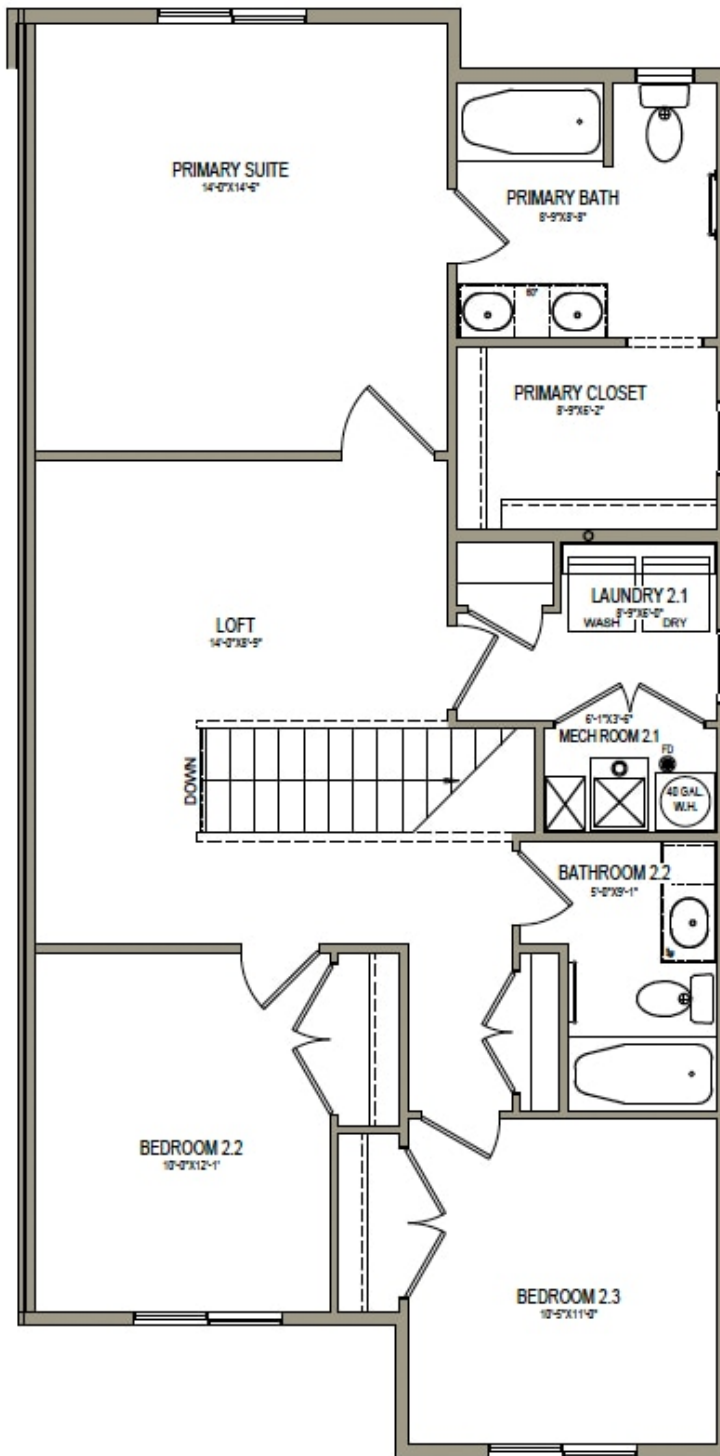
435.228.4702
[visionaryhomes.com](http://www.visionaryhomes.com)

MAIN LEVEL - SLAB ON GRADE



*Visionary Homes reserves the right to change prices without notice. Approximate square footage and options shown in plan may not be included in base price.

UPPER LEVEL



*Visionary Homes reserves the right to change prices without notice. Approximate square footage and options shown in plan may not be included in base price.