

www.visionaryhomes.com



Odyssey

2 Elevations Available

 1,530 Total Sq.Ft.

 3 - 4 Bedrooms

 2.5 - 3.5 Bathrooms

 2 Car Garage

Creating an inviting atmosphere, the Anela Journey townhome floor plan has it all. With 3 bedrooms, 2.5 bathrooms, and a 2-car garage. Enter to find a perfect area for a hall tree for organizing hats, coats, and bags, and a powder bath right off the garage. The living space remains open to keep spacious with a kitchen, dining room, and living room. Upstairs you'll find a bathroom, convenient laundry room, and all the bedrooms, with the owner's suite and bath giving plenty of room.

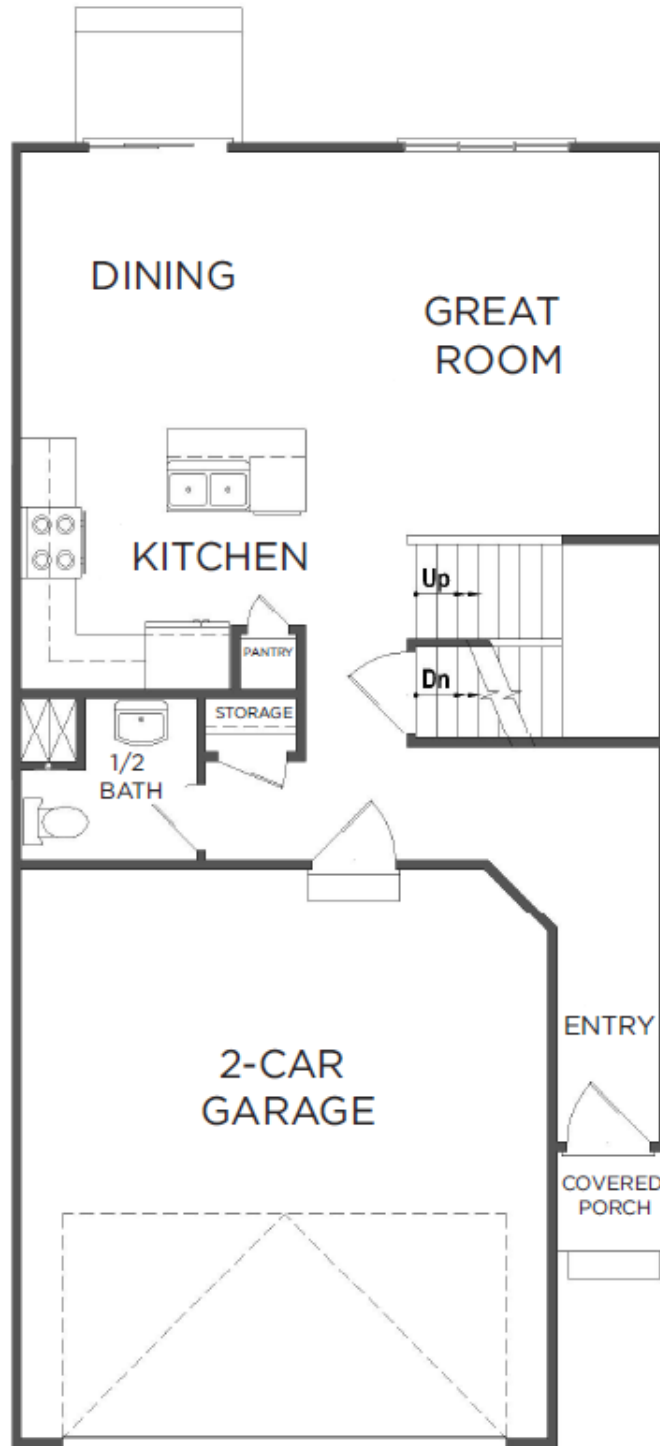


Interior Unit



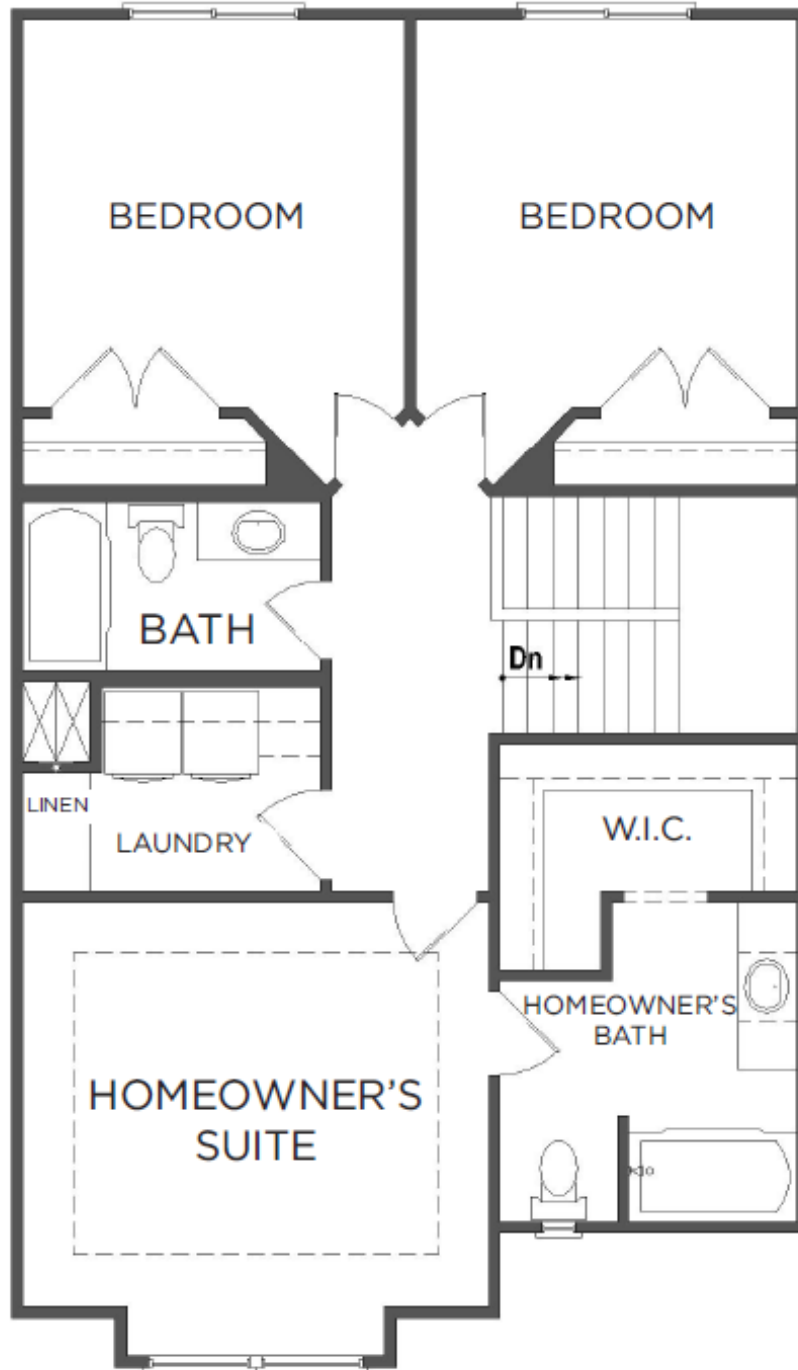
www.visionaryhomes.com

MAIN LEVEL- WITH BASEMENT



*Visionary Homes reserves the right to change prices without notice.
Approximate square footage and options shown in plan may not be included in base price.

UPPER LEVEL



www.visionaryhomes.com

UNFINISHED BASEMENT

