

[www.visionaryhomes.com](http://www.visionaryhomes.com)



## Voyage

1 Elevations Available

 1,545 Total Sq.Ft.

 3 Bedrooms

 2.5 Bathrooms

 2 Car Garage

Enter the Anela Voyage townhome and feel right at home with the open concept floor plan, featuring the living room, kitchen, and dining on the main floor. The owner's suite and bathroom upstairs are spacious and include a walk-in closet right off the bath. Featuring 3 bedrooms and 2.5 bathrooms, this slab-on-grade townhome creates plenty of space for you and your family.

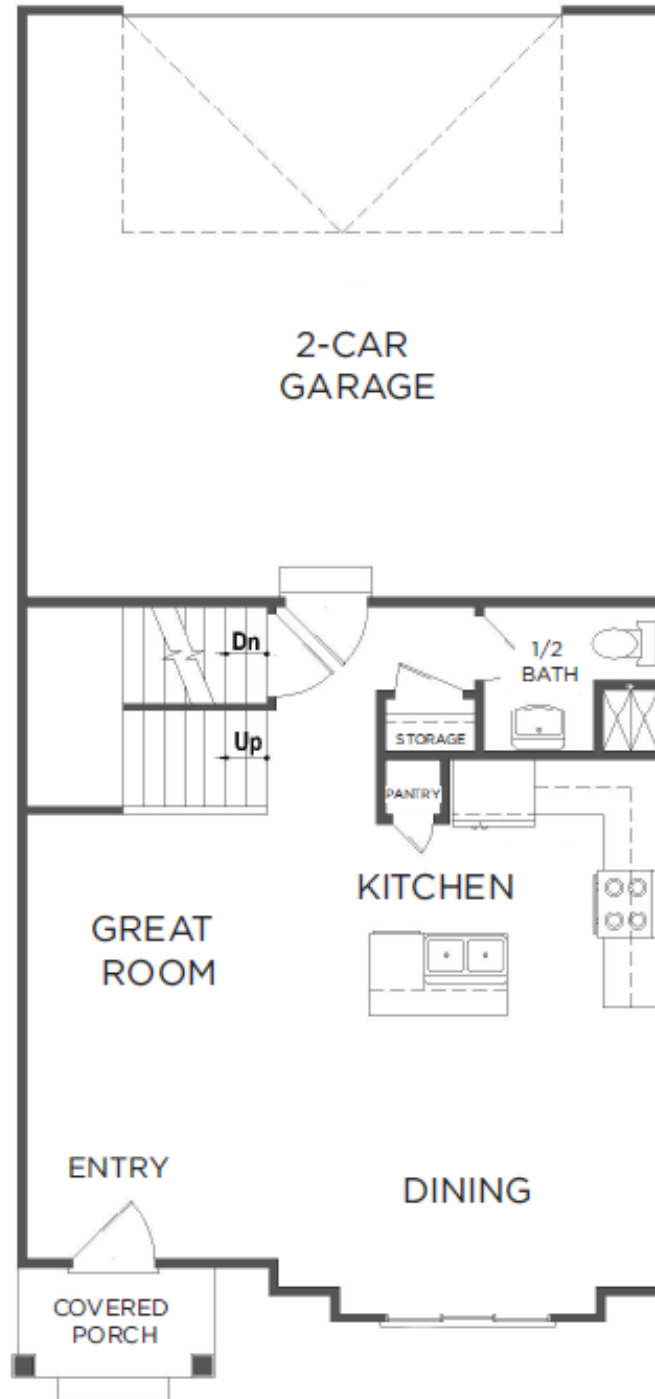


\*Visionary Homes reserves the right to change prices without notice.  
Approximate square footage and options shown in plan may not be included in base price.

435.228.4702  
[visionaryhomes.com](http://visionaryhomes.com)

[www.visionaryhomes.com](http://www.visionaryhomes.com)

MAIN LEVEL

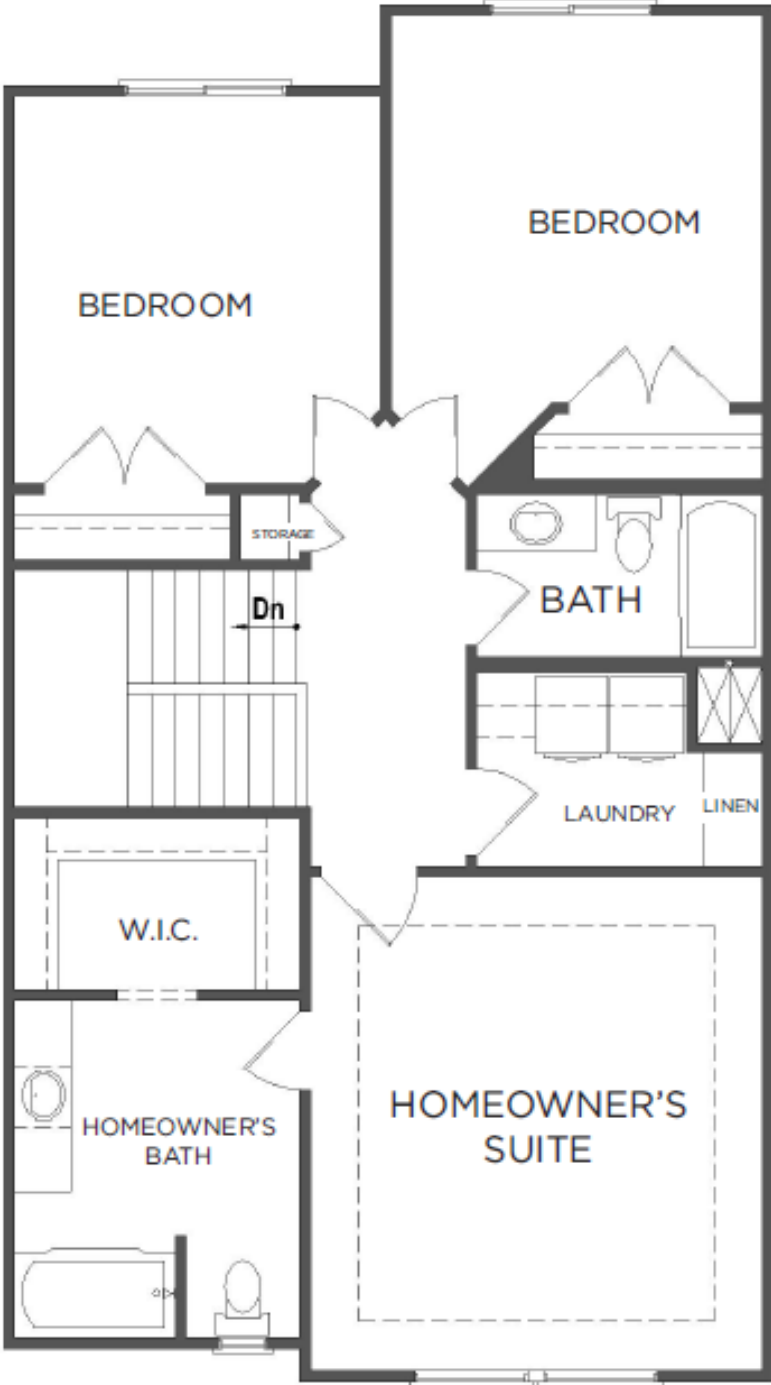


\*Visionary Homes reserves the right to change prices without notice.  
Approximate square footage and options shown in plan may not be included in base price.



[www.visionaryhomes.com](http://www.visionaryhomes.com)

UPPER LEVEL



\*Visionary Homes reserves the right to change prices without notice. Approximate square footage and options shown in plan may not be included in base price.

[www.visionaryhomes.com](http://www.visionaryhomes.com)

## UNFINISHED BASEMENT

