

[www.visionaryhomes.com](http://www.visionaryhomes.com)



## Discovery

1 Elevations Available

 1,384 Total Sq.Ft.

 3 Bedrooms

 2.5 Bathrooms

 2 Car Garage

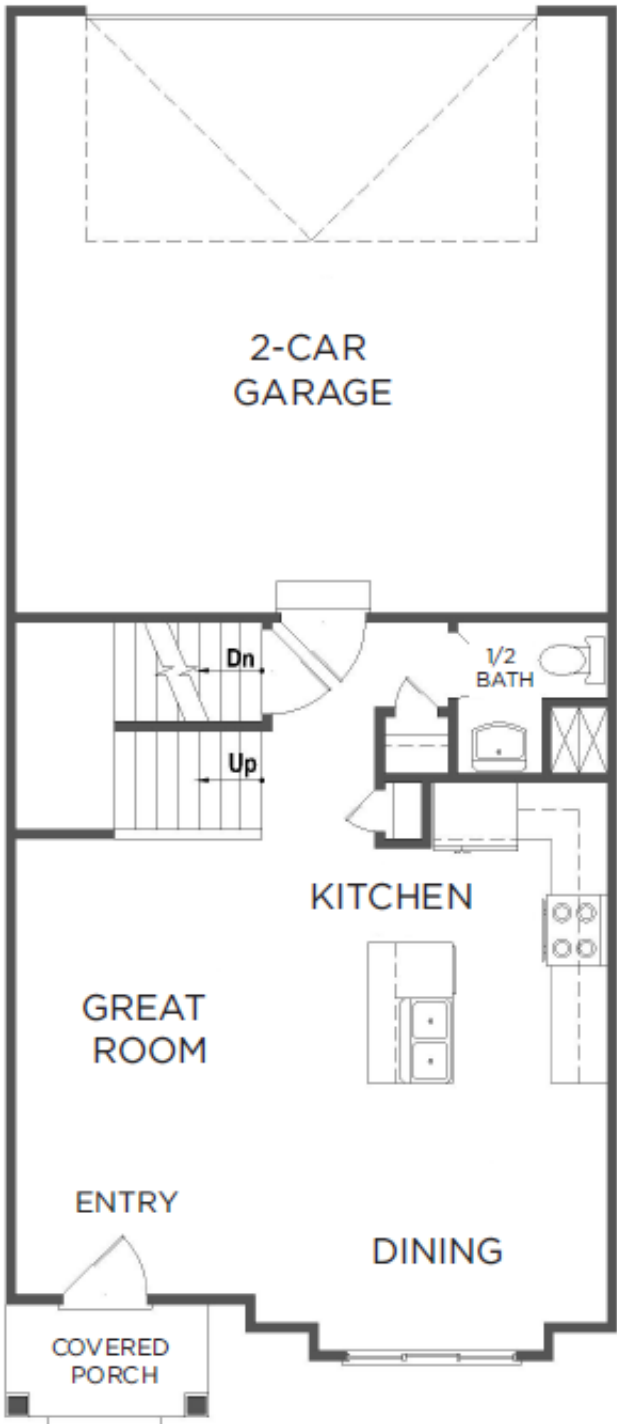
With 3 bedrooms, 2.5 bathrooms, and 2-car garage, the Anela – The Discovery offers up everything a contemporary townhome needs and more. You and your family will enjoy the open concept layout with the living room off the entryway and a front dining space, while upstairs, you'll find the sleeping quarters, convenient laundry, and a spacious owner's suite and bath. This is a slab-on-grade townhome.





[www.visionaryhomes.com](http://www.visionaryhomes.com)

MAIN LEVEL - SLAB ON GRADE

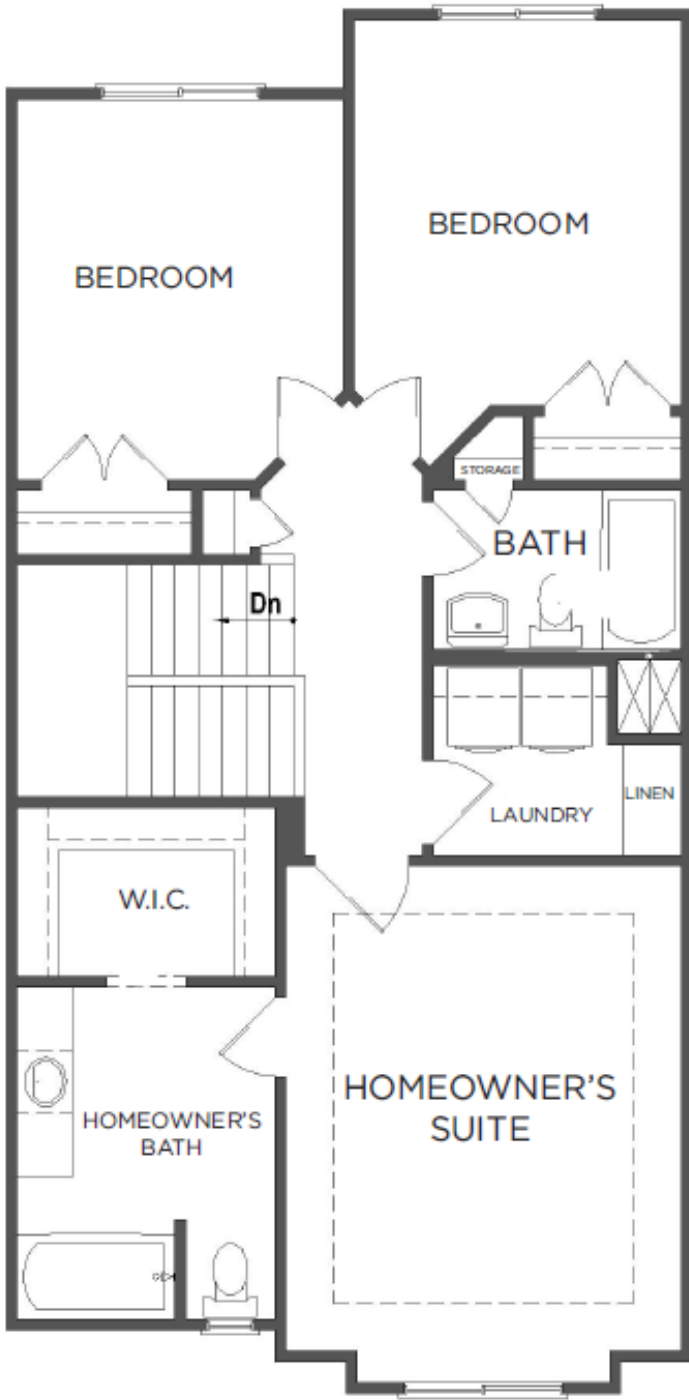


\*Visionary Homes reserves the right to change prices without notice.  
Approximate square footage and options shown in plan may not be included in base price.



[www.visionaryhomes.com](http://www.visionaryhomes.com)

UPPER LEVEL

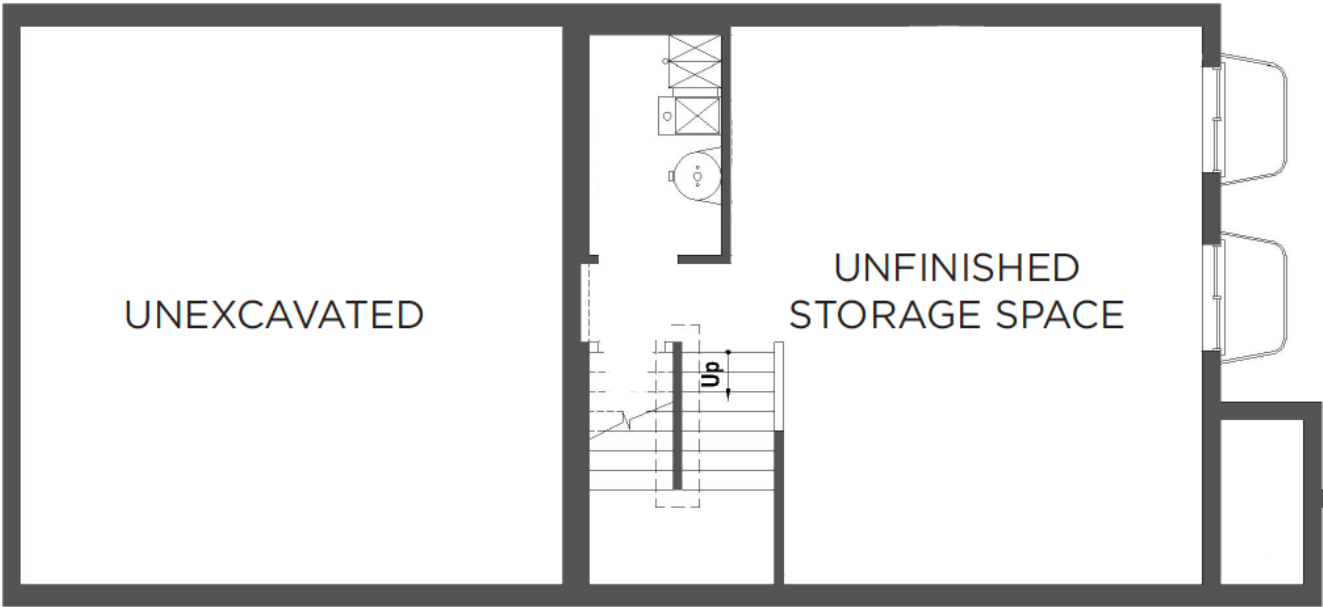


\*Visionary Homes reserves the right to change prices without notice.  
Approximate square footage and options shown in plan may not be included in base price.



[www.visionaryhomes.com](http://www.visionaryhomes.com)

UNFINISHED BASEMENT



\*Visionary Homes reserves the right to change prices without notice.  
Approximate square footage and options shown in plan may not be included in base price.