

www.visionaryhomes.com


Ponderosa

5 Elevations Available

 2,173 Total Sq.Ft.

 4 Bedrooms

 2.5 Bathrooms

 2 - 3 Car Garage

Feel right at home in the Ponderosa home design which offers 4 bedrooms, 2.5 bathrooms, and a 2 car garage. Walk inside through the entry to be welcomed into the open living space with the kitchen and living room. The kitchen showcases a large island with a dual sink and a walk-in pantry. Right off the garage is a mudroom and convenient powder bath. The primary suite is on the main level, featuring a spacious bathroom and walk-in closet with a window. Take a step upstairs to find a gorgeous open to below feature connecting the upstairs with the lower main living space. Discover bedrooms on the upper floor with a bathroom including a water closet and a laundry room. Spend evenings relaxing out on your front covered porch with your family as the weather is ideal in Southern Utah all year round.



Desert Territorial



Desert Spanish



Desert Cottage

*Visionary Homes reserves the right to change prices without notice.
Approximate square footage and options shown in plan may not be included in base price.

435.228.4702
visionaryhomes.com

www.visionaryhomes.com

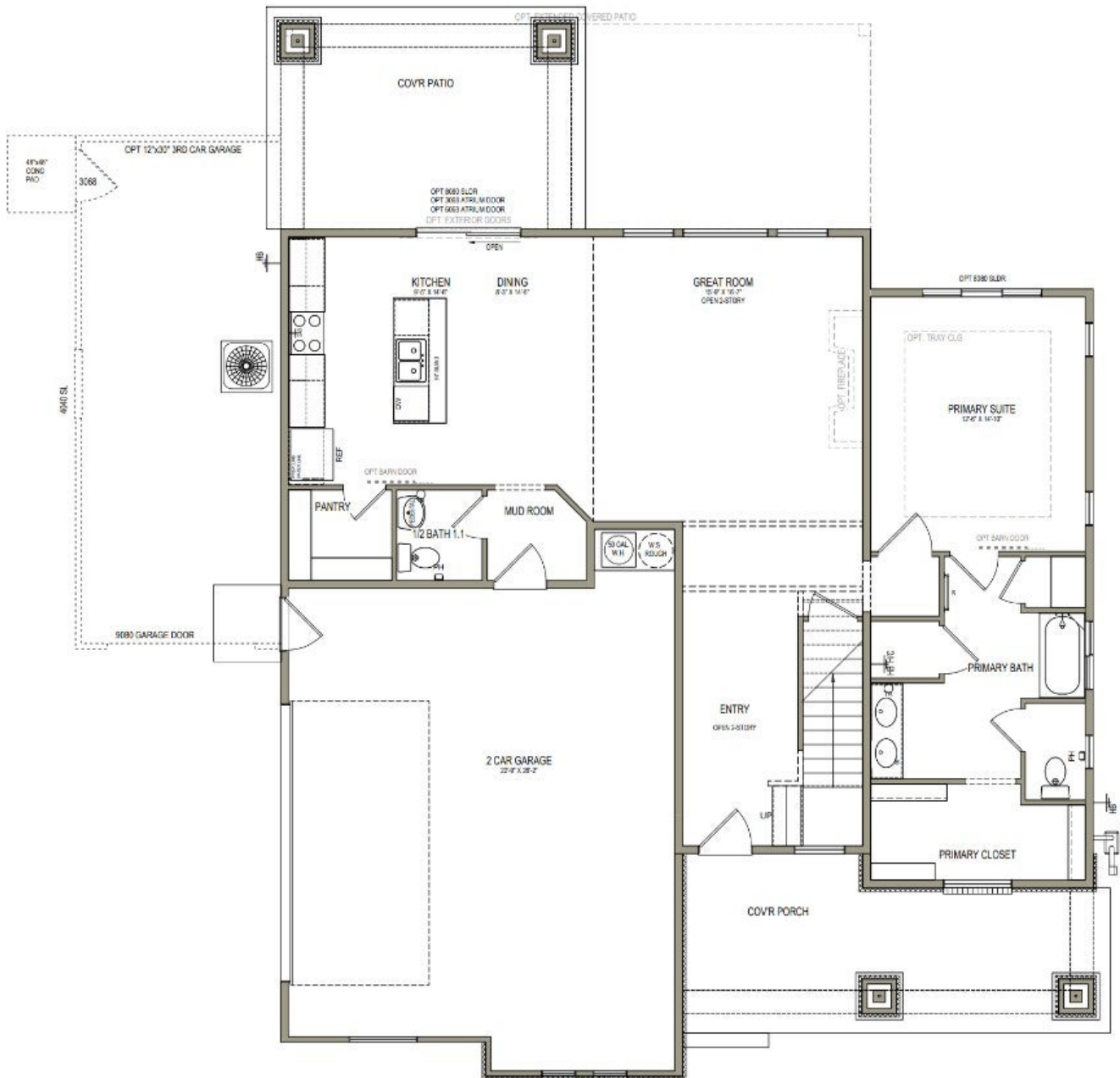


Desert Craftsman



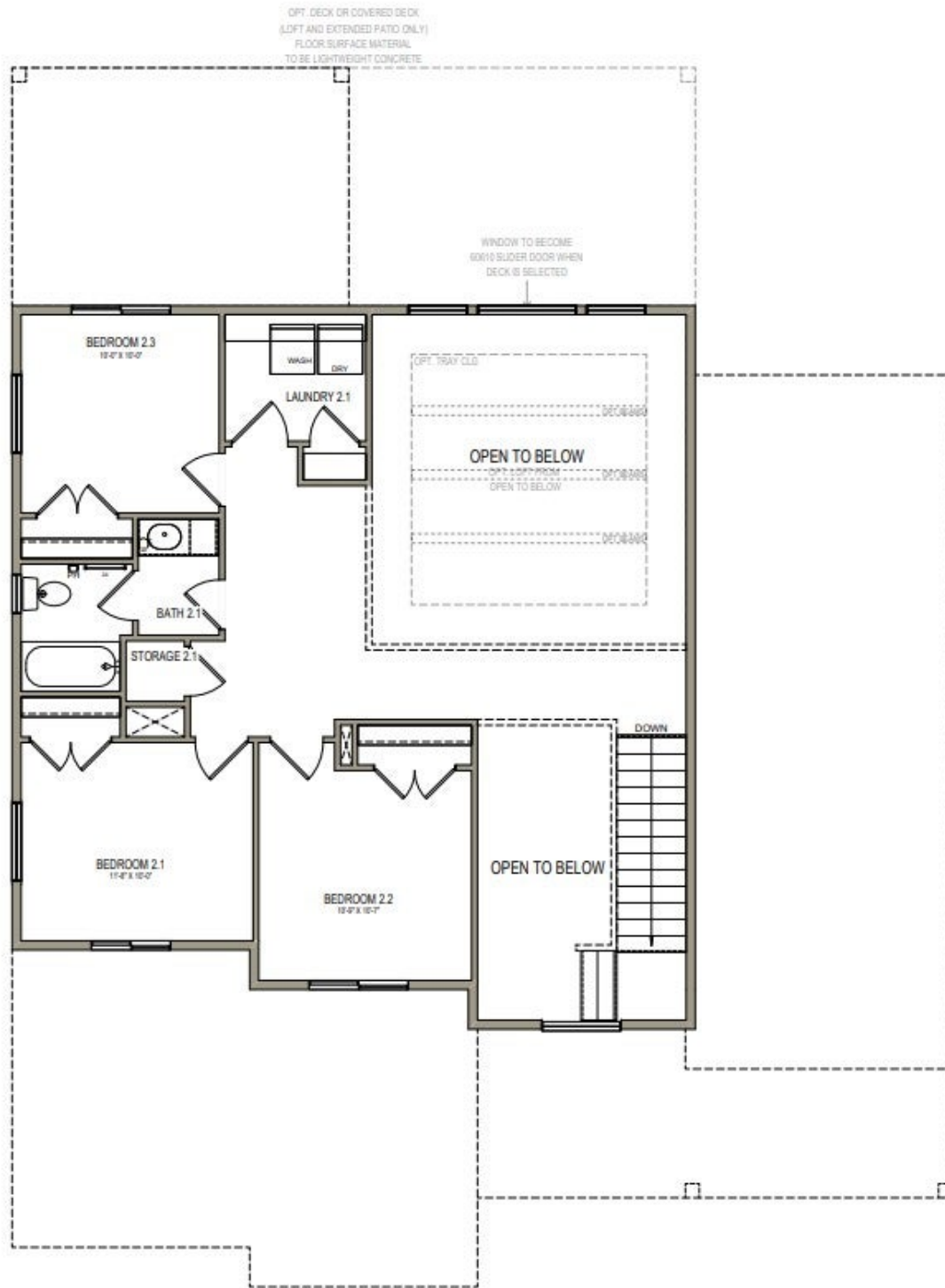
Desert Modern

MAIN LEVEL - SLAB ON GRADE



www.visionaryhomes.com

UPPER LEVEL



*Visionary Homes reserves the right to change prices without notice.
Approximate square footage and options shown in plan may not be included in
base price.

435.228.4702
visionaryhomes.com