



www.visionaryhomes.com




Sale Price

\$379,990

 1,714 Sq.Ft.

 3 Bedrooms

 2 Car Garage

This **MOVE-IN-READY** townhome offers 3 bedrooms and 2.5 bathrooms - The main floor features an open concept with a family room, dining area, and kitchen that boasts a walk-in pantry and island. At the back of the home you'll find access to the 2 car garage that provides essential covered parking and additional storage solutions. On the second level, a loft provides versatile space, alongside a laundry room and guest bathroom. Two guest bedrooms and the primary suite with a generous walk-in closet complete the second level. Throughout the townhome you'll enjoy features like granite countertops, white soft-close cabinets, stainless steel appliances, and smart home features.

Ask about the \$10,000 incentives on this home!



Desert Territorial, Front



Desert Territorial, Rear

*Visionary Homes reserves the right to change prices without notice. Approximate square footage and options shown in plan may not be included in base price.

435.228.4702
visionaryhomes.com

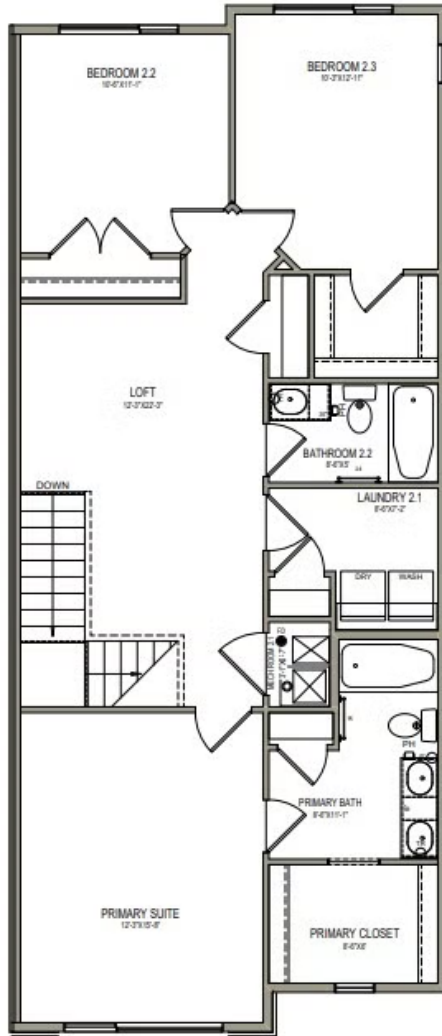
MAIN LEVEL - SLAB ON GRADE



*Visionary Homes reserves the right to change prices without notice. Approximate square footage and options shown in plan may not be included in base price.

435.228.4702
visionaryhomes.com

UPPER LEVEL



*Visionary Homes reserves the right to change prices without notice. Approximate square footage and options shown in plan may not be included in base price.

435.228.4702
visionaryhomes.com