

www.visionaryhomes.com



Sale Price

\$414,990

 1,714 Sq.Ft.

 3 Bedrooms

 2 Car Garage

Introducing the Mead 2-story townhome, offering 3 bedrooms and 2.5 bathrooms. The main floor features an open concept with a family room, dining area, and kitchen that boasts a walk-in pantry and island. At the back of the home you'll find access to the 2 car garage that provides essential covered parking and additional storage solutions. On the second level, a loft provides versatile space, alongside a laundry room and guest bathroom. Two guest bedrooms and the primary suite with a generous walk-in closet complete the second level. Throughout the townhome you'll enjoy features like granite countertops, white soft-close cabinets, stainless steel appliances, and smart home features.



Desert Territorial, Front



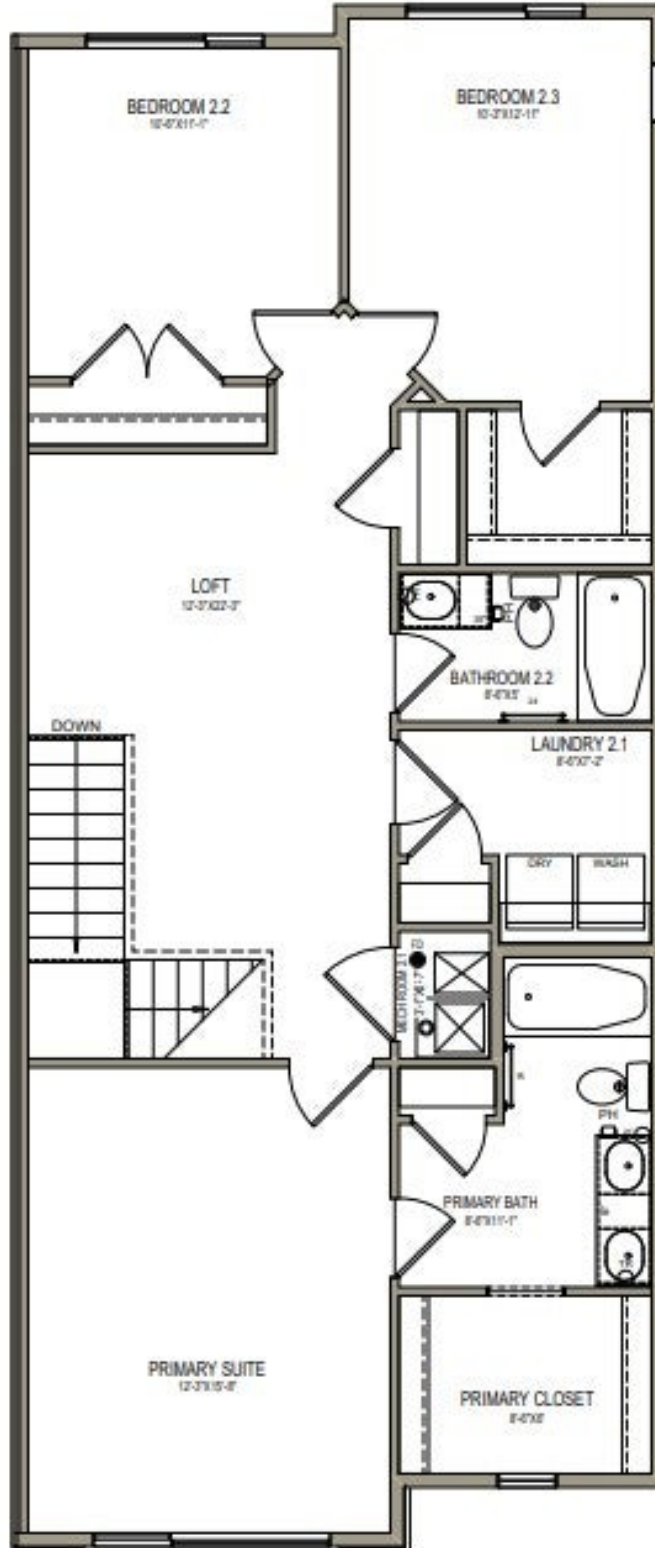
Desert Territorial, Rear

MAIN LEVEL - SLAB ON GRADE



*Visionary Homes reserves the right to change prices without notice.
Approximate square footage and options shown in plan may not be included in base price.

UPPER LEVEL



*Visionary Homes reserves the right to change prices without notice. Approximate square footage and options shown in plan may not be included in base price.