

[www.visionaryhomes.com](http://www.visionaryhomes.com)



Sale Price

**\$None**

 1,831 Sq.Ft.

 3 Bedrooms

 2 Car Garage

**6005 Carnelian Parkway, St. George, UT 84790**

If you're looking for stunning views and easy access to everything St. George has to offer, a Visionary home in Desert Color is the perfect spot for you. This incredible master-planned community is located conveniently off the I-15 corridor. The Desert Color community is sustainably planned and offers unlimited recreation with breathtaking views. Become a part of something bigger when you move into this all-inclusive community. With schools, shopping, outdoor trailheads, and so much more, there is something for everyone in Desert Color. Take a hike with friends on a community trail one day and swim in the pool the next, as adventure awaits in this community!

**Call to Schedule a Private Tour 435-228-4702**

If you're looking for a new home in St. George, Desert Color Townhomes may be the perfect spot for you. When you're ready to purchase your new home, we're here to help! Contact us today to request information about house plans in St. George, Utah in our Desert Color Townhome community.

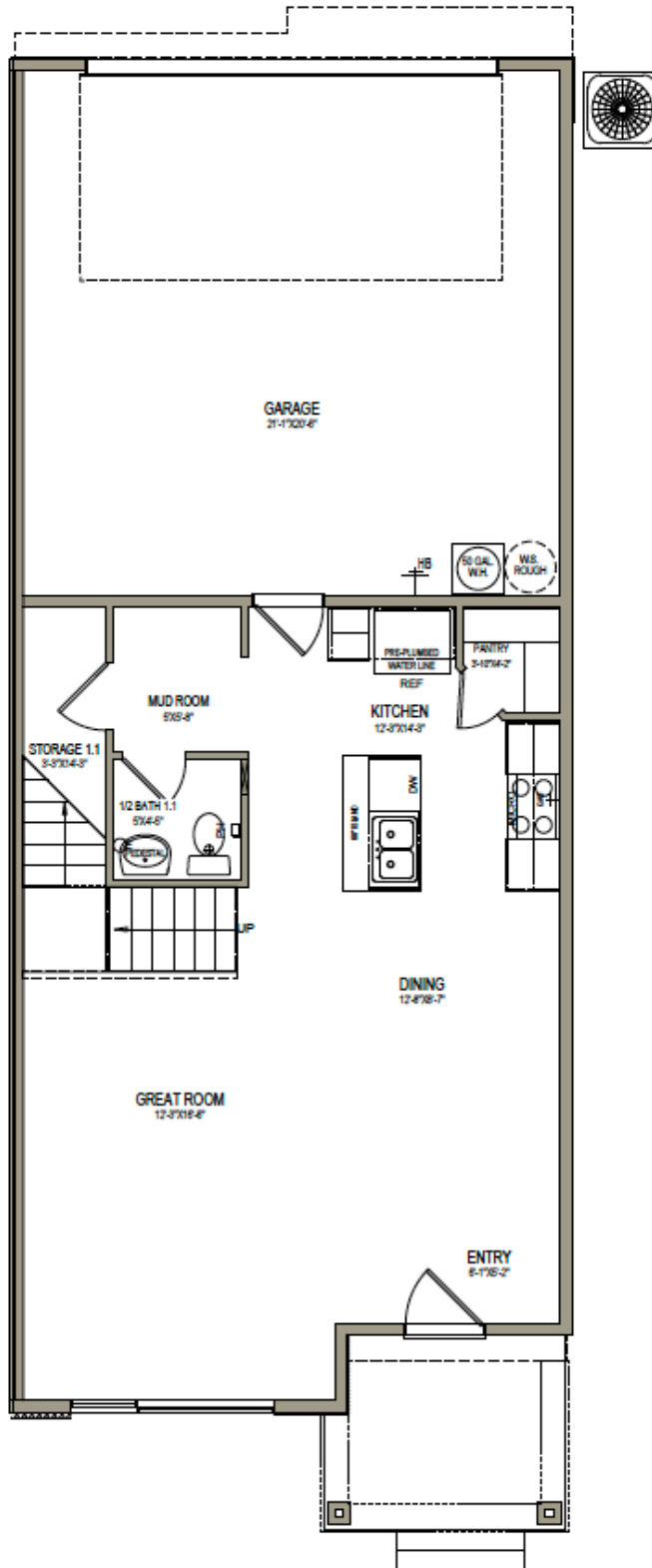


Come Visit our Desert Color  
Townhome model 6005 S  
Carnelian Parkway, St. George

\*Visionary Homes reserves the right to change prices without notice.  
Approximate square footage and options shown in plan may not be included in base price.

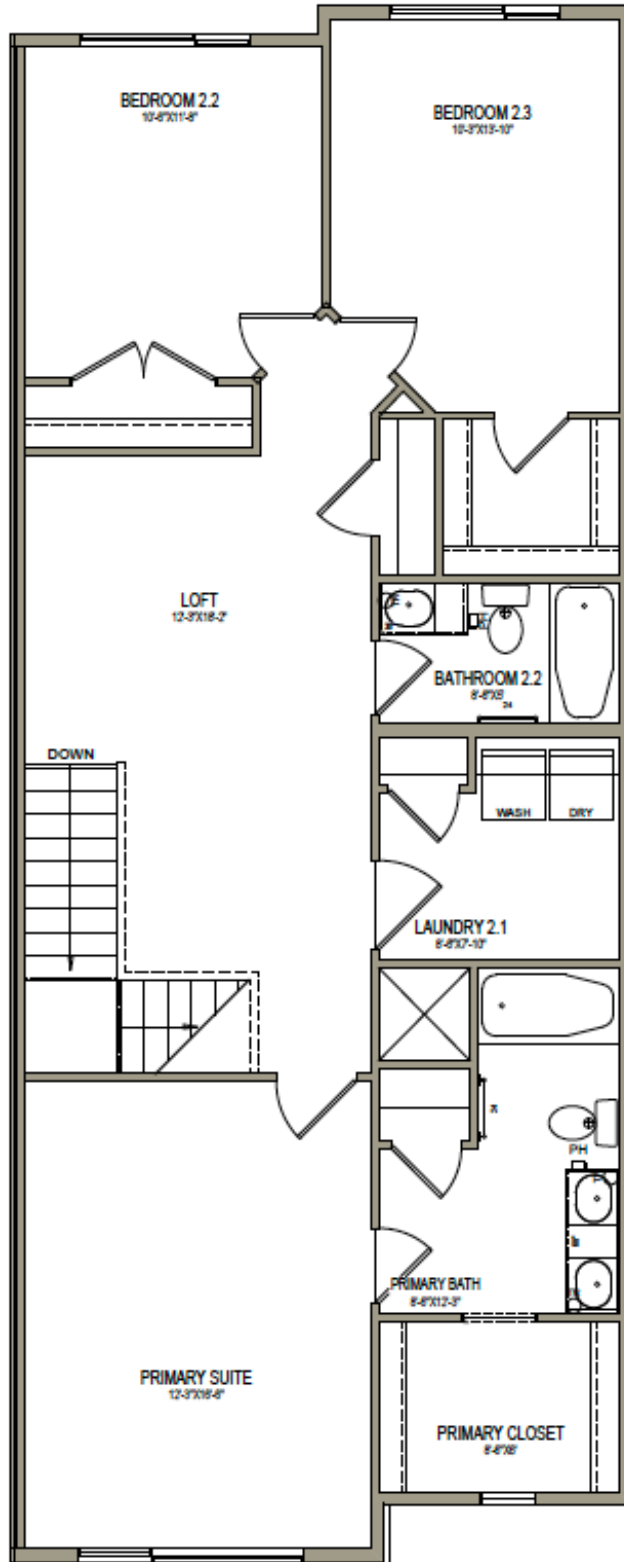
**435.228.4702**  
[visionaryhomes.com](http://www.visionaryhomes.com)

## FIRST LEVEL - SLAB ON GRADE



\*Visionary Homes reserves the right to change prices without notice. Approximate square footage and options shown in plan may not be included in base price.

UPPER LEVEL



\*Visionary Homes reserves the right to change prices without notice. Approximate square footage and options shown in plan may not be included in base price.