

www.visionaryhomes.com



Sale Price

\$749,626

 2,552 Sq.Ft.

 4 Bedrooms

 2 Car Garage

Let The Anasazi welcome you in with the open-to-below entryway for plenty of natural lighting to shine into your living space. The Anasazi includes 4 bedrooms and 2.5 bathrooms, with a flex room off the entry to turn into anything from a home office to a craft room or additional bedroom. The main living space has an open-concept layout, for a natural flow from the kitchen to family room. Upstairs you'll discover a loft for additional space in your home, a convenient laundry room, and the spacious primary suite that includes a gorgeous bathroom, and large walk-in closet.

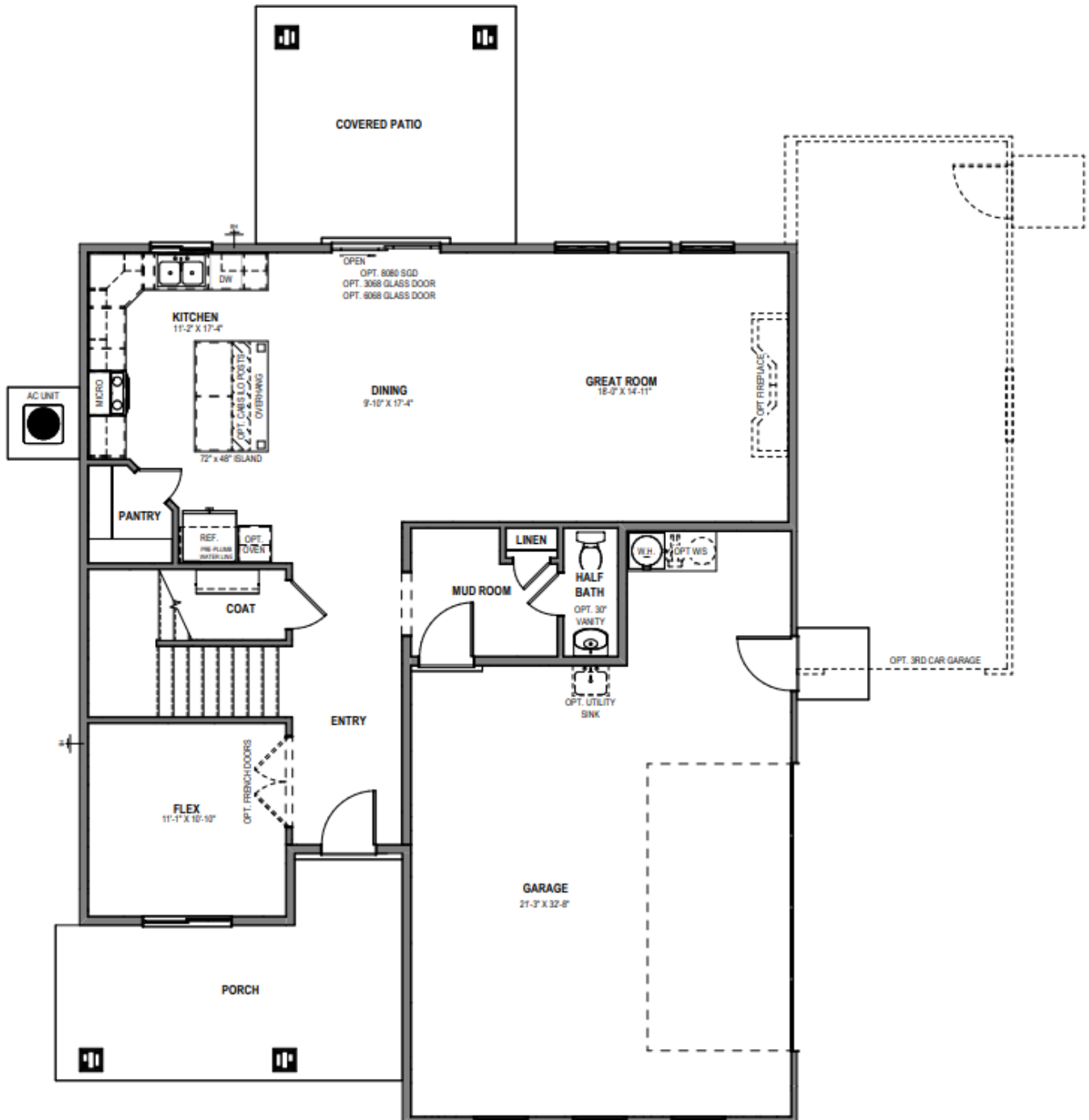


Desert Territorial

*Visionary Homes reserves the right to change prices without notice.
Approximate square footage and options shown in plan may not be included in base price.

435.228.4702
[visionaryhomes.com](http://www.visionaryhomes.com)

MAIN LEVEL - SLAB ON GRADE



UPPER LEVEL

