

[www.visionaryhomes.com](http://www.visionaryhomes.com)


## Agave

5 Elevations Available

 1,841 Total Sq.Ft.

 3 Bedrooms

 2.5 Bathrooms

 2 - 3 Car Garage

Both stylish and functional, The Agave rambler makes you feel right at home with 3 bedrooms and 2.5 bathrooms. The great room is open to the kitchen and dining with a spacious pantry that gives room for all your kitchen essentials. The primary suite features a beautiful bathroom and large walk-in closet with a window for optimal storage space. Additional bedrooms are located on opposite sides of the home giving you plenty of privacy. The Agave plan also featuring a convenient laundry room and mudroom off the garage and a flex room near the primary suite that allows room to create a study space or lounge corner.



\*Visionary Homes reserves the right to change prices without notice. Approximate square footage and options shown in plan may not be included in base price.

**435.228.4702**  
[visionaryhomes.com](http://visionaryhomes.com)

[www.visionaryhomes.com](http://www.visionaryhomes.com)



Desert Craftsman



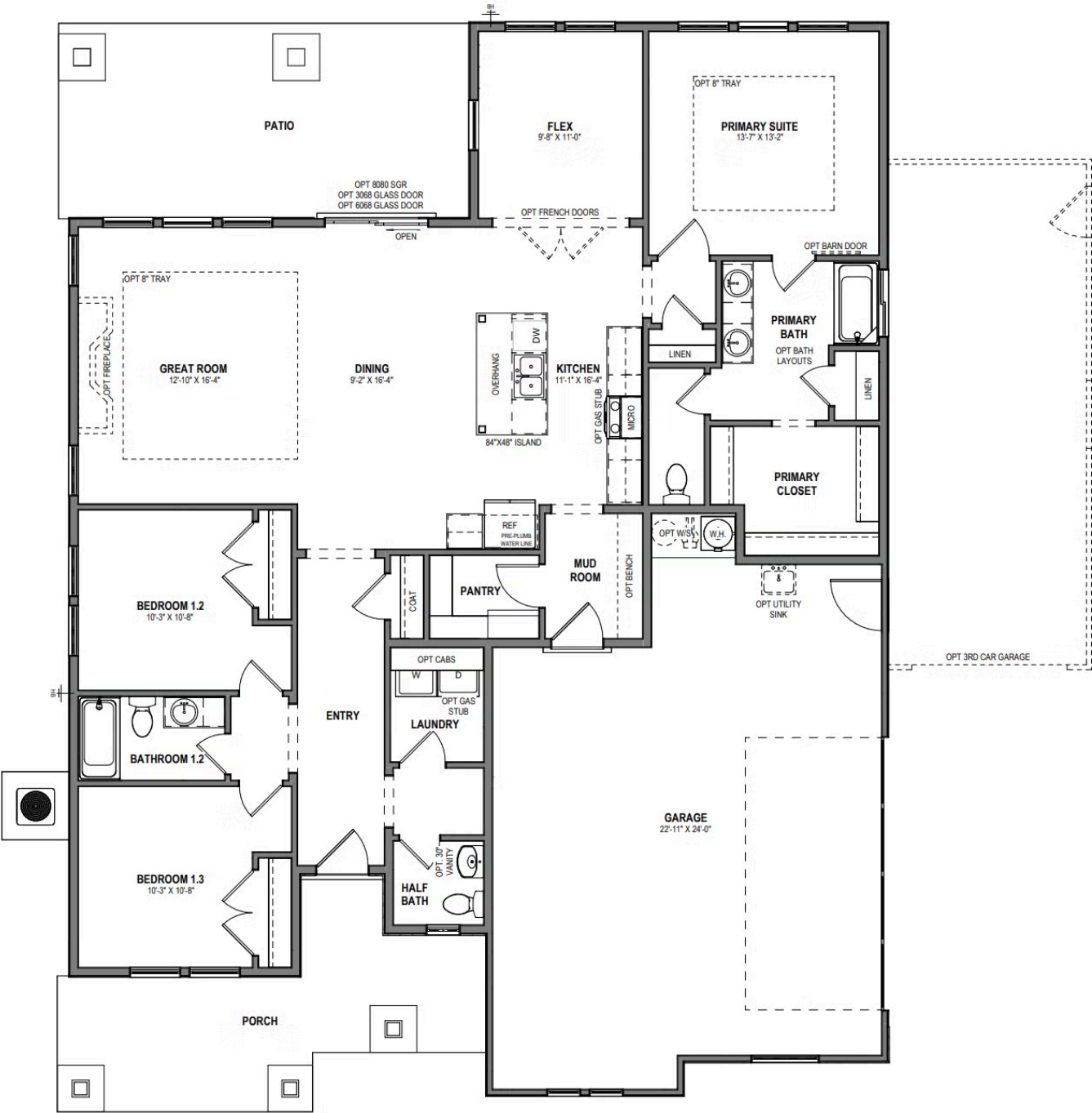
Desert Modern





www.visionaryhomes.com

MAIN LEVEL - SLAB ON GRADE



\*Visionary Homes reserves the right to change prices without notice. Approximate square footage and options shown in plan may not be included in base price.