

www.visionaryhomes.com


Anasazi

5 Elevations Available

 2,473 Total Sq.Ft.

 4 - 5 Bedrooms

 2.5 Bathrooms

 2 - 3 Car Garage

The Anasazi is a versatile plan that features 4 bedrooms and 2.5 bathrooms, with a flex room off the entry to turn into anything from a home office to a craft room or additional bedroom. The main living space has an open-concept layout, for a natural flow from the kitchen to family room. Upstairs you'll see the loft space perfect for gathering loved ones, a convenient laundry room, and the spacious primary suite that includes a gorgeous bathroom, and large walk-in closet.



*Visionary Homes reserves the right to change prices without notice. Approximate square footage and options shown in plan may not be included in base price.

435.228.4702
visionaryhomes.com

www.visionaryhomes.com



Desert Craftsman

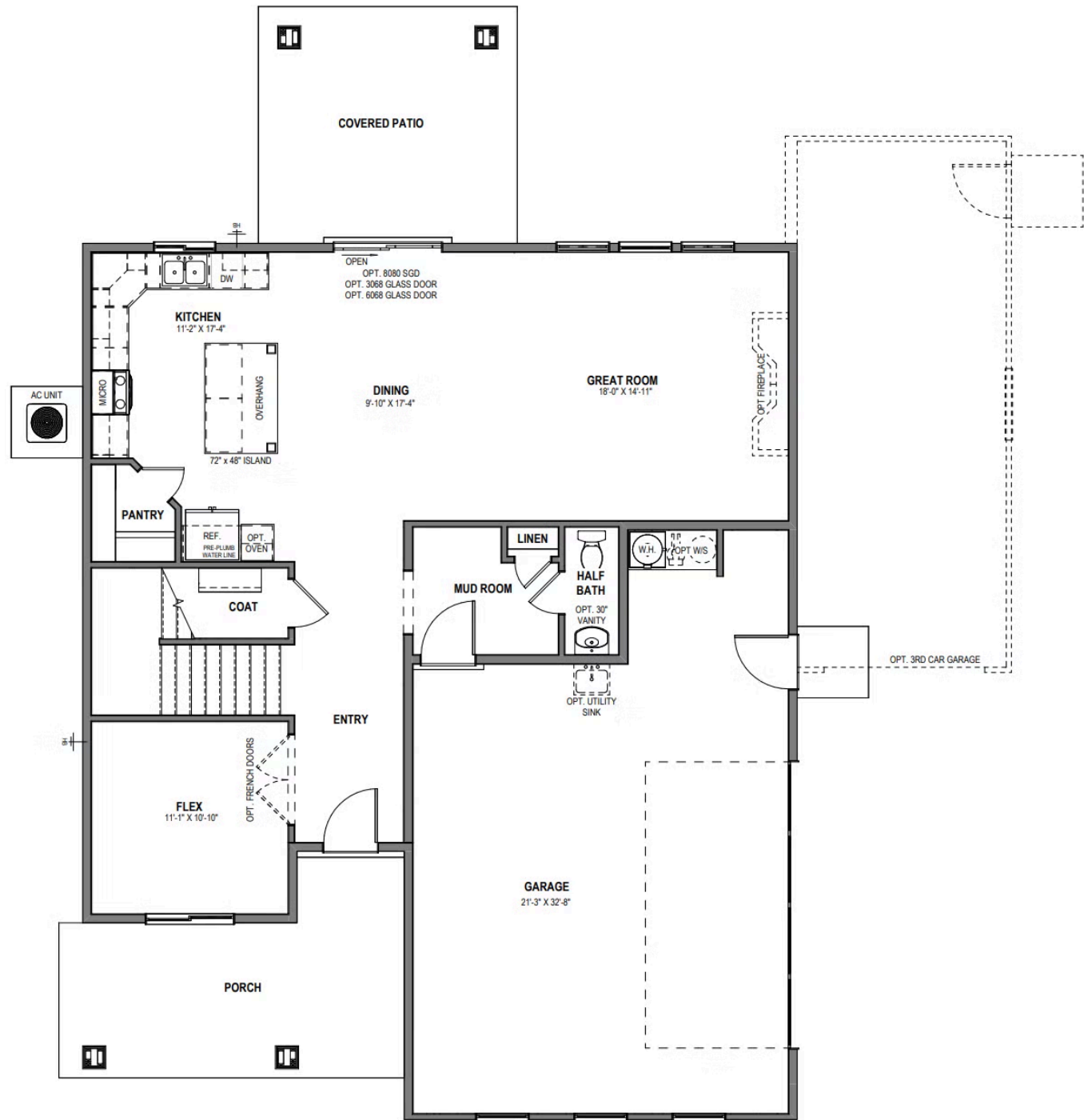


Desert Modern



www.visionaryhomes.com

MAIN LEVEL - SLAB ON GRADE

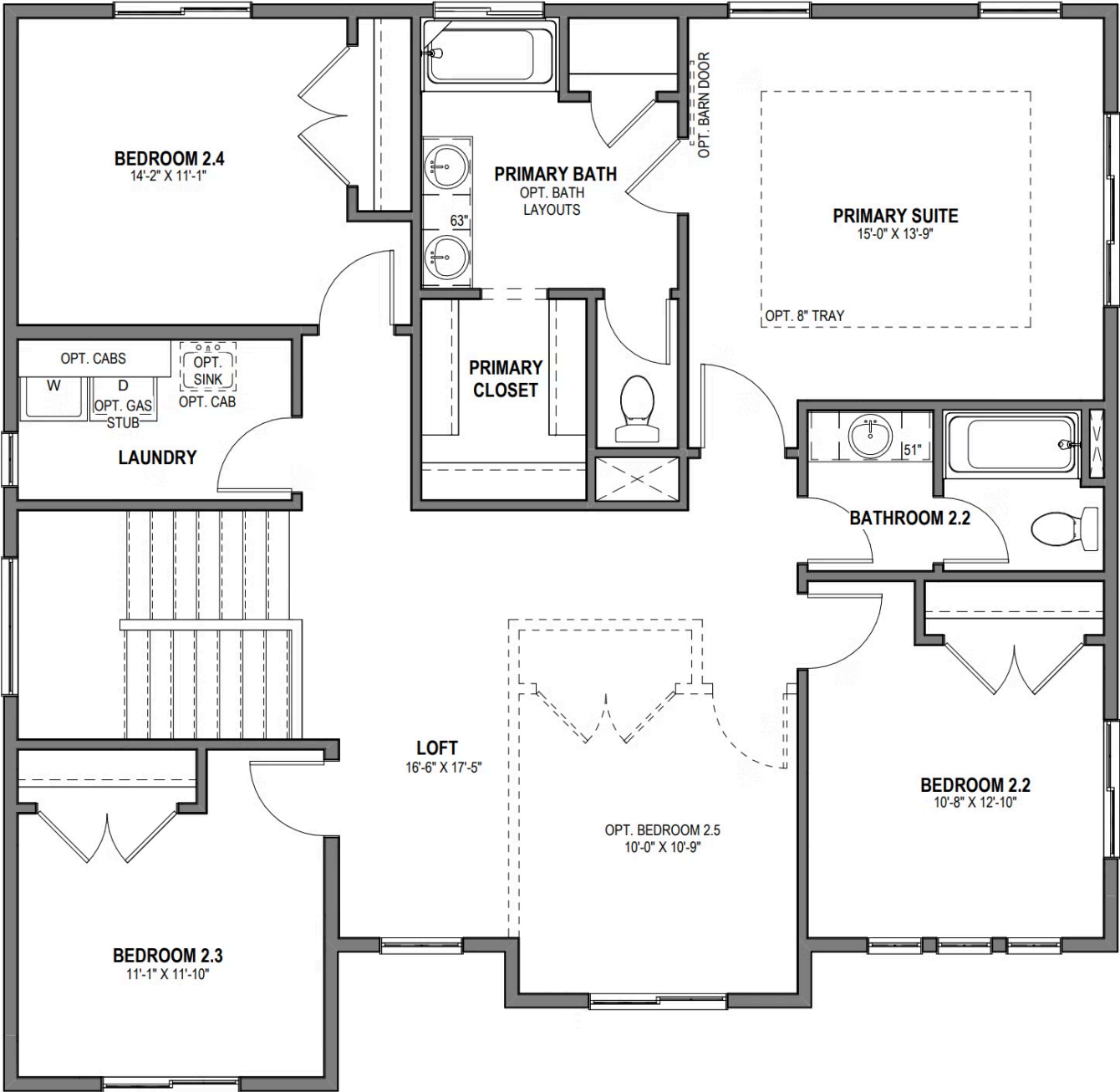


*Visionary Homes reserves the right to change prices without notice. Approximate square footage and options shown in plan may not be included in base price.



www.visionaryhomes.com

UPPER LEVEL



*Visionary Homes reserves the right to change prices without notice. Approximate square footage and options shown in plan may not be included in base price.