

www.visionaryhomes.com


Cliffrose

5 Elevations Available

 1,584 Total Sq.Ft.

 3 - 4 Bedrooms

 2 Bathrooms

 2 - 3 Car Garage

Enjoy living in The Cliffrose floor plan, featuring a stylish interior and exterior. With 3 bedrooms and 2 bathrooms, and showcasing an open-concept layout. A flex room off the entry creates the perfect space for a home office or living room. Discover a spacious pantry in the kitchen and an island for all your cooking needs. Off the great room, the primary suite showcases a luxurious bathroom and walk-in closet, while the other bedrooms and bathroom are down a hallway near the entry. This floorplan includes plenty of windows throughout for natural lighting to view the beautiful landscape in St. George.



*Visionary Homes reserves the right to change prices without notice. Approximate square footage and options shown in plan may not be included in base price.

435.228.4702
visionaryhomes.com

www.visionaryhomes.com



Desert Craftsman

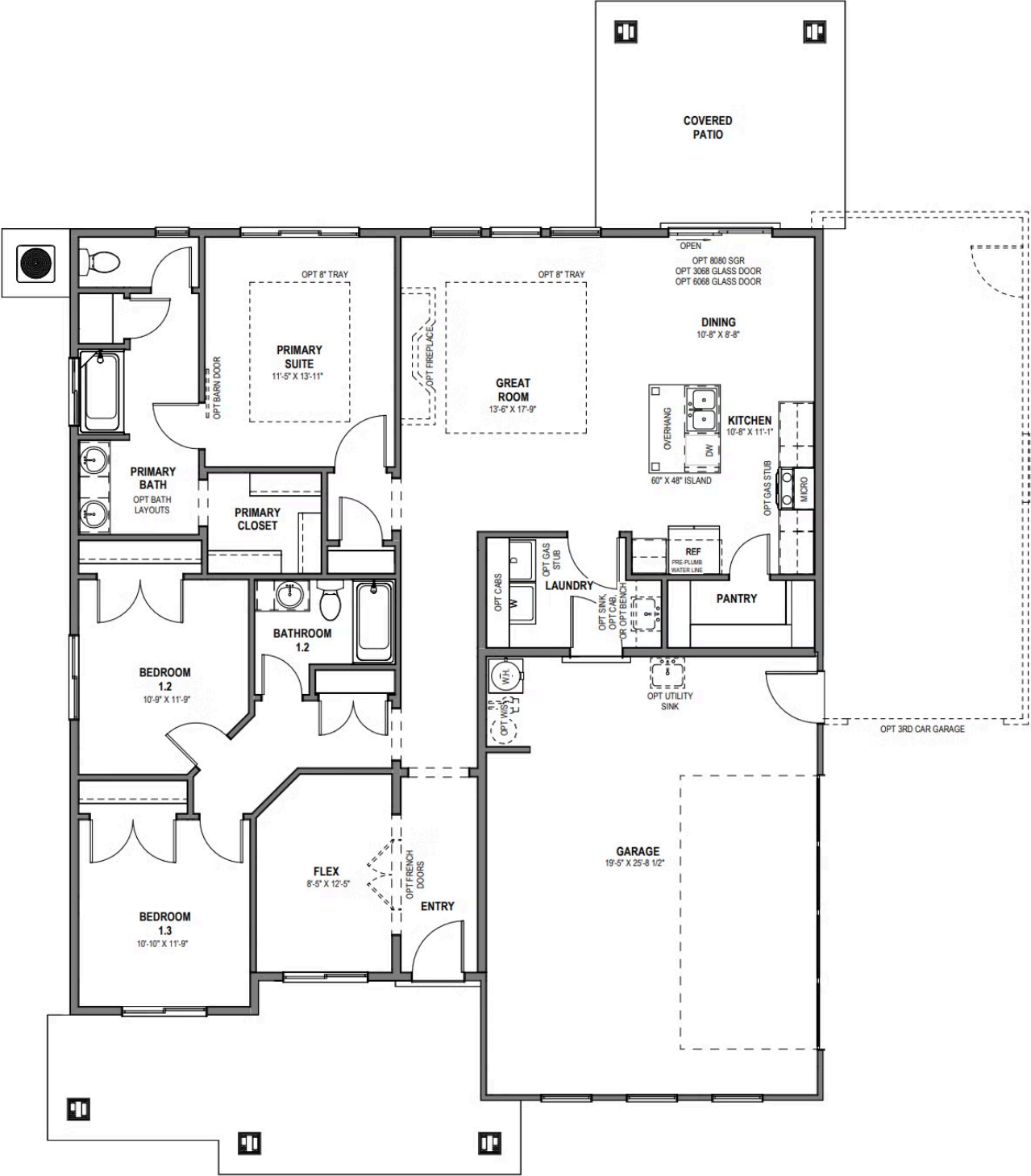


Desert Modern



www.visionaryhomes.com

MAIN LEVEL - SLAB ON GRADE



*Visionary Homes reserves the right to change prices without notice. Approximate square footage and options shown in plan may not be included in base price.