

[www.visionaryhomes.com](http://www.visionaryhomes.com)


# Ponderosa

5 Elevations Available

 2,131 Total Sq.Ft.

 4 Bedrooms

 2.5 Bathrooms

 2 - 3 Car Garage

Feel right at home in the Ponderosa home design which offers 4 bedrooms, 2.5 bathrooms, and a 2 car garage. Walk inside through the entry to be welcomed into the open living space with the kitchen and living room. The kitchen showcases a large island with a dual sink and a walk-in pantry. Right off the garage is a mudroom and convenient powder bath. The primary suite is on the main level, featuring a spacious bathroom and walk-in closet with a window. Take a step upstairs to find a gorgeous open to below feature connecting the upstairs with the lower main living space. Discover bedrooms on the upper floor with a bathroom including a water closet and a laundry room. Spend evenings relaxing out on your front covered porch with your family as the weather is ideal in Southern Utah all year round.



Elevation 1



Elevation 2



Elevation 3

\*Visionary Homes reserves the right to change prices without notice. Approximate square footage and options shown in plan may not be included in base price.

**435.228.4702**  
[visionaryhomes.com](http://visionaryhomes.com)

[www.visionaryhomes.com](http://www.visionaryhomes.com)



Desert Craftsman



Desert Modern





www.visionaryhomes.com

MAIN LEVEL - SLAB ON GRADE



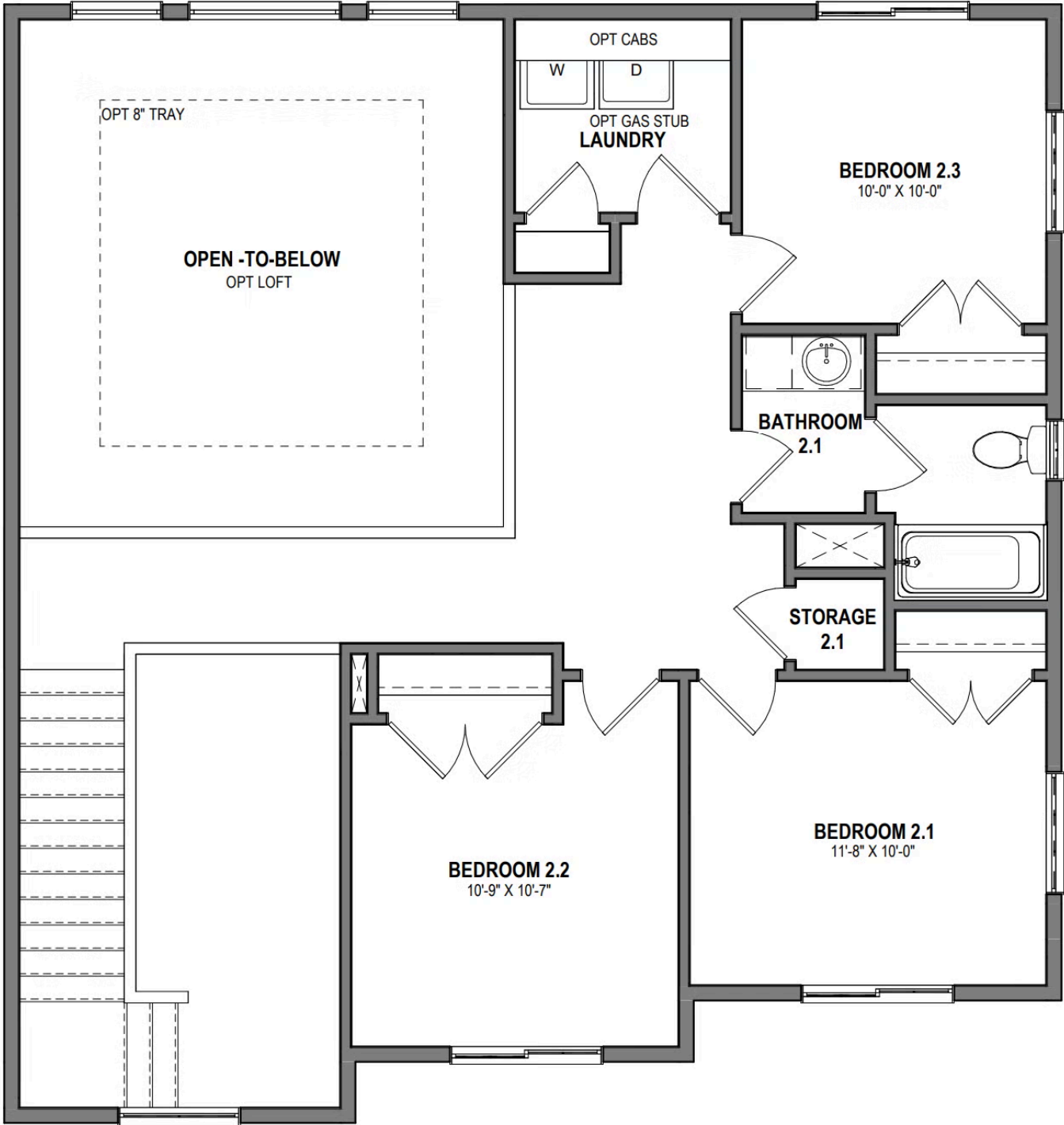
\*Visionary Homes reserves the right to change prices without notice. Approximate square footage and options shown in plan may not be included in base price.





www.visionaryhomes.com

UPPER LEVEL



\*Visionary Homes reserves the right to change prices without notice. Approximate square footage and options shown in plan may not be included in base price.