

www.visionaryhomes.com


Agave

3 Elevations Available

 1,841 Total Sq.Ft.

 3 Bedrooms

 2.5 Bathrooms

 3 Car Garage

Both stylish and functional, The Agave rambler makes you feel right at home with 3 bedrooms and 2.5 bathrooms. The great room is open to the kitchen and dining with a spacious pantry that gives room for all your kitchen essentials. The primary suite features a beautiful bathroom and large walk-in closet with a window for optimal storage space. Additional bedrooms are located on opposite sides of the home giving you plenty of privacy. The Agave plan also featuring a convenient laundry room and mudroom off the garage and a flex room near the primary suite that allows room to create a study space or lounge corner.



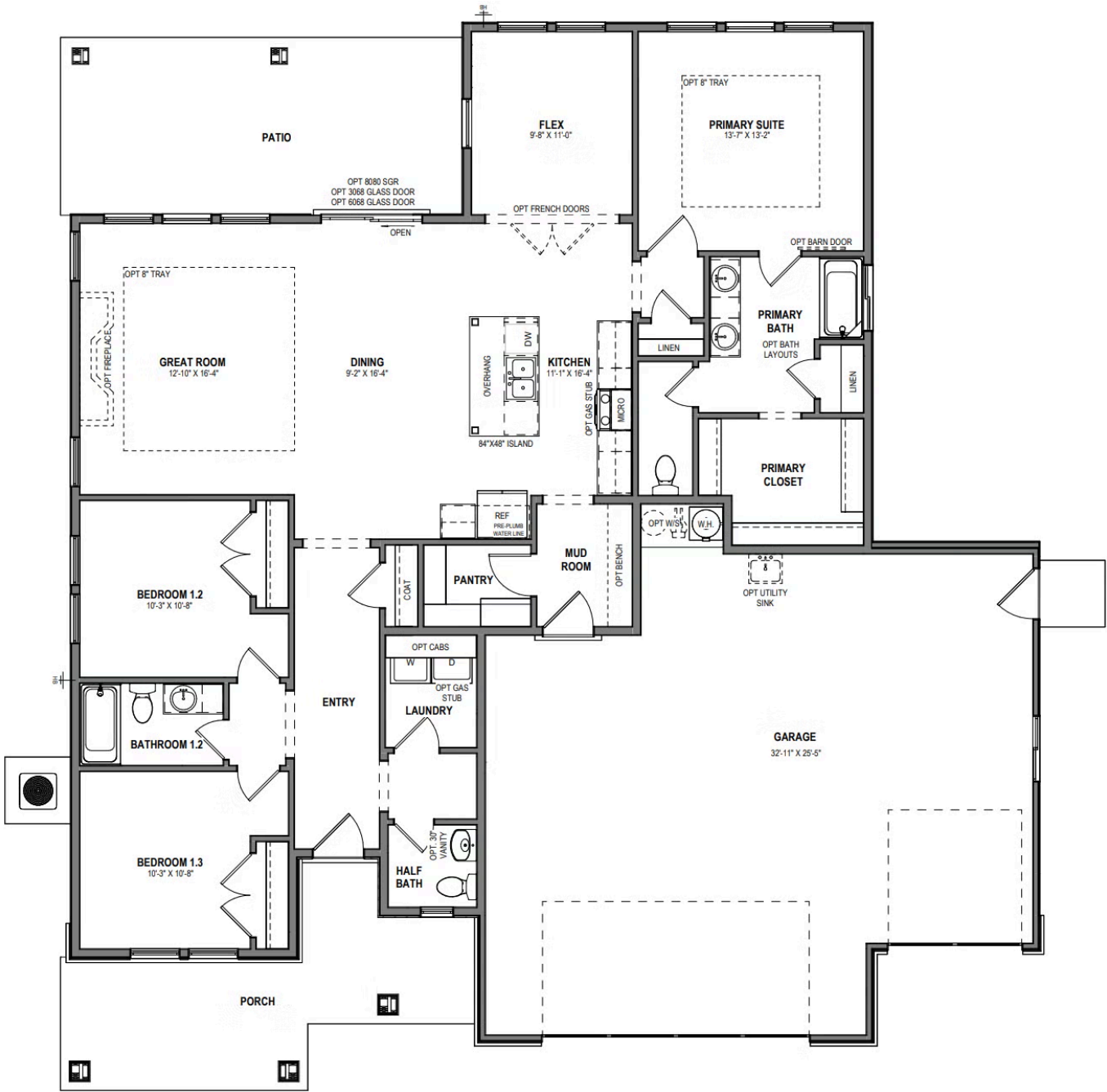
*Visionary Homes reserves the right to change prices without notice. Approximate square footage and options shown in plan may not be included in base price.

435.228.4702
visionaryhomes.com



www.visionaryhomes.com

MAIN LEVEL - SLAB ON GRADE



*Visionary Homes reserves the right to change prices without notice. Approximate square footage and options shown in plan may not be included in base price.