

[www.visionaryhomes.com](http://www.visionaryhomes.com)


## Cliffrose

3 Elevations Available

 1,584 Total Sq.Ft.

 3 Bedrooms

 2 Bathrooms

 2 - 3 Car Garage

Enjoy living in The Cliffrose floor plan, featuring a stylish interior and exterior. With 3 bedrooms and 2 bathrooms, and showcasing an open-concept layout. A flex room off the entry creates the perfect space for a home office or living room. Discover a spacious pantry in the kitchen and an island for all your cooking needs. Off the great room, the primary suite showcases a luxurious bathroom and walk-in closet, while the other bedrooms and bathroom are down a hallway near the entry. This floorplan includes plenty of windows throughout for natural lighting to view the beautiful landscape in St. George.



Elevation 1



Elevation 2



Elevation 3

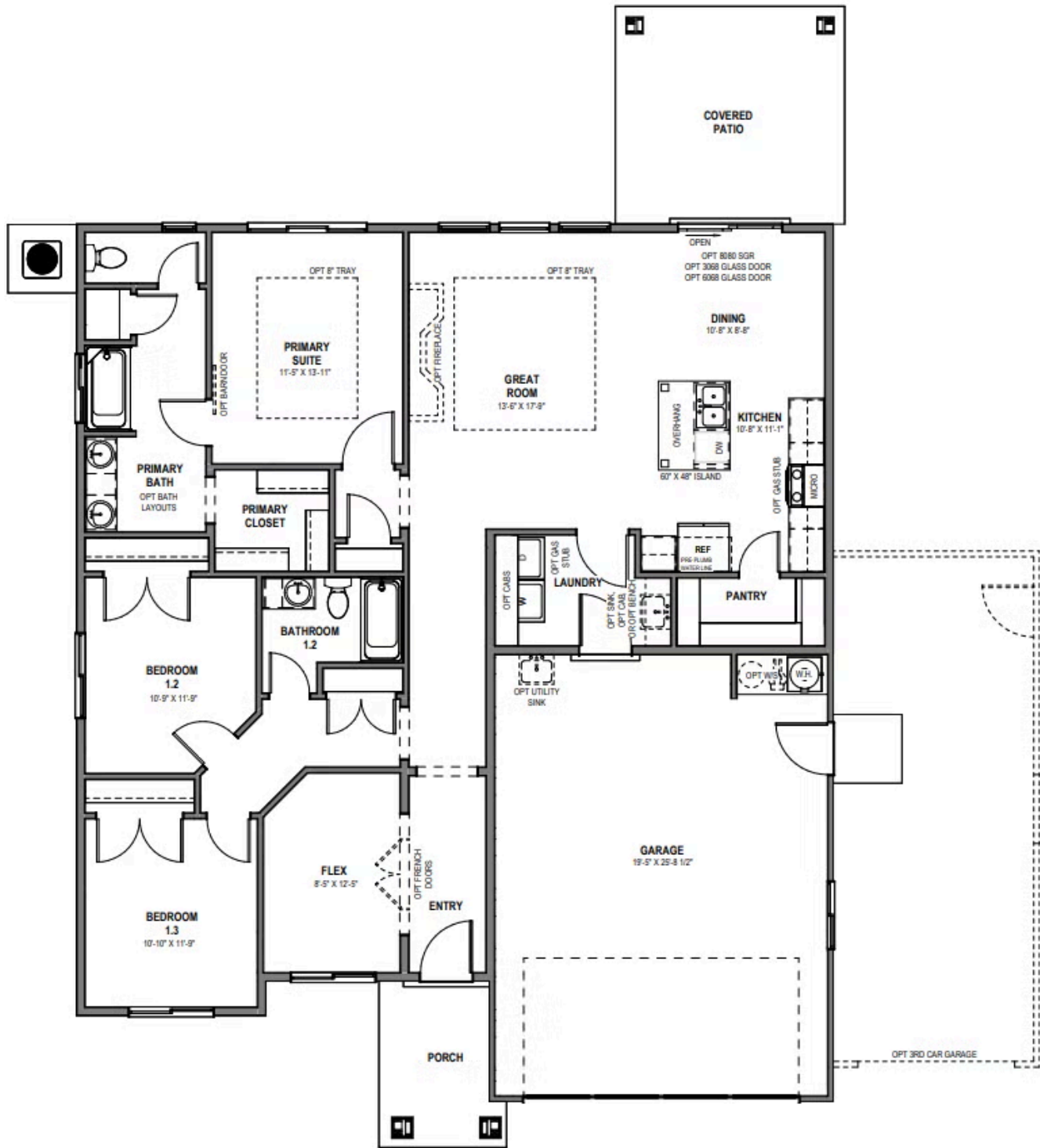
\*Visionary Homes reserves the right to change prices without notice. Approximate square footage and options shown in plan may not be included in base price.

**435.228.4702**  
[visionaryhomes.com](http://visionaryhomes.com)





www.visionaryhomes.com



\*Visionary Homes reserves the right to change prices without notice. Approximate square footage and options shown in plan may not be included in base price.