

www.visionaryhomes.com



Sale Price

\$469,990

 2,302 Sq.Ft.

 3 Bedrooms

 2 Car Garage

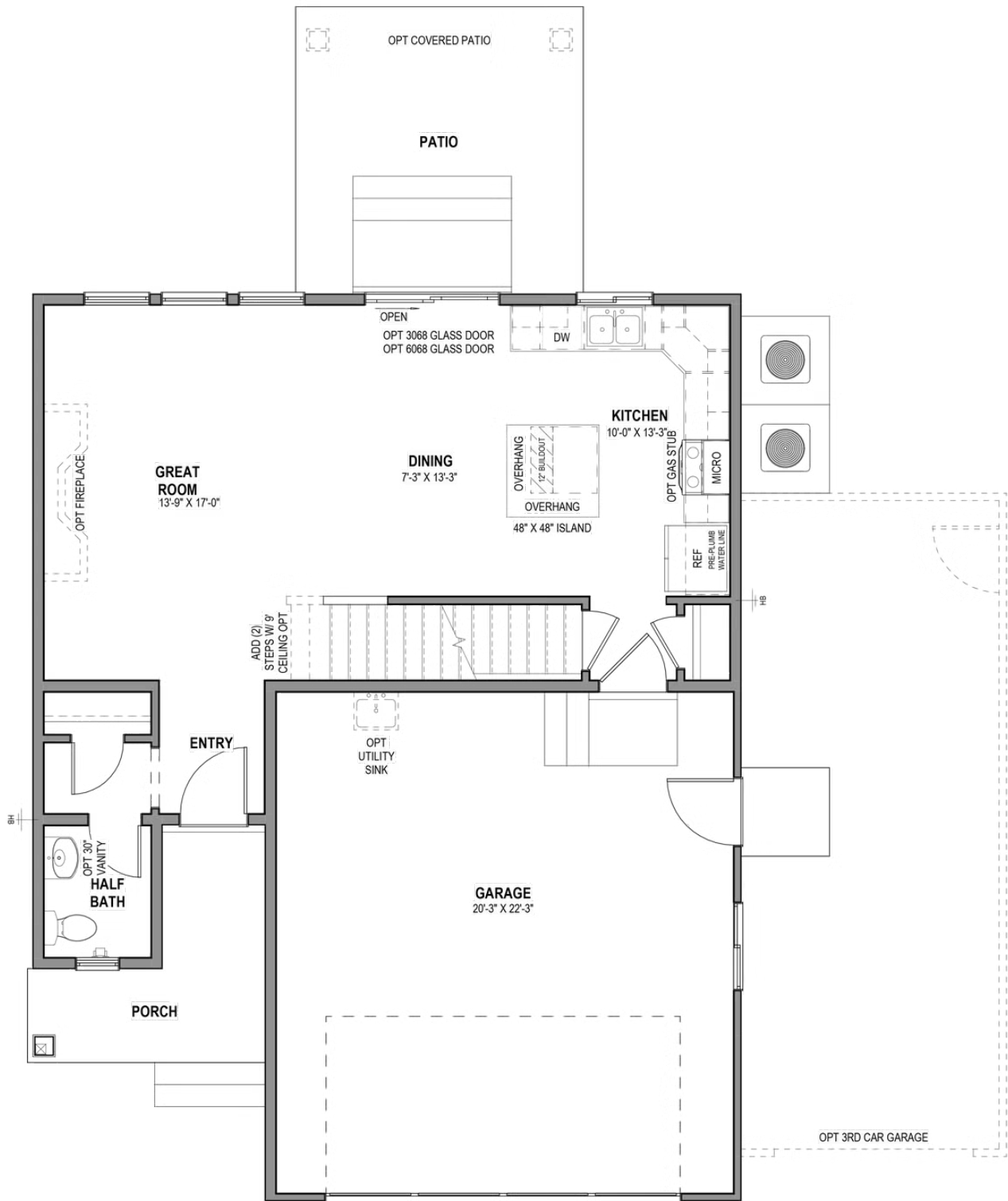
The Westminster floor plan is both cozy and stylish with 3 beds and 2.5 baths. From its modern and functional layout, with an open-concept main living space and bedrooms on the upper floor. Spend morning and evenings in the kitchen, dining, and family room as you cook, eat, and relax with your family. Upstairs, the spacious owner's suite features an owner's bath with a water closet and large walk-in closet, you'll love. A laundry room also upstairs, provides ultimate convenience for your lifestyle. This floor plan with options can include up to 4 beds and 3.5 baths.



*Visionary Homes reserves the right to change prices without notice. Approximate square footage and options shown in plan may not be included in base price.

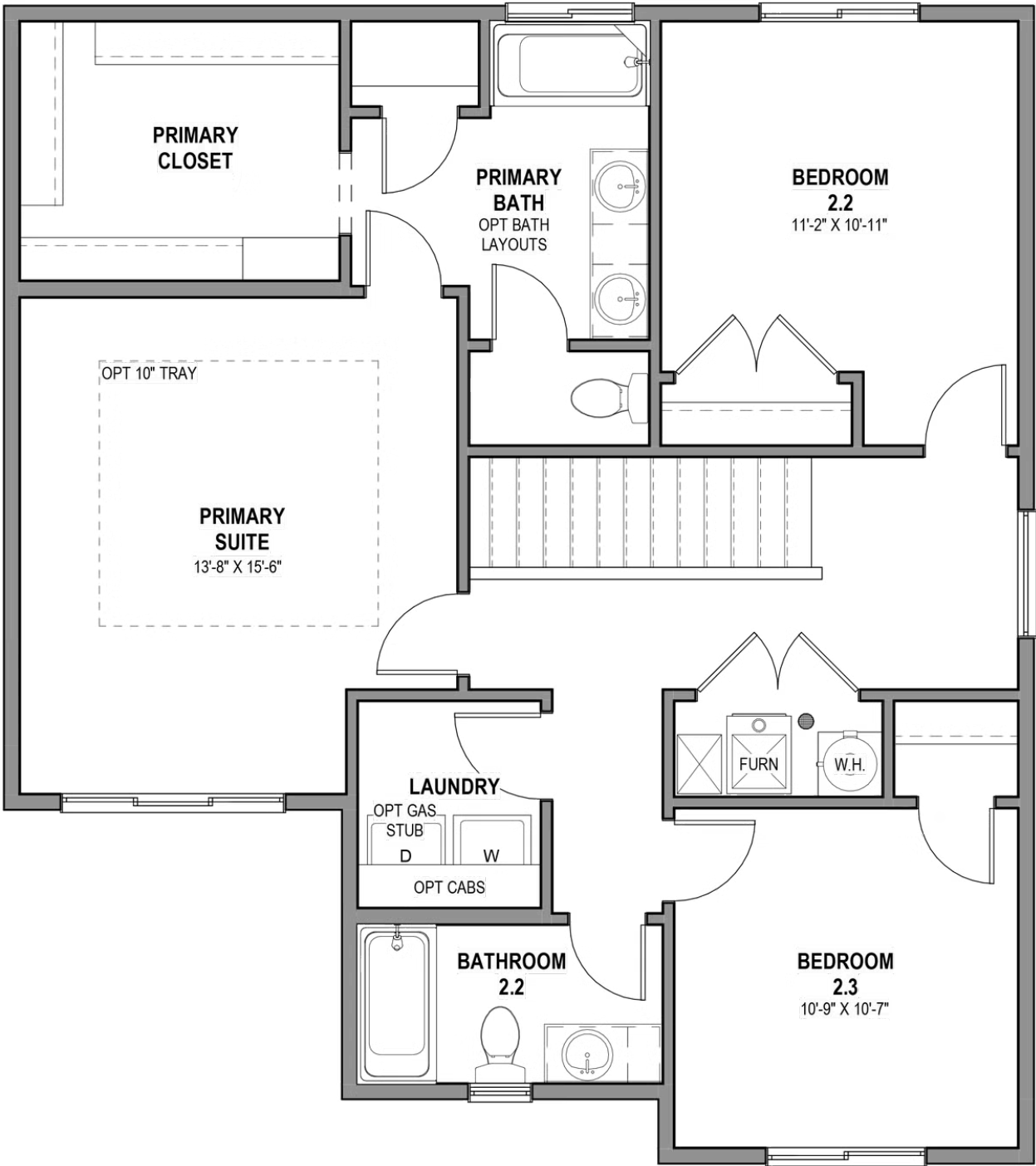
435.228.4702
visionaryhomes.com

MAIN LEVEL W/ UNFINISHED BASEMENT



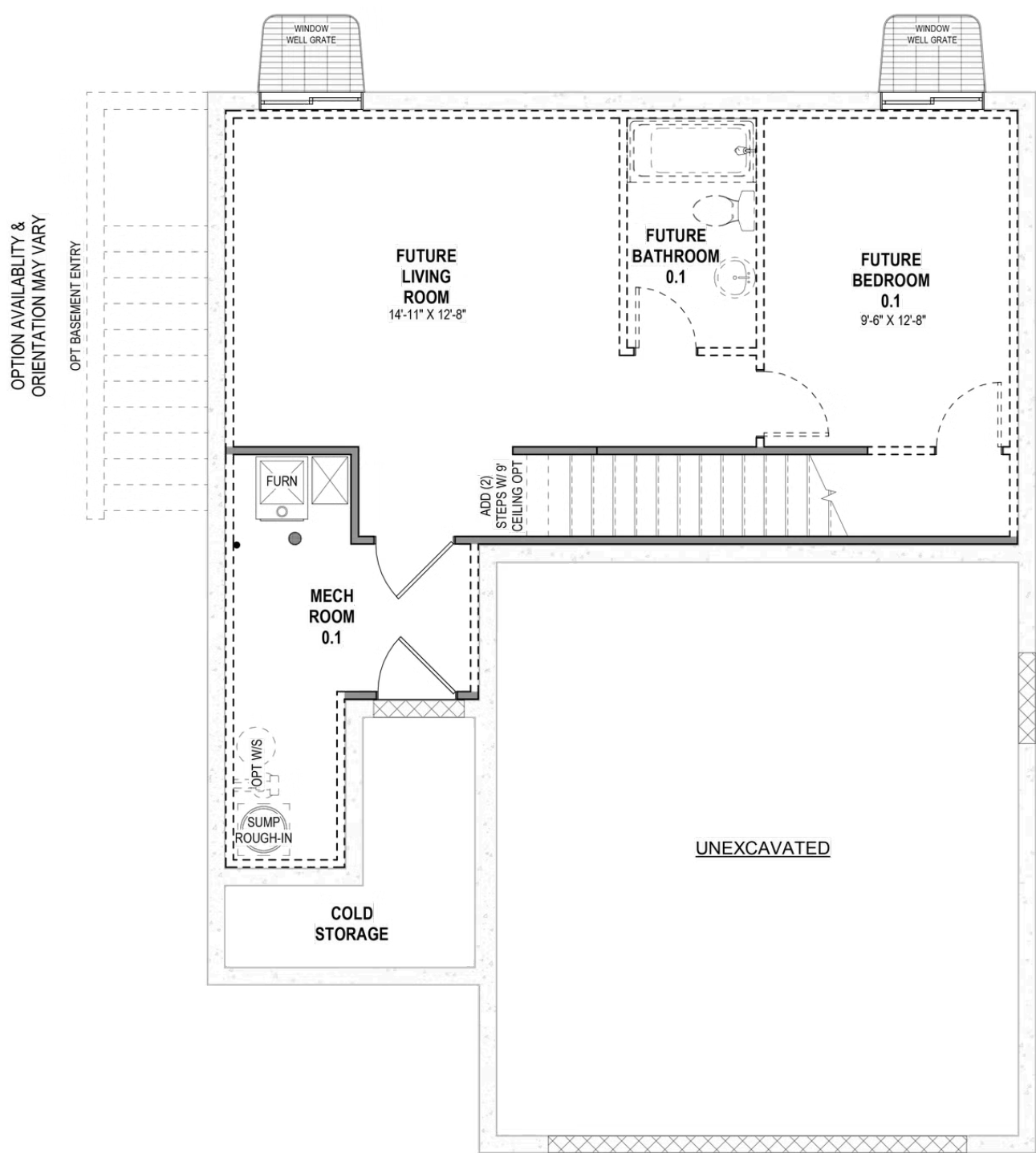
*Visionary Homes reserves the right to change prices without notice. Approximate square footage and options shown in plan may not be included in base price.

UPPER LEVEL



*Visionary Homes reserves the right to change prices without notice. Approximate square footage and options shown in plan may not be included in base price.

UNFINISHED BASEMENT



*Visionary Homes reserves the right to change prices without notice. Approximate square footage and options shown in plan may not be included in base price.