

[www.visionaryhomes.com](http://www.visionaryhomes.com)



**Sale Price**

**\$649,990**

 2,815 Sq.Ft.

 5 Bedrooms

 3 Car Garage

**705 North 200 East, Tooele, UT 84074**

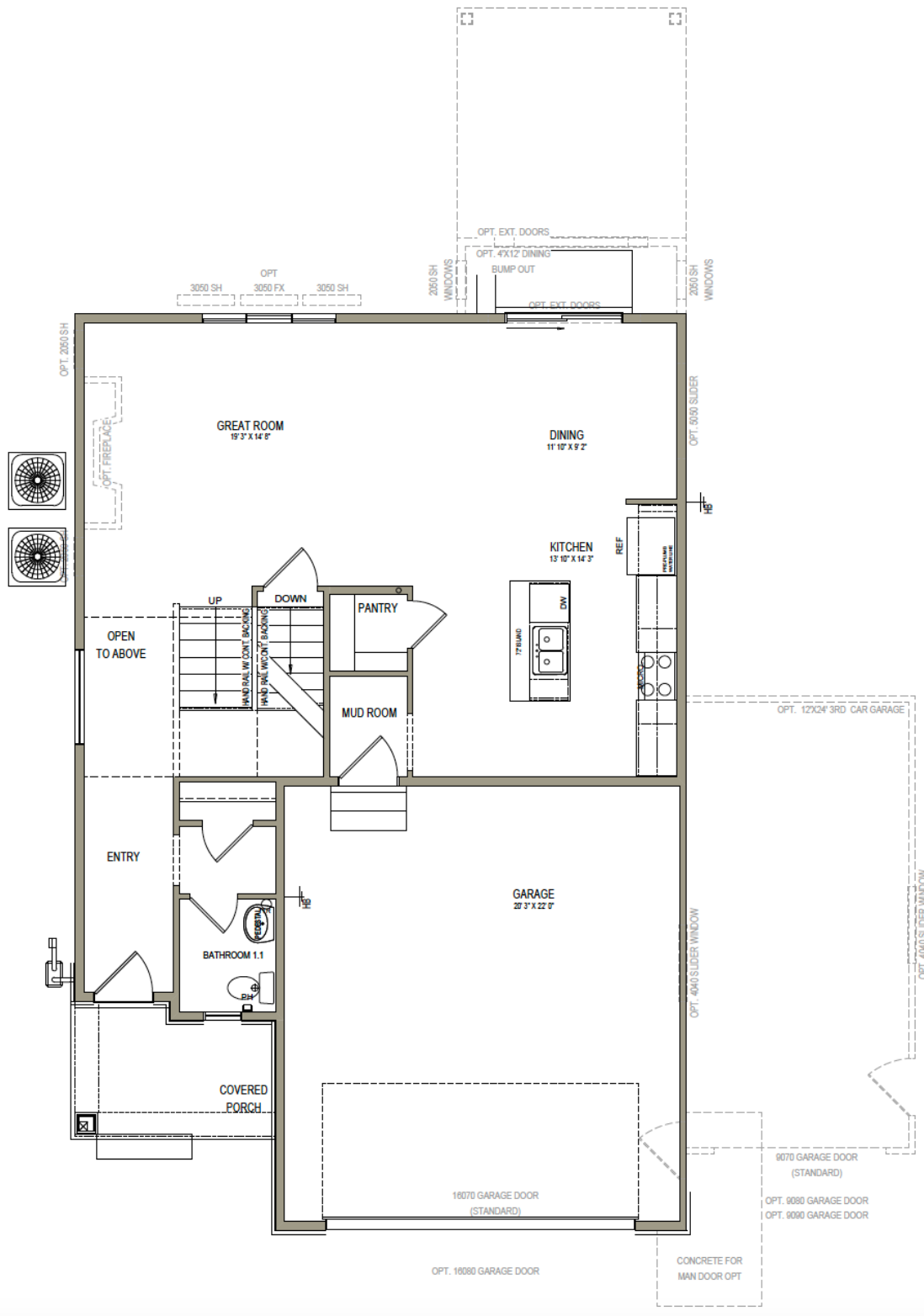
With a classic interior and exterior design, The Springhill Model Home in our Bevan Estates Community is gorgeous! Featuring 5 beds and 2.5 baths, with an open-concept layout on the main level. Walk inside and notice all the natural light that comes through the windows across from the staircase. A modern fireplace invites you into the main living space which includes the great room, dining, and kitchen. Admire the stunning details of the kitchen with a large kitchen island, pendant lights, and quartz countertops. A spacious owner's suite upstairs with ensuite bath and large walk-in closet provide the perfect space to relax and unwind. The open staircase brings in additional light to the upstairs loft space, which includes a walk-in closet for storing anything from board games to extra towels and blankets. The basement showcases additional living space with a recreation room, bedrooms, and bathroom.

**Call to Schedule a Private Tour 801-985-6448**

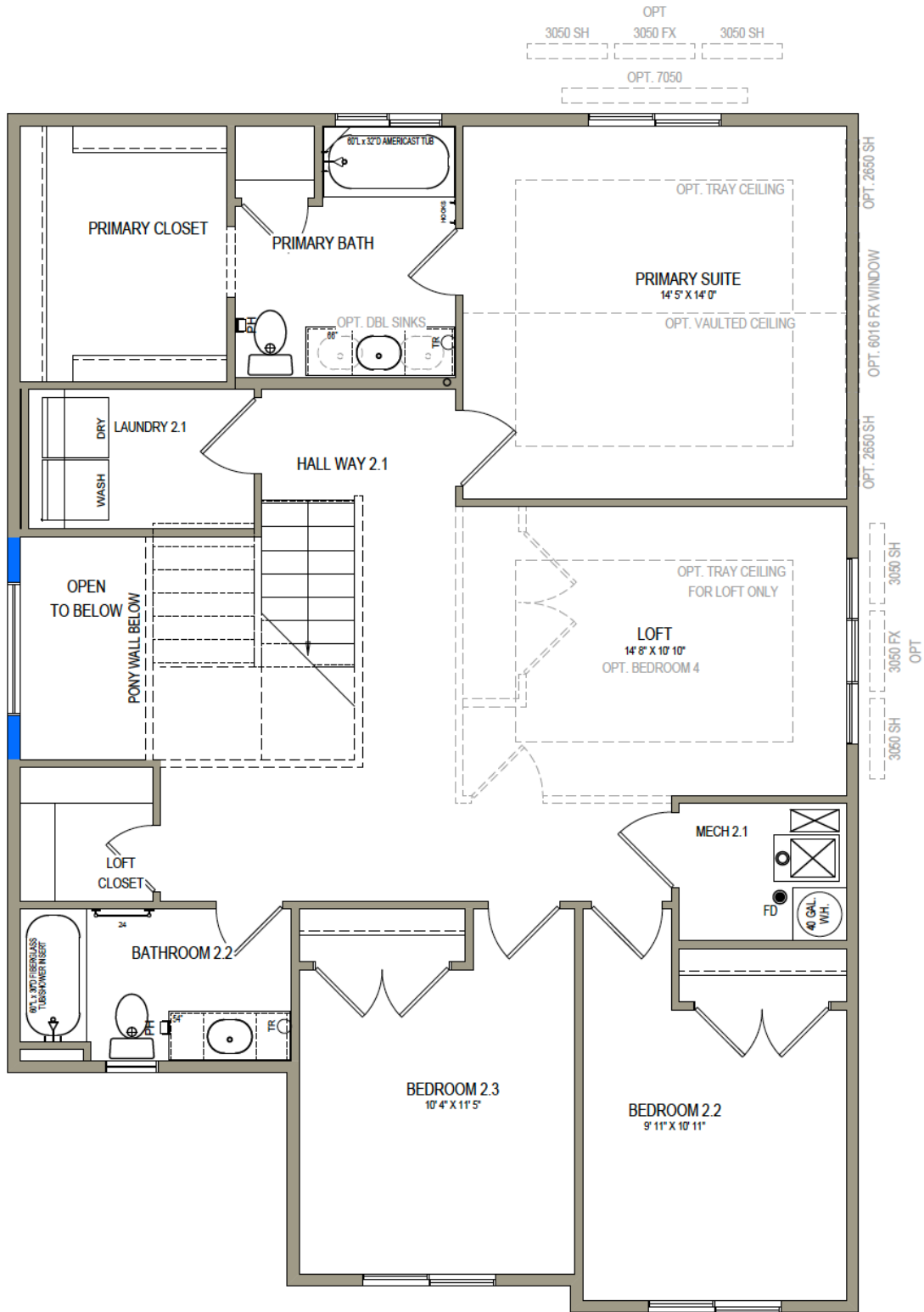


\*Visionary Homes reserves the right to change prices without notice.  
Approximate square footage and options shown in plan may not be included in base price.

**435.228.4702**  
[visionaryhomes.com](http://www.visionaryhomes.com)



\*Visionary Homes reserves the right to change prices without notice. Approximate square footage and options shown in plan may not be included in base price.



\*Visionary Homes reserves the right to change prices without notice.  
 Approximate square footage and options shown in plan may not be included in base price.

