

[www.visionaryhomes.com](http://www.visionaryhomes.com)


## Saddlewood

3 Elevations Available

 2,577 Total Sq.Ft.

 1,877 Finished Sq.Ft.

 3 - 4 Bedrooms

 2.5 - 3 Bathrooms

 2 - 3 Car Garage

Step into the timeless charm and practicality of the Saddlewood 2-story floor plan, meticulously designed to accommodate your growing family's needs for years to come. Featuring 3 beds and 2.5 baths, The Saddlewood 2-story floor plan has an open-concept main living space. The family room, kitchen, and dining area seamlessly blend together to create a warm and inviting atmosphere that fosters a sense of family connection and can also accommodate many guests. At the top of the stairs you'll discover a loft space that's open to below to the entrance for an airy and bright addition in the home. A laundry room is centered on the second floor for ultimate convenience to your weekly routine. The spacious owner's suite upstairs invites you in with its large windows, owner's bath, and spacious walk-in closet.



\*Visionary Homes reserves the right to change prices without notice. Approximate square footage and options shown in plan may not be included in base price.

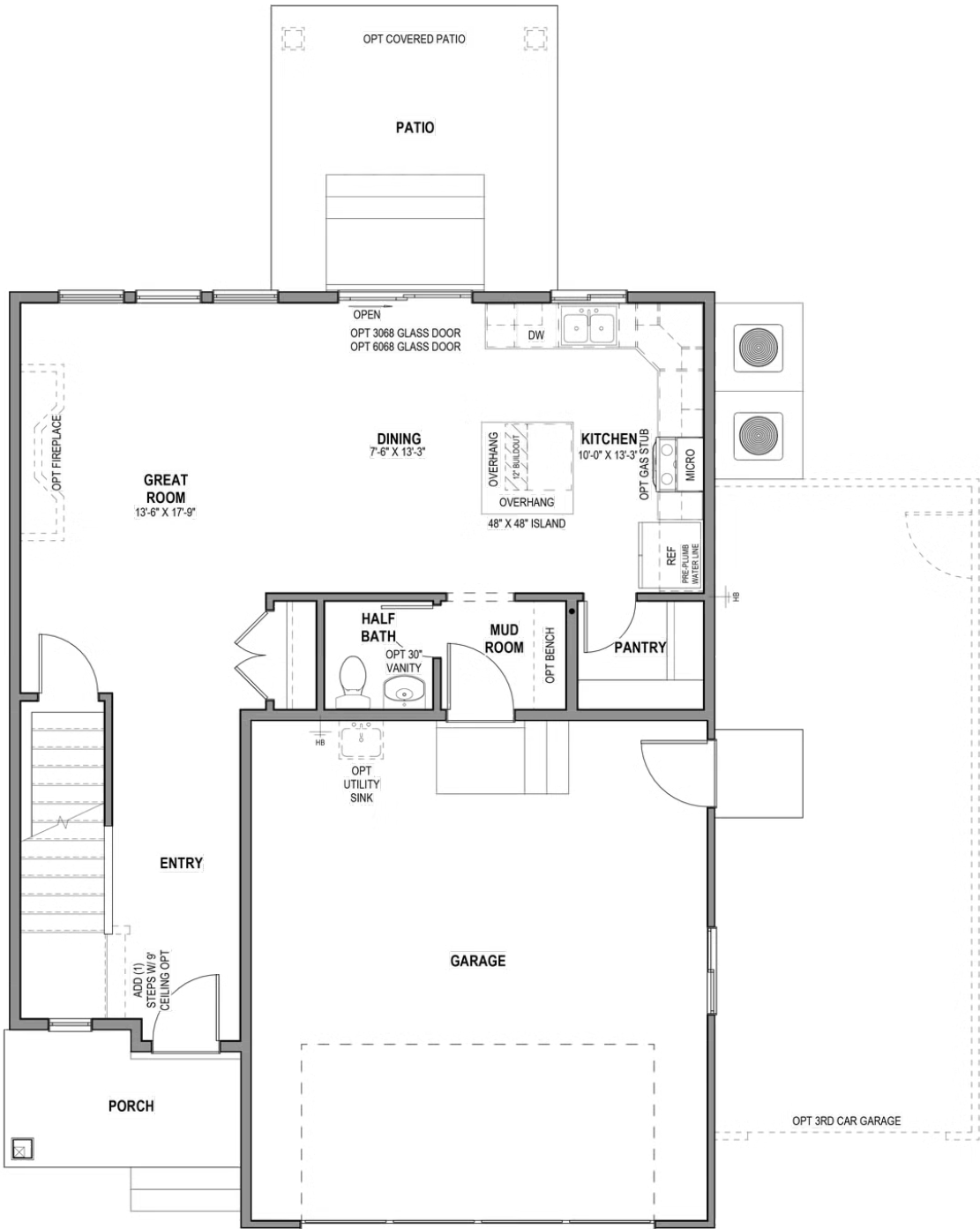
**435.228.4702**  
[visionaryhomes.com](http://visionaryhomes.com)





www.visionaryhomes.com

MAIN LEVEL W/ UNFINISHED BASEMENT

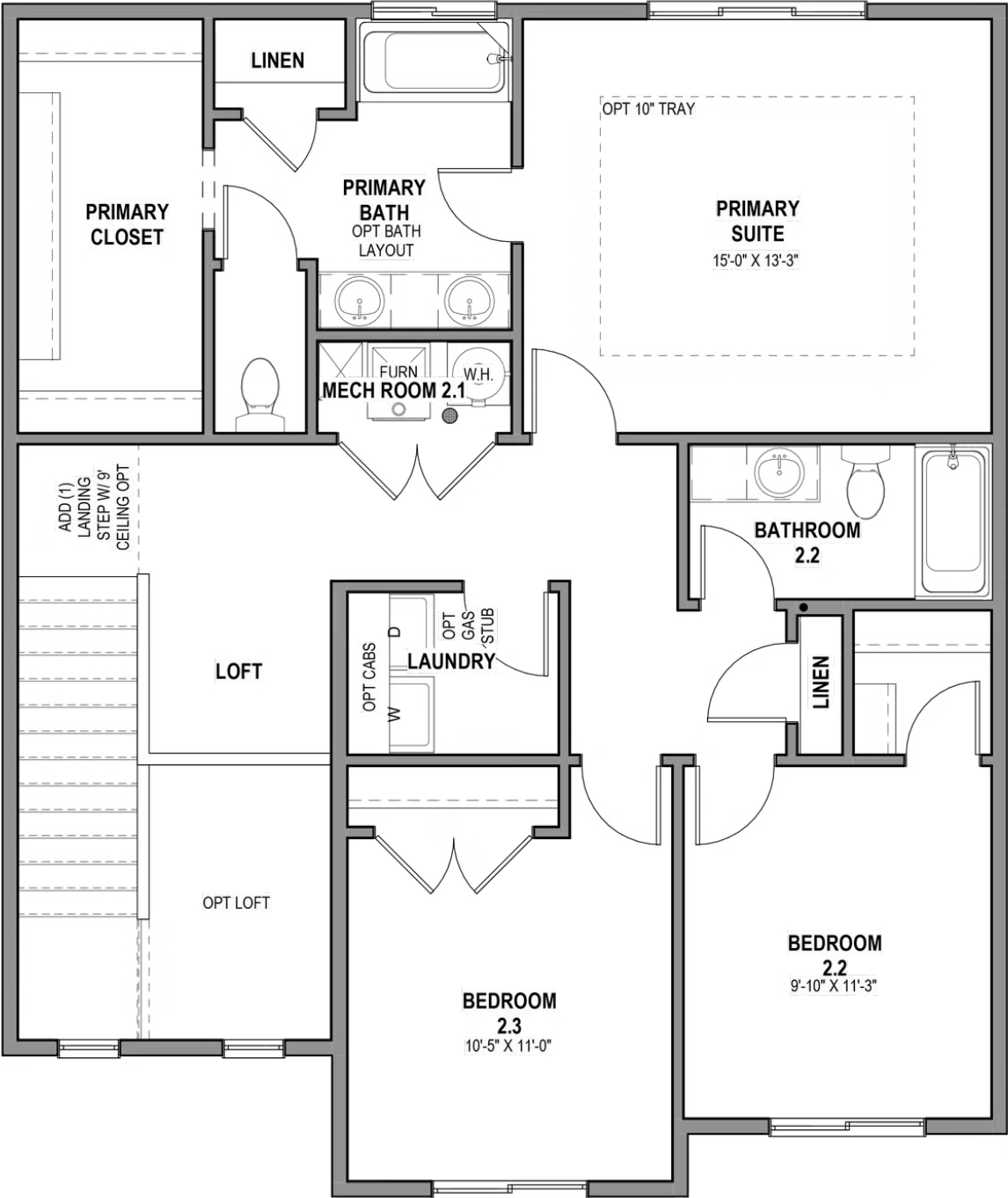


\*Visionary Homes reserves the right to change prices without notice. Approximate square footage and options shown in plan may not be included in base price.



www.visionaryhomes.com

UPPER LEVEL

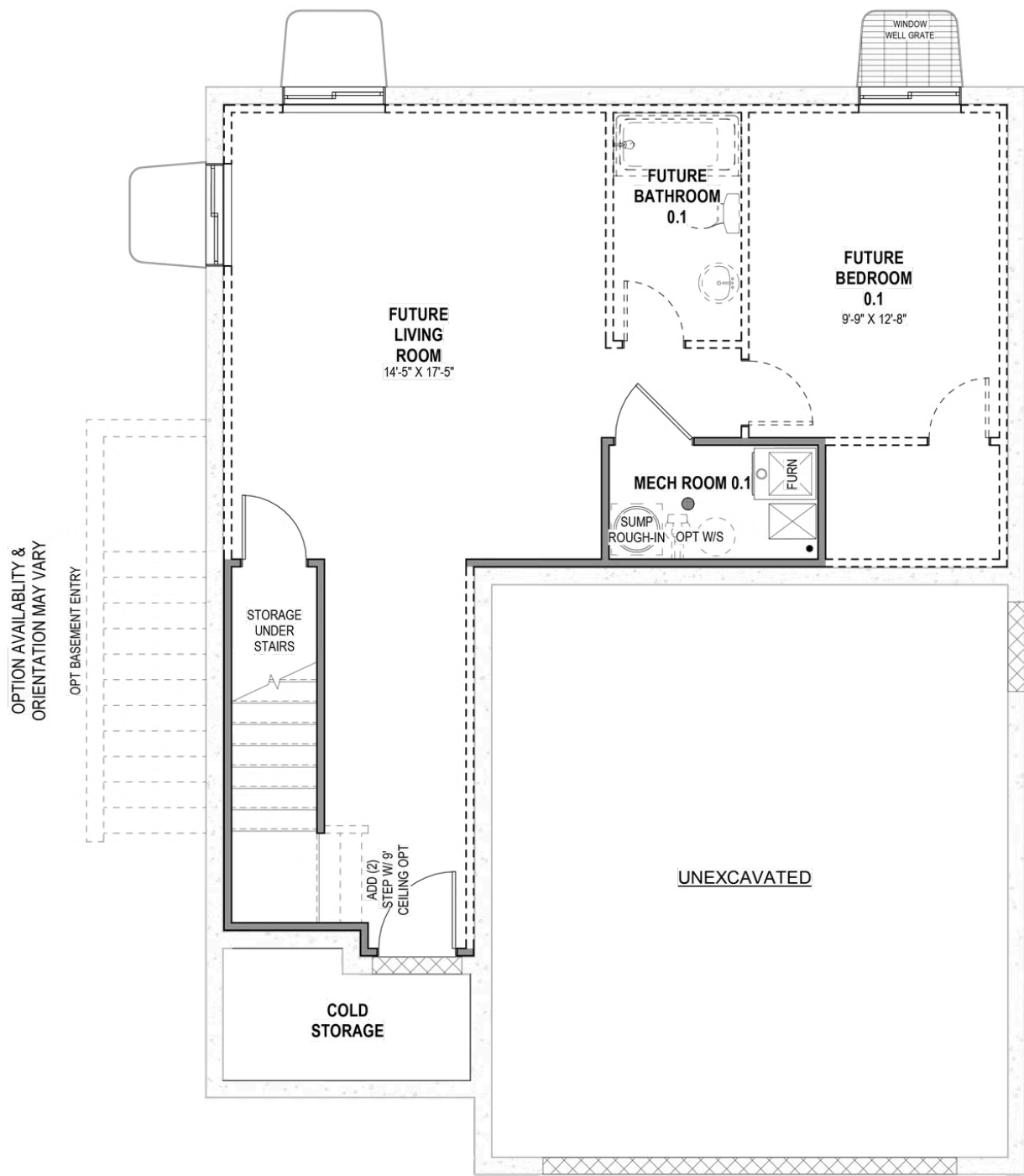


\*Visionary Homes reserves the right to change prices without notice. Approximate square footage and options shown in plan may not be included in base price.





UNFINISHED BASEMENT



\*Visionary Homes reserves the right to change prices without notice. Approximate square footage and options shown in plan may not be included in base price.