

[www.visionaryhomes.com](http://www.visionaryhomes.com)


## Springhill

3 Elevations Available

 3,055 Total Sq.Ft.

 2,216 Finished Sq.Ft.

 3 - 6 Bedrooms

 2.5 - 3 Bathrooms

 2 - 3 Car Garage

With a classic interior and exterior design, you and your family will love The Springhill 2-story floor plan. Featuring 3 beds and 2.5 baths, with an open-concept layout on the main level. Gather with family in the family room, kitchen, or dining area for movie nights, dinners spent together, and cooking. A spacious owner's suite upstairs with an owner's bath and large walk-in closet provide the perfect space to relax and unwind. The staircase open to below brings in additional light to the loft space upstairs, near the bedrooms, with a walk-in closet for storing anything from board games to extra towels and blankets.



\*Visionary Homes reserves the right to change prices without notice. Approximate square footage and options shown in plan may not be included in base price.

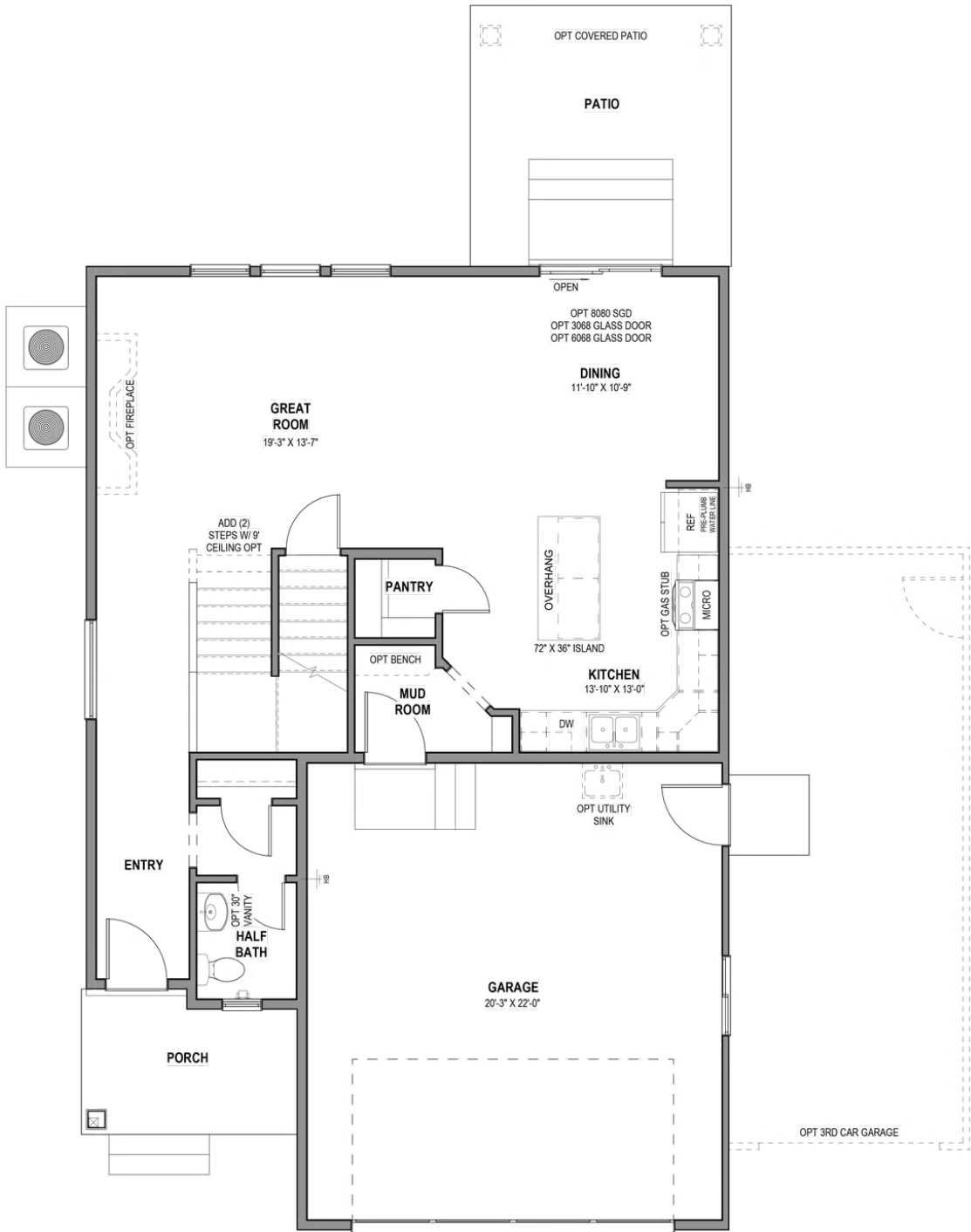
**435.228.4702**  
[visionaryhomes.com](http://visionaryhomes.com)





www.visionaryhomes.com

MAIN LEVEL W/ UNFINISHED BASEMENT

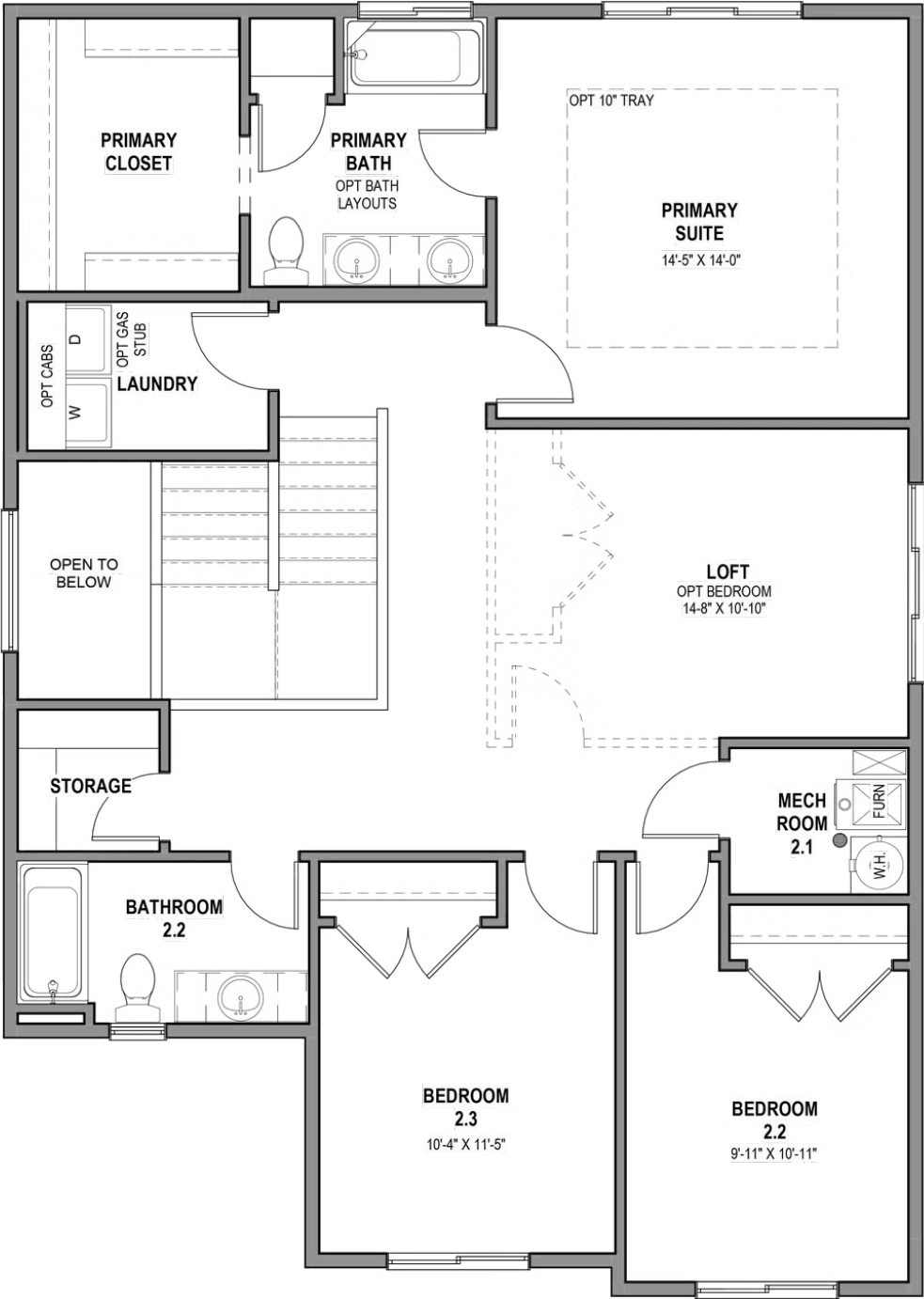


\*Visionary Homes reserves the right to change prices without notice. Approximate square footage and options shown in plan may not be included in base price.



www.visionaryhomes.com

UPPER LEVEL

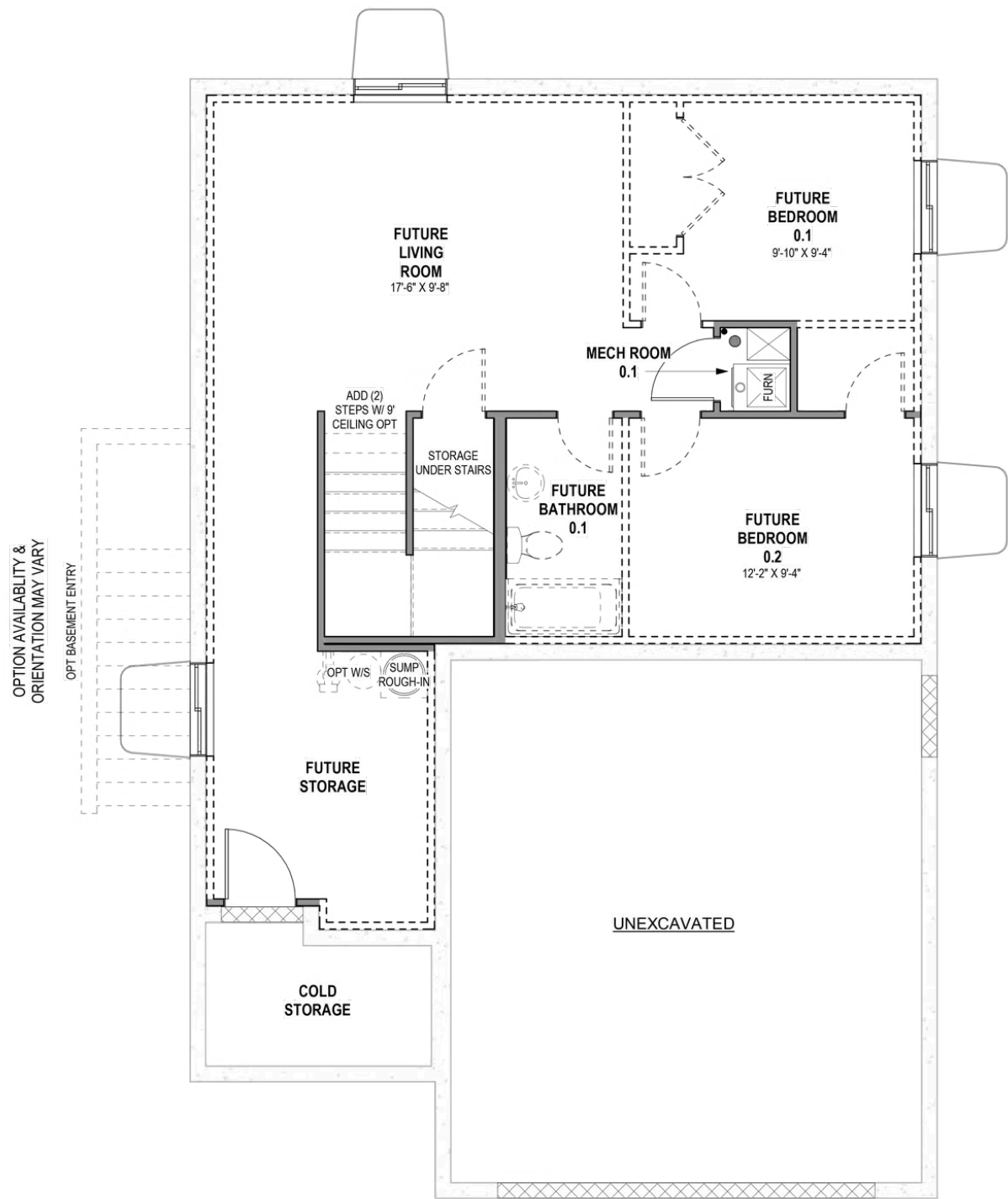


\*Visionary Homes reserves the right to change prices without notice. Approximate square footage and options shown in plan may not be included in base price.





UNFINISHED BASEMENT



\*Visionary Homes reserves the right to change prices without notice. Approximate square footage and options shown in plan may not be included in base price.