

www.visionaryhomes.com


Hilldale

3 Elevations Available

 1,195 Total Sq.Ft.

 1,195 Finished Sq.Ft.

 3 Bedrooms

 2 Bathrooms

 2 - 3 Car Garage

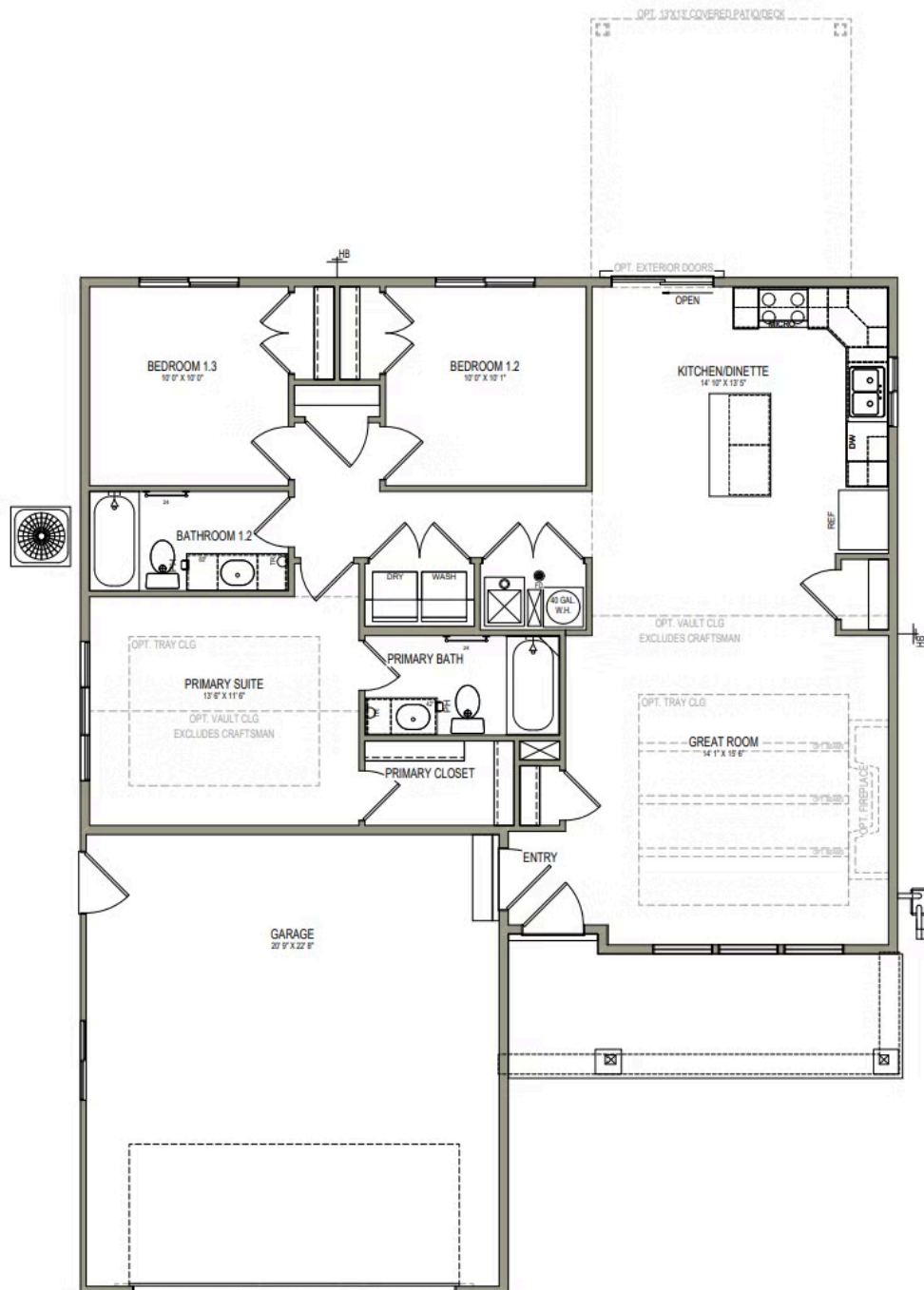
Step into timeless comfort and functionality with the Hilldale floor plan, featuring 3 bedrooms and 2 bathrooms. An open-concept living area seamlessly integrates the family room, kitchen, and dining space. Whether you're cooking up a storm, unwinding with loved ones, or hosting gatherings, this central hub facilitates every aspect of your lifestyle. A hallway off the kitchen leads conveniently into the bedrooms, laundry, and bathroom. The primary bedroom and spacious bath are away from the other rooms for a secluded, peaceful atmosphere. Each bedroom features large walk-in closets for additional space. If you're seeking a home that will accommodate the needs of you and your family for years to come, the Hilldale is just right for you!



*Visionary Homes reserves the right to change prices without notice. Approximate square footage and options shown in plan may not be included in base price.

435.228.4702
visionaryhomes.com

MAIN LEVEL SOG



435.228.4702
visionaryhomes.com