




[www.visionaryhomes.com](http://www.visionaryhomes.com)




**Sale Price**

**\$369,990**

 1,263 Sq.Ft.

 3 Bedrooms

 2 Car Garage

Welcome to your new home! This home is ready to be moved in and it is located in our beautiful Archibald Estates Active Adult community. The home sits on a .16 acre lot and is the first home on your left when you enter in the active adult section of the community. The home faces east, which allows you to see all the beautiful sunrises in your front room and the sunsets on your back patio. Just around the corner of your home is a large grassy park and pickleball court!

The interior of this home has brown cabinets and LVP floors with quartz countertops. It has an open layout with the living room flowing into the dining room and then into the kitchen. Walked down the hall and you'll find 2 bedrooms on your left and the primary bedroom on your right. The primary bedroom has its own bathroom with a zero entry shower.

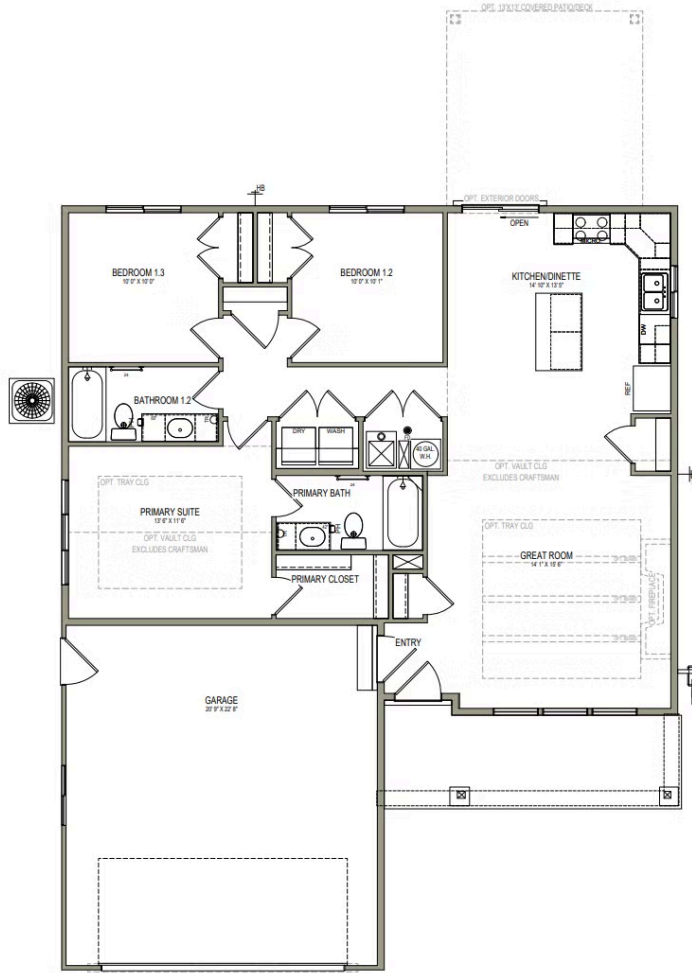
Call today for more information! 435-246-4785

\*Visionary Homes reserves the right to change prices without notice. Approximate square footage and options shown in plan may not be included in base price.

**435.228.4702**  
[visionaryhomes.com](http://visionaryhomes.com)



MAIN LEVEL SOG



\*Visionary Homes reserves the right to change prices without notice. Approximate square footage and options shown in plan may not be included in base price.