

www.visionaryhomes.com

Benton

6 Elevations Available

 1,539 Total Sq.Ft.

 3 Bedrooms

 2.5 Bathrooms

 2 Car Garage

Featuring 3 beds and 2.5 bathrooms, the Benton floor plan features abundant natural light and an open-concept family room, dining, and kitchen. A walk-in pantry and kitchen island provide plenty of space for a gourmet cooking experience. Upstairs you'll discover the owner's suite featuring an owner's bath with a spacious walk-in closet, a loft to turn into anything from a study to lounge space, bedrooms, as well as a conveniently situated laundry room.



*Visionary Homes reserves the right to change prices without notice. Approximate square footage and options shown in plan may not be included in base price.

435.228.4702
visionaryhomes.com

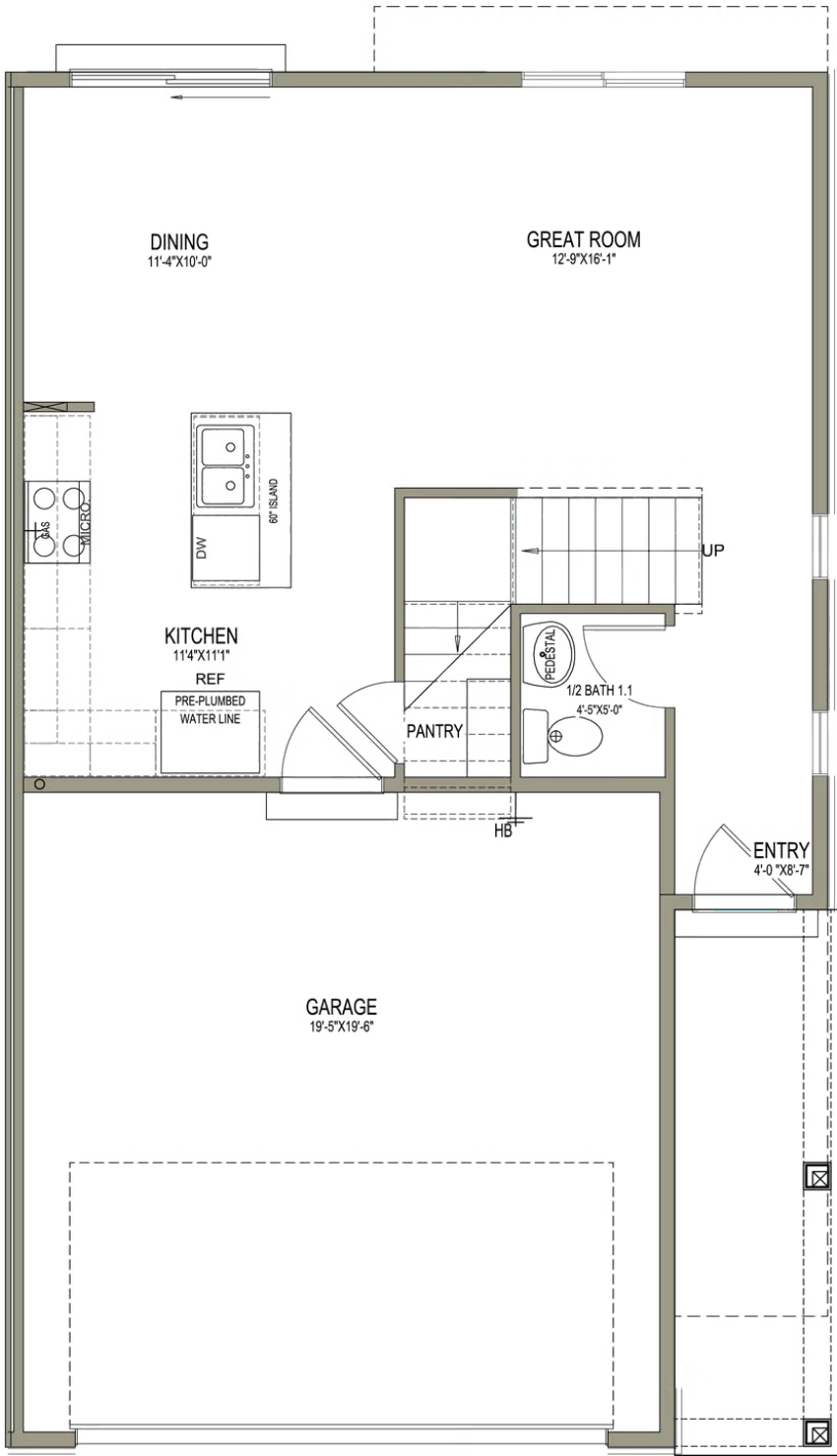
www.visionaryhomes.com





www.visionaryhomes.com

MAIN LEVEL - SLAB ON GRADE



*Visionary Homes reserves the right to change prices without notice. Approximate square footage and options shown in plan may not be included in base price.

UPPER LEVEL

