

www.visionaryhomes.com



Sale Price

\$474,900

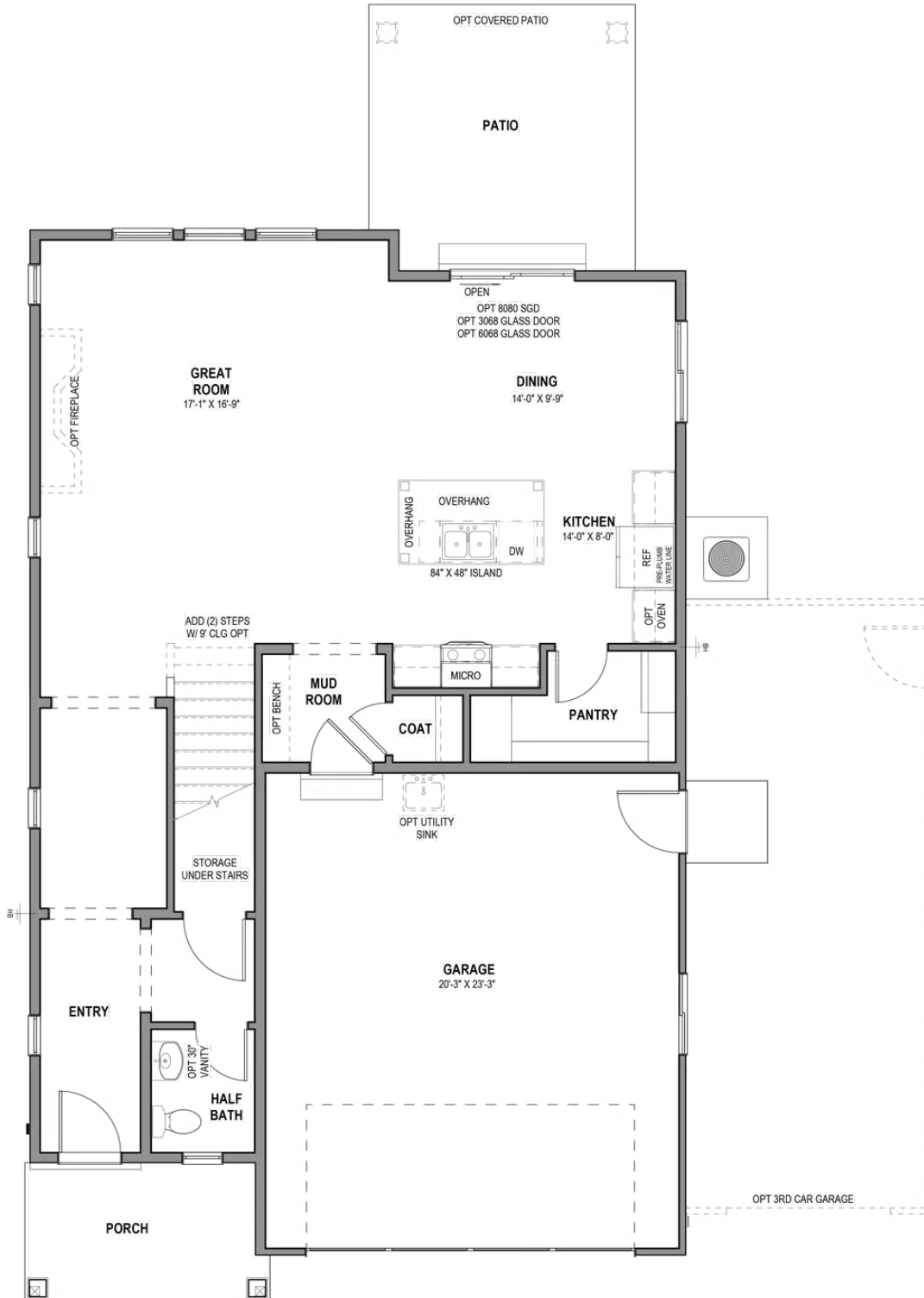
 2,485 Sq.Ft.

 4 Bedrooms

 2 Car Garage

Welcome to the Tangerine cottage plan! Walk inside to your spacious entryway with a half-bath conveniently located right off the entry. Through the entry hall you'll find a large great room, kitchen and dining areas. The kitchen features a large island with sinks and huge walk-in pantry. Nearby sits a mud room off the garage entrance. Upstairs sits a functional loft area, 3 spare bedrooms and secondary bathroom. At the end of the upstairs hallway you'll access the Primary Suite, with large ensuite bathroom and walk-in closet. Make this spacious cottage plan yours today!

MAIN LEVEL - SLAB ON GRADE



UPPER LEVEL

