

[www.visionaryhomes.com](http://www.visionaryhomes.com)


## Sumac

3 Elevations Available

 3,895 Total Sq.Ft.

 2,537 Finished Sq.Ft.

 4 Bedrooms

 2.5 Bathrooms

 2 - 3 Car Garage

Everything about the Sumac floor plan is designed to give you and your family maximum comfort, with 4 bedrooms and 2.5 bathrooms. Floor to ceiling windows in the family room bring plenty of natural light into the space for a bright and cozy atmosphere. A walk-in pantry and island to the kitchen provide both storage and counter space for all your cooking needs. Up the stairs, an open loft balcony invites the light in from the family room floor to ceiling windows, creating the perfect ambiance for a lounge or study space. Situated on the main level for privacy away from the upstairs bedrooms, the primary bedroom features gorgeous windows, a spacious bath, and walk-in closet with a window for natural light. The three additional bedrooms are situated upstairs, all with plenty of space and two with walk-in closets. An unfinished basement provides potential for additional living space.



Elevation 1



Elevation 2



Elevation 3 (Garage)

\*Visionary Homes reserves the right to change prices without notice. Approximate square footage and options shown in plan may not be included in base price.

435.228.4702  
visionaryhomes.com





www.visionaryhomes.com

MAIN LEVEL W/ UNFINISHED BASEMENT

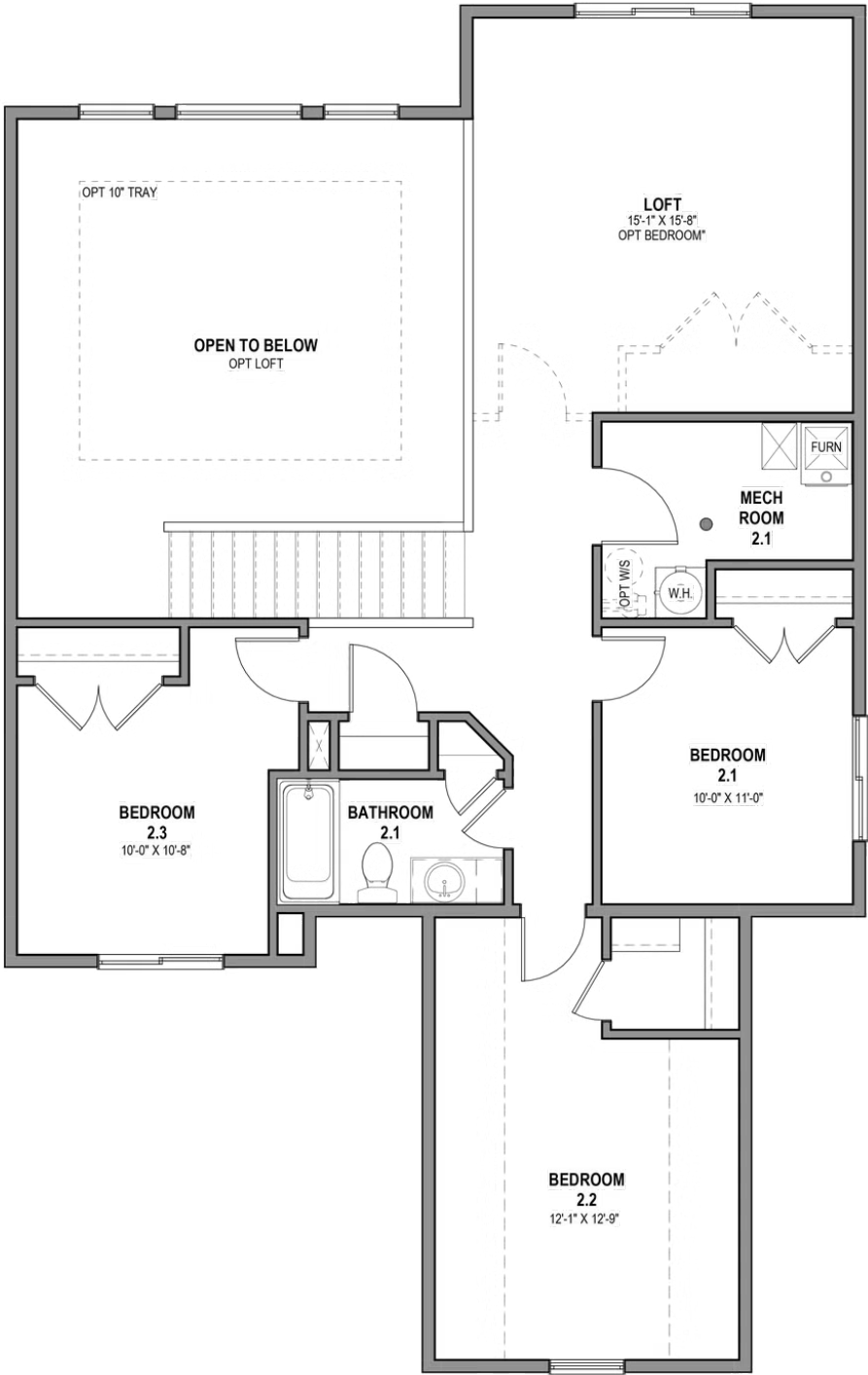


\*Visionary Homes reserves the right to change prices without notice. Approximate square footage and options shown in plan may not be included in base price.



www.visionaryhomes.com

UPPER LEVEL



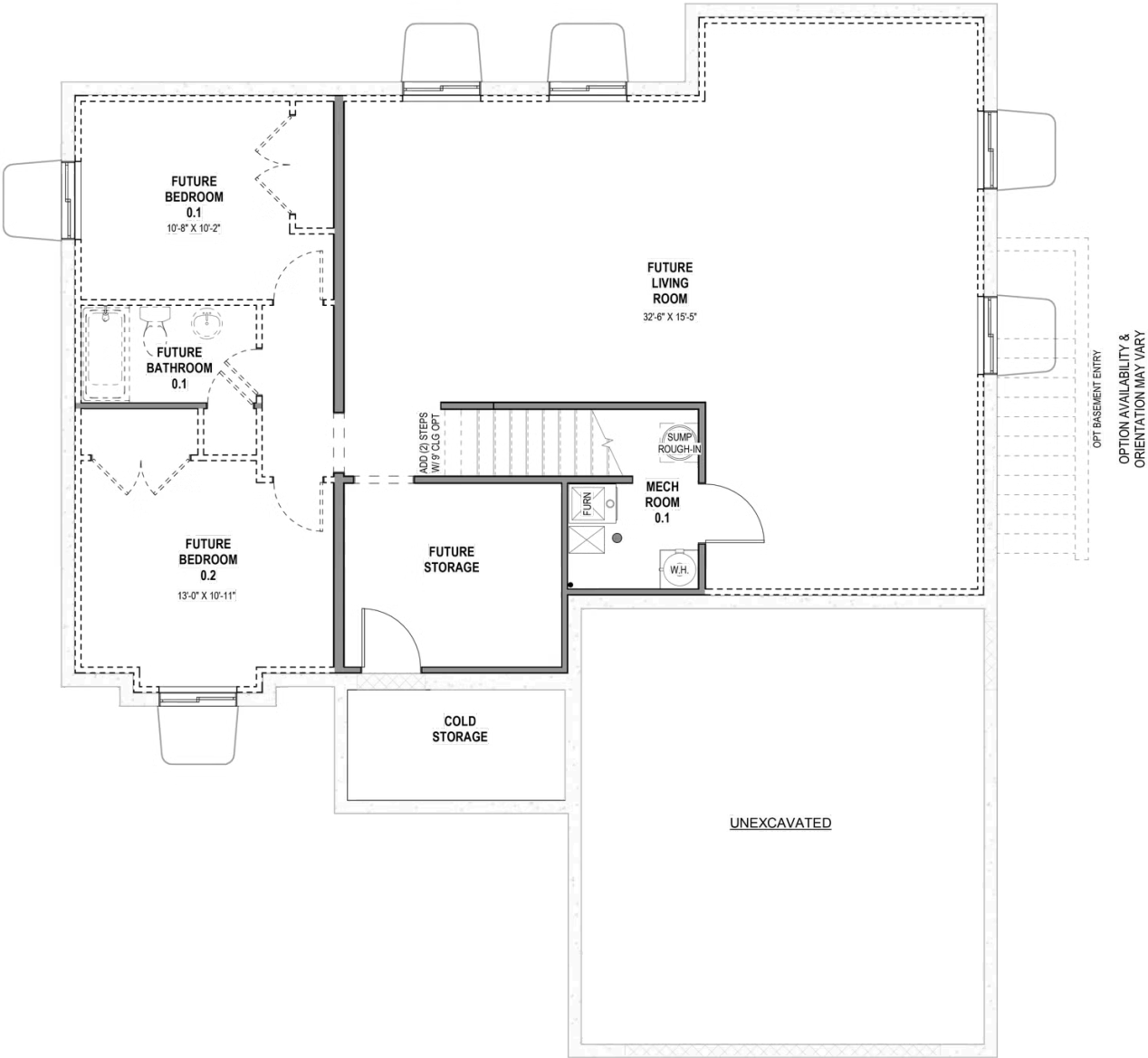
\*Visionary Homes reserves the right to change prices without notice. Approximate square footage and options shown in plan may not be included in base price.





www.visionaryhomes.com

UNFINISHED BASEMENT



\*Visionary Homes reserves the right to change prices without notice. Approximate square footage and options shown in plan may not be included in base price.