

www.visionaryhomes.com


Summerlyn

3 Elevations Available

 3,709 Total Sq.Ft.

 1,885 Finished Sq.Ft.

 3 Bedrooms

 2.5 Bathrooms

 2 - 3 Car Garage

One of our most popular floor plans, the Summerlyn's beautiful layout perfectly meets the needs of families looking for more space. Featuring 3 bedrooms and 2.5 bathrooms, the open concept floor plan features floor to ceiling windows that cast natural light over the living room, dining room, and kitchen. The gourmet kitchen is a culinary enthusiast's dream, complete with a large walk-in pantry. The dining and family room connect with the kitchen for you and your family to enjoy cooking, eating, and watching movies. Thoughtful touches abound throughout this floor plan, with ample closet space ensuring that organization is effortless and stylish. The exquisite primary bedroom features a luxurious primary bath and a spacious walk-in closet. An unfinished basement provides potential for additional living space.



*Visionary Homes reserves the right to change prices without notice. Approximate square footage and options shown in plan may not be included in base price.

435.228.4702
visionaryhomes.com



www.visionaryhomes.com

MAIN LEVEL W/ UNFINISHED BASEMENT

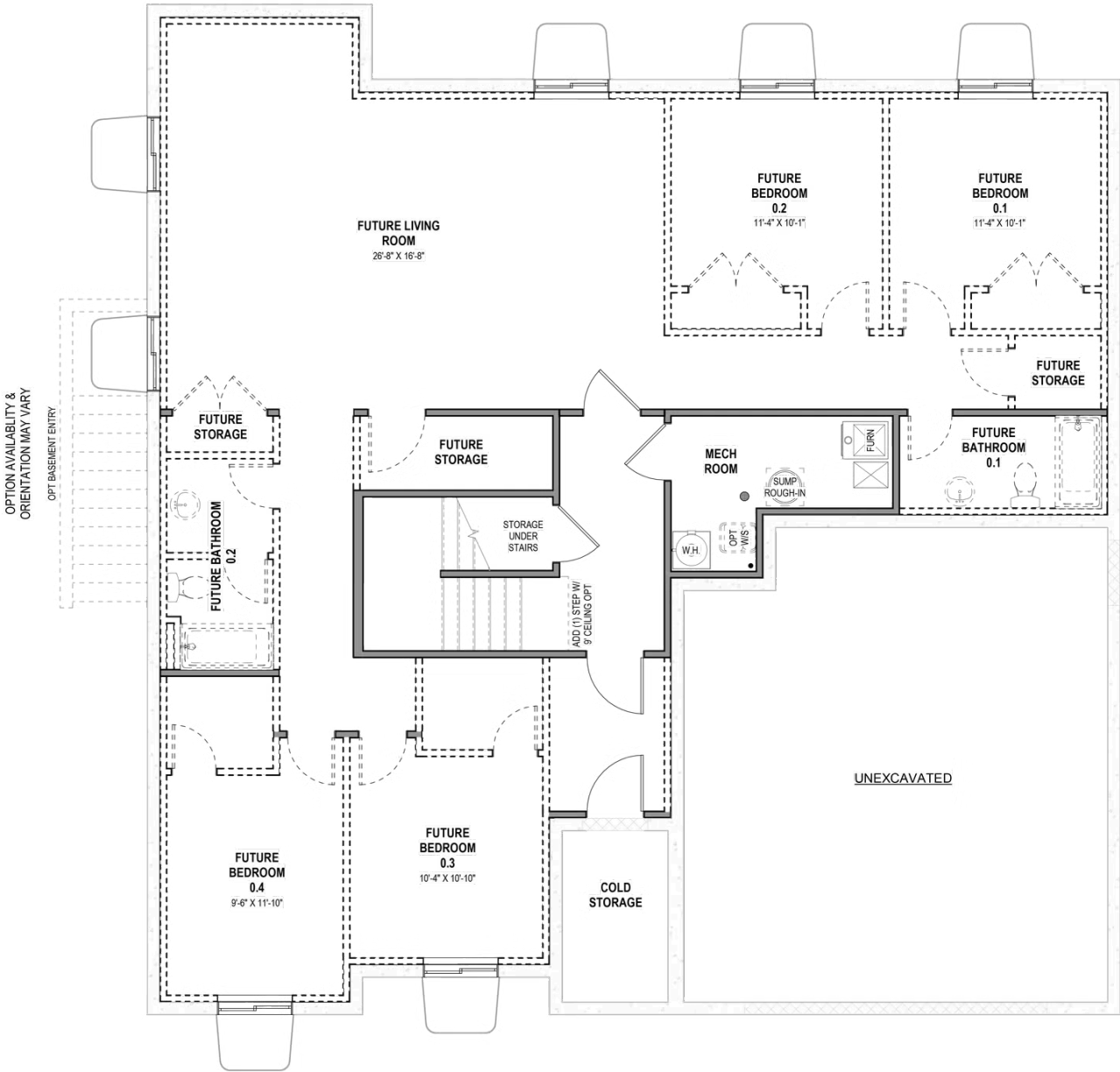


*Visionary Homes reserves the right to change prices without notice. Approximate square footage and options shown in plan may not be included in base price.



www.visionaryhomes.com

UNFINISHED BASEMENT



*Visionary Homes reserves the right to change prices without notice. Approximate square footage and options shown in plan may not be included in base price.