







[www.visionaryhomes.com](http://www.visionaryhomes.com)



# Bosa

5 Elevations Available

-  2,043 Total Sq.Ft.
-  3 - 4 Bedrooms
-  2.5 Bathrooms
-  2 - 3 Car Garage

The Bosa blends modern comfort with the natural beauty of southern Utah. With 3 bedrooms, a flex room, 2.5 bathrooms, and a vaulted ceiling that opens to the second floor, this home feels airy, bright, and spacious. The living room flows into the dining area and open kitchen, featuring a large island and walk-in pantry. Upstairs, a central loft overlooks the main living area, while the primary suite offers a peaceful retreat with a walk-in closet and spa-like bath. Two additional bedrooms share a full bathroom, and a covered back patio completes this thoughtfully designed home.



Elevation 1 - Side View



Elevation 2 - Front View



Elevation 3 - Side View

\*Visionary Homes reserves the right to change prices without notice. Approximate square footage and options shown in plan may not be included in base price.

[www.visionaryhomes.com](http://www.visionaryhomes.com)



Desert Craftsman



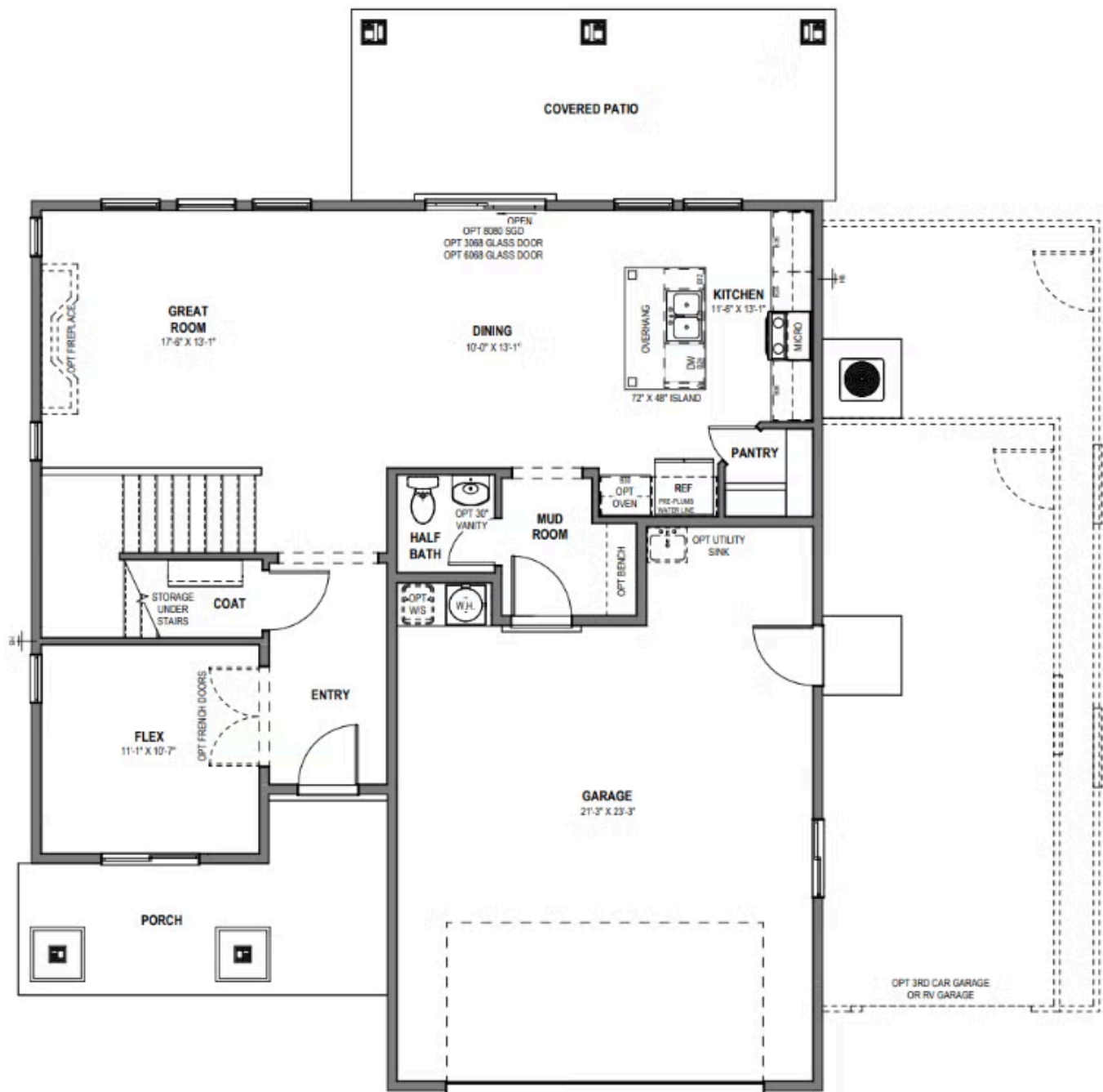
Desert Modern





www.visionaryhomes.com

MAIN LEVEL - SLAB ON GRADE



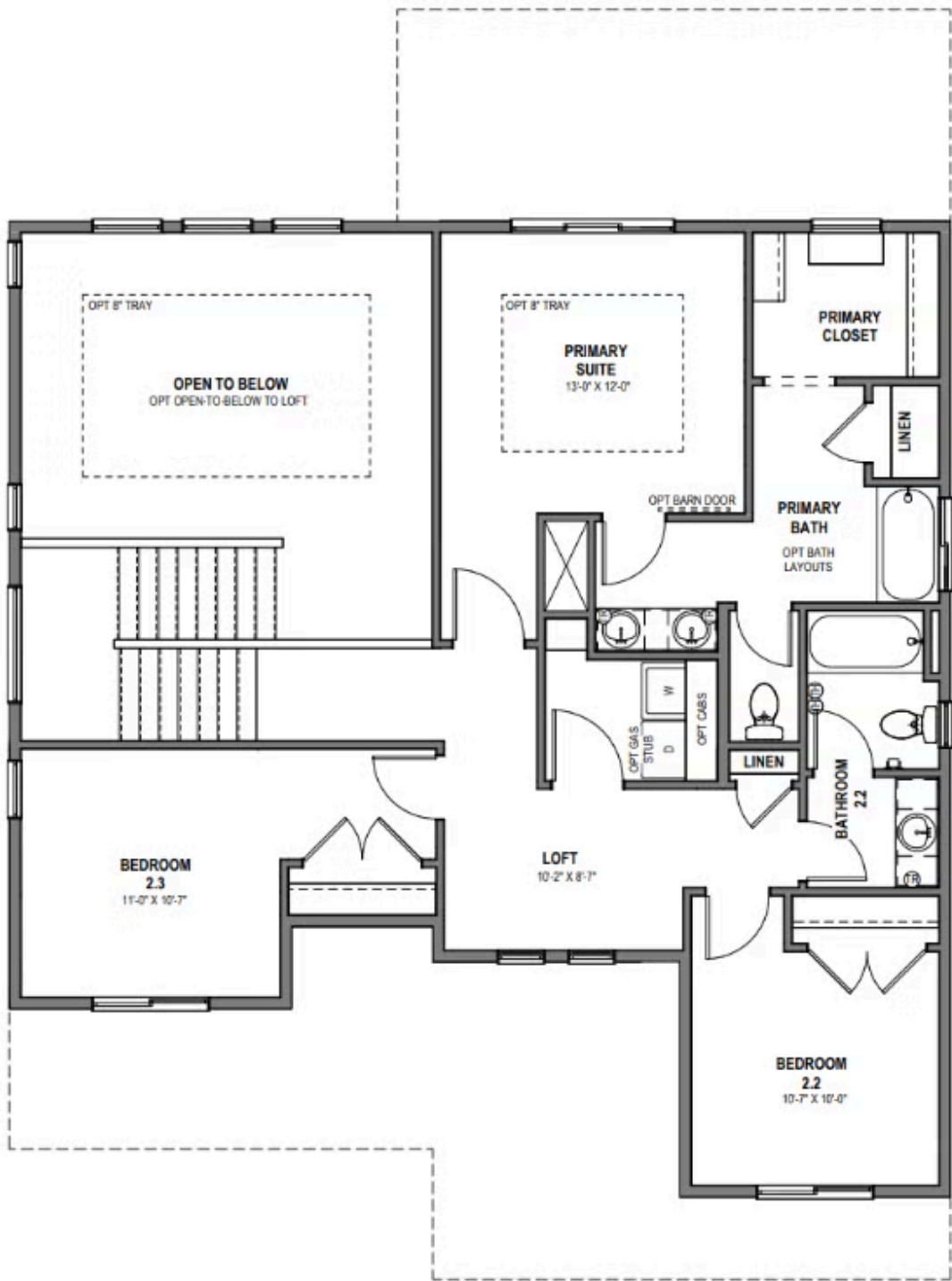
\*Visionary Homes reserves the right to change prices without notice. Approximate square footage and options shown in plan may not be included in base price.





www.visionaryhomes.com

UPPER LEVEL



\*Visionary Homes reserves the right to change prices without notice. Approximate square footage and options shown in plan may not be included in base price.