

www.visionaryhomes.com


Senna

3 Elevations Available

 1,491 Total Sq.Ft.

 4 Bedrooms

 2.5 Bathrooms

 2 Car Garage

The Senna townhome floor plan is a spacious and versatile design featuring four bedrooms, two and a half bathrooms, and thoughtfully crafted living spaces across two levels. The main level offers an open-concept layout with a bright kitchen featuring an island, seamlessly flowing into the dining area and the generously sized great room, perfect for entertaining. A half bath and direct access to a two-car garage enhance convenience, while a covered patio provides additional space for outdoor relaxation. Upstairs, the primary suite is a serene retreat with a large bedroom, an expansive walk-in closet, and a bright and airy ensuite bath. Three additional bedrooms, a shared full bathroom, and a dedicated laundry room provide practicality and comfort for family living. The Senna's functional design and modern amenities make it ideal for a variety of lifestyles.



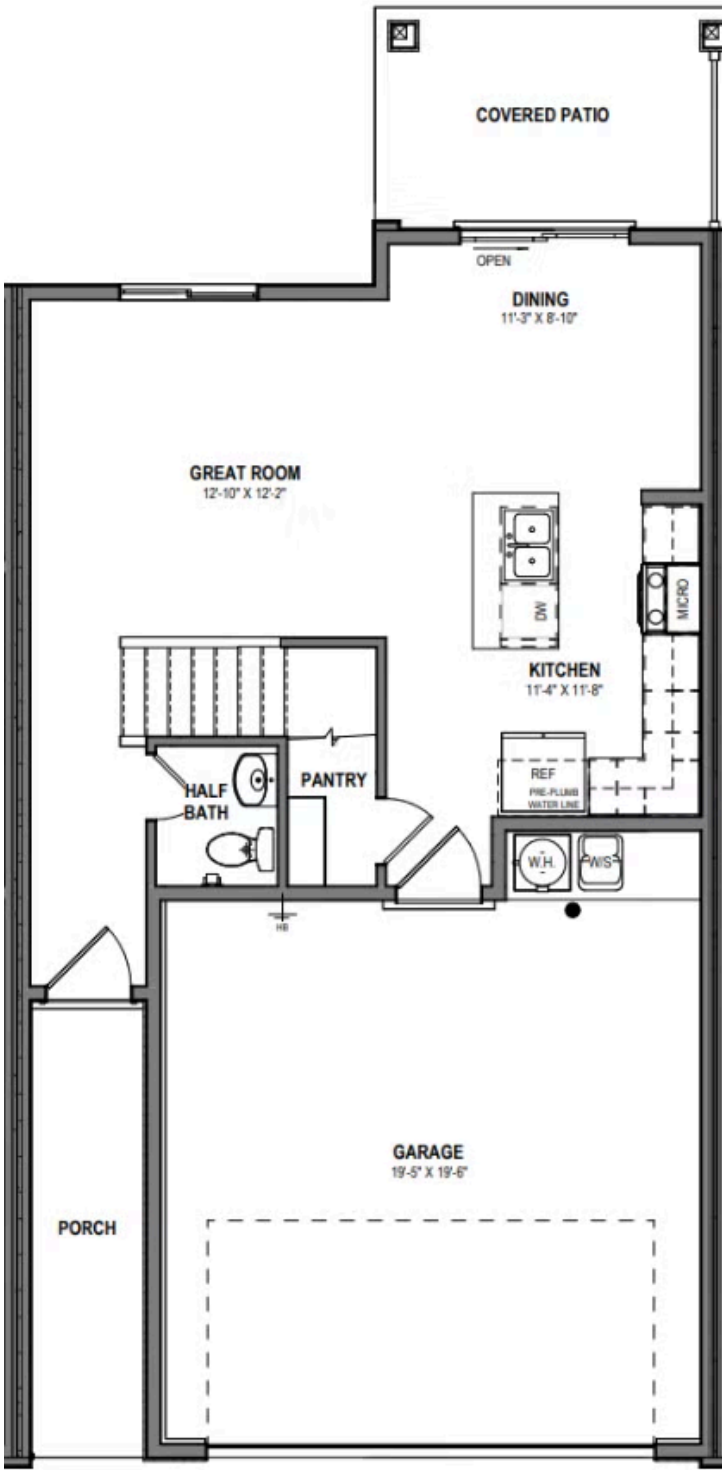
*Visionary Homes reserves the right to change prices without notice. Approximate square footage and options shown in plan may not be included in base price.

435.228.4702
visionaryhomes.com



www.visionaryhomes.com

MAIN LEVEL - SLAB ON GRADE



*Visionary Homes reserves the right to change prices without notice. Approximate square footage and options shown in plan may not be included in base price.

www.visionaryhomes.com

UPPER LEVEL

