







www.visionaryhomes.com



Bosa

5 Elevations Available

-  2,043 Total Sq.Ft.
-  3 - 4 Bedrooms
-  2.5 Bathrooms
-  2 - 3 Car Garage

The Bosa blends modern comfort with the natural beauty of southern Utah. With 3 bedrooms, a flex room, 2.5 bathrooms, and a vaulted ceiling that opens to the second floor, this home feels airy, bright, and spacious. The living room flows into the dining area and open kitchen, featuring a large island and walk-in pantry. Upstairs, a central loft overlooks the main living area, while the primary suite offers a peaceful retreat with a walk-in closet and spa-like bath. Two additional bedrooms share a full bathroom, and a covered back patio completes this thoughtfully designed home.



Elevation 1



Elevation 2



Elevation 3

*Visionary Homes reserves the right to change prices without notice. Approximate square footage and options shown in plan may not be included in base price.

www.visionaryhomes.com



Desert Craftsman

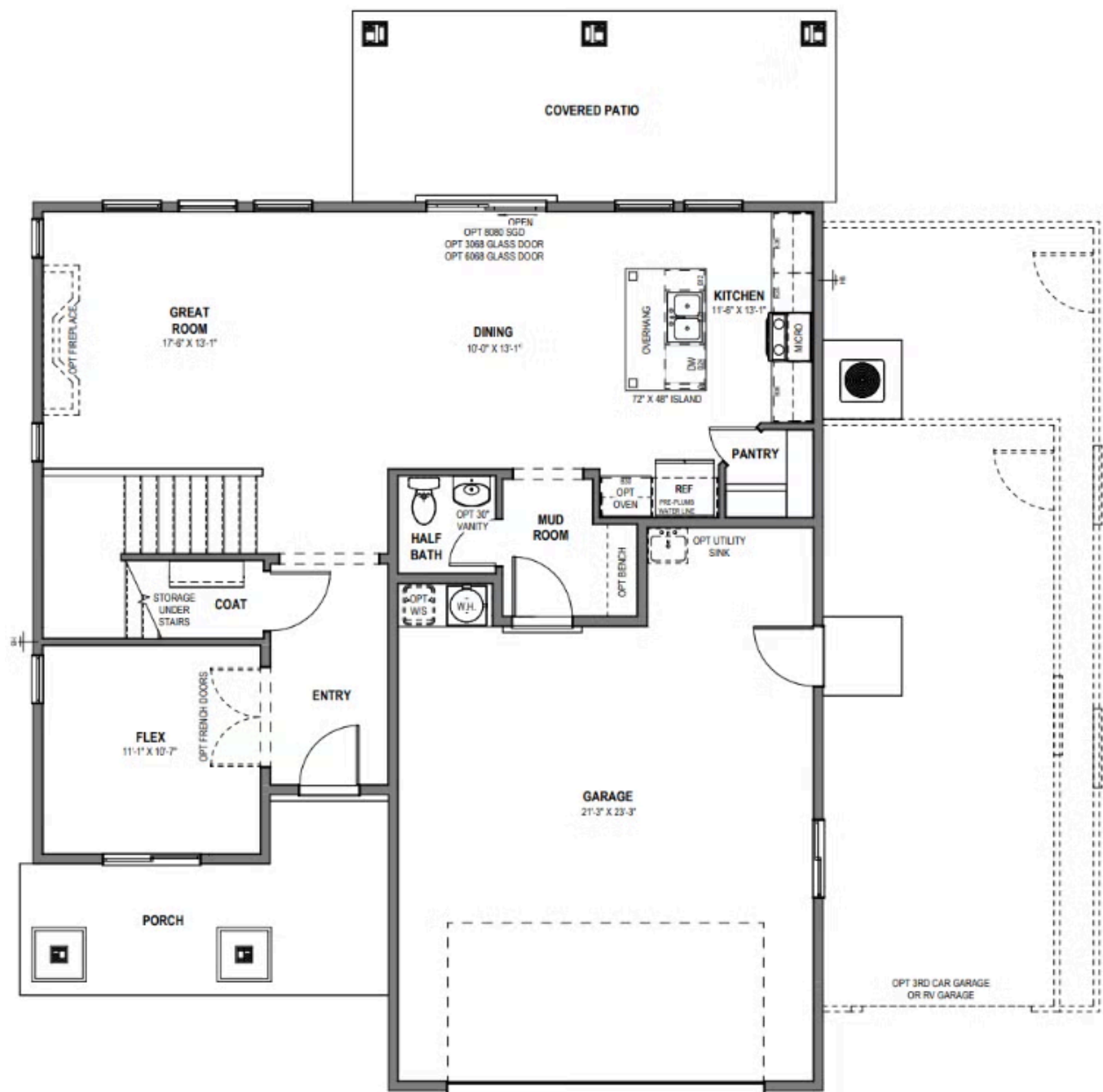


Desert Modern



www.visionaryhomes.com

MAIN LEVEL - SLAB ON GRADE

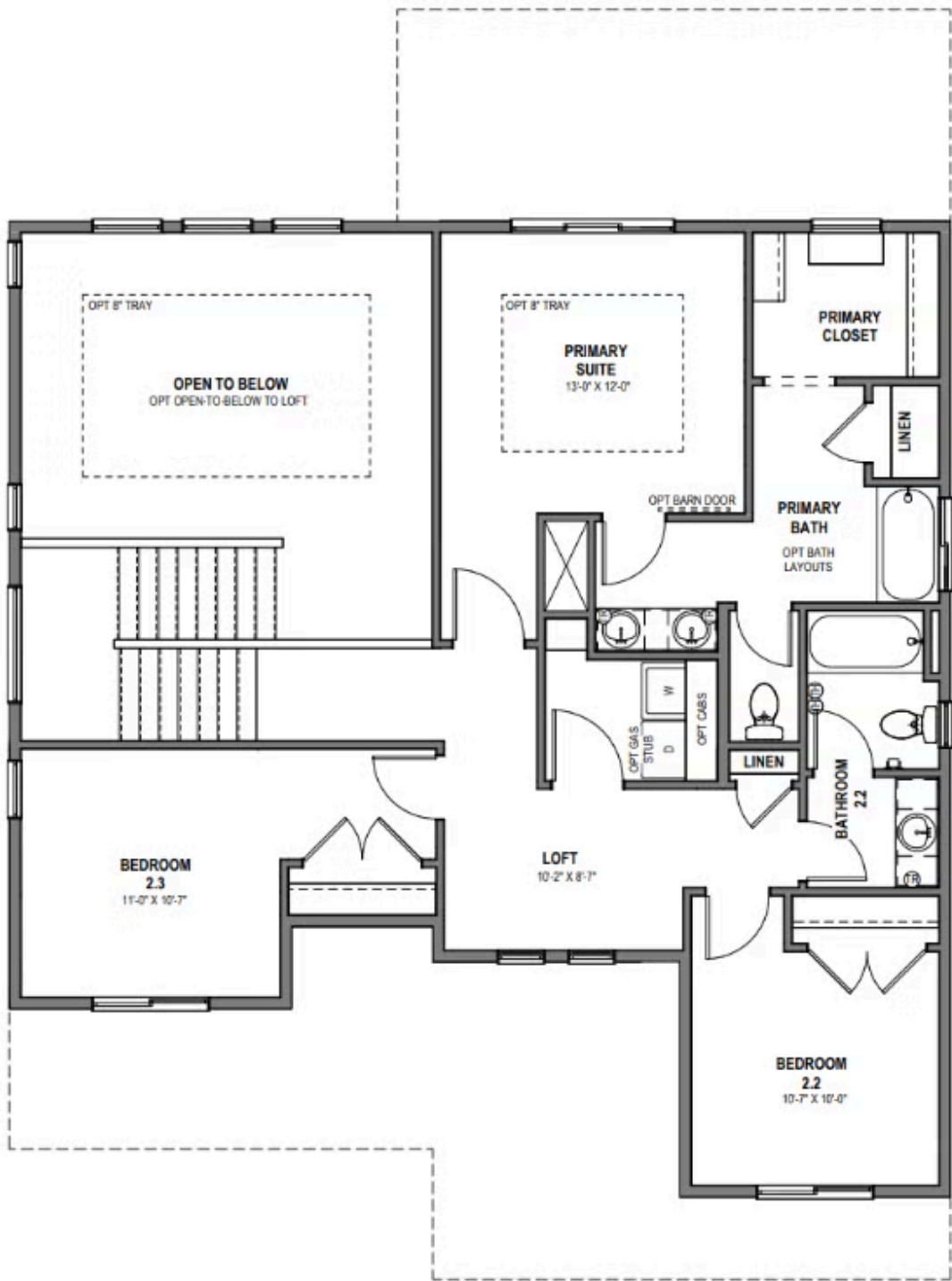


*Visionary Homes reserves the right to change prices without notice. Approximate square footage and options shown in plan may not be included in base price.



www.visionaryhomes.com

UPPER LEVEL



*Visionary Homes reserves the right to change prices without notice. Approximate square footage and options shown in plan may not be included in base price.