

www.visionaryhomes.com


Topaz

5 Elevations Available

 2,485 Total Sq.Ft.

 4 Bedrooms

 2.5 Bathrooms

 2 - 3 Car Garage

The Topaz is a charming cottage-style home designed for comfort and connection. The open-concept main floor seamlessly links the kitchen and family room, creating an inviting space for everyday living and entertaining. Step outside to a covered patio, ideal for year-round gatherings. Upstairs, a cozy loft offers additional living space, joined by a convenient laundry room, three secondary bedrooms, and a spacious primary suite featuring a luxurious bath and walk-in closet.



*Visionary Homes reserves the right to change prices without notice. Approximate square footage and options shown in plan may not be included in base price.

435.228.4702
visionaryhomes.com

www.visionaryhomes.com



Craftsman

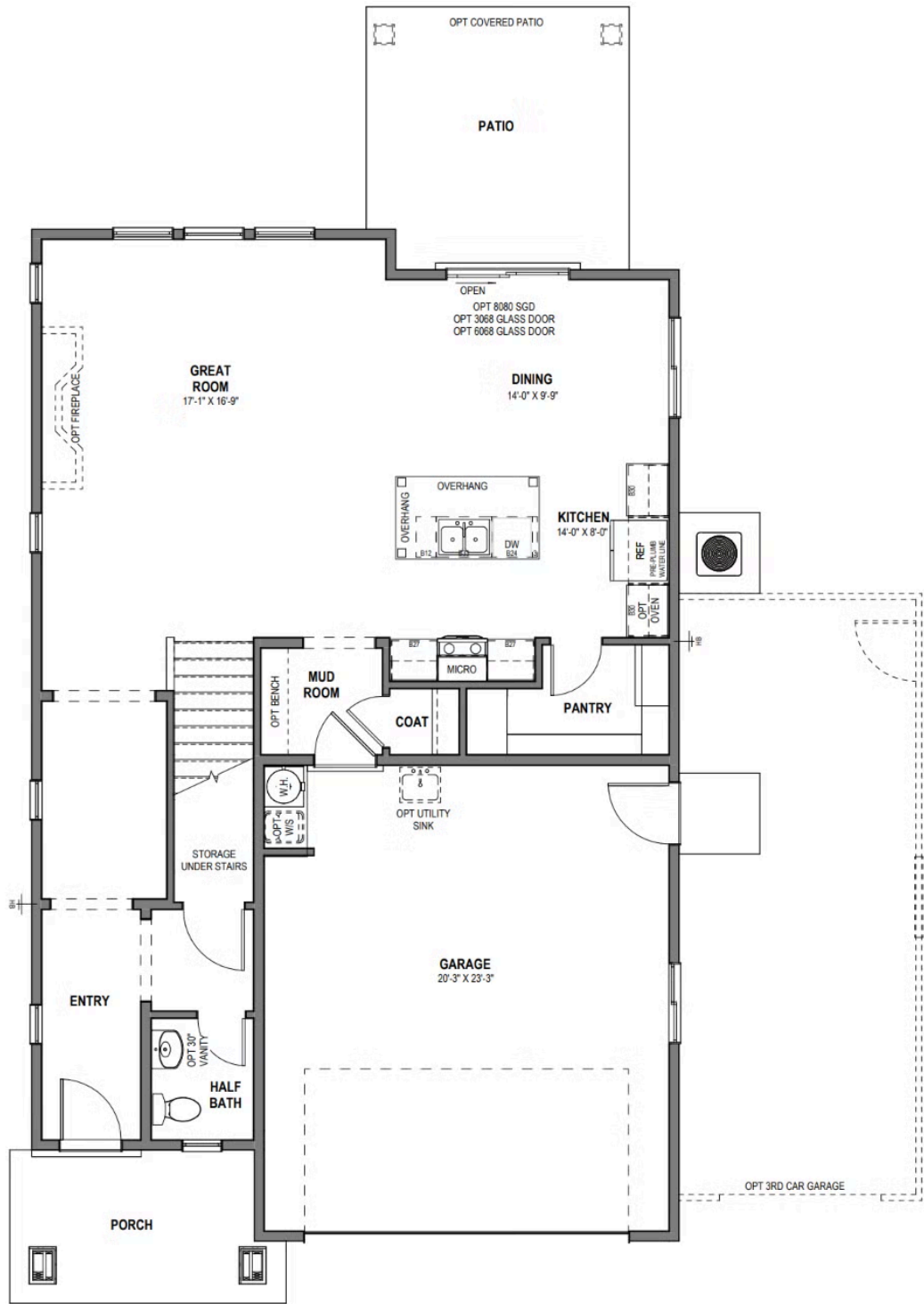


Modern



www.visionaryhomes.com

MAIN LEVEL - SLAB ON GRADE

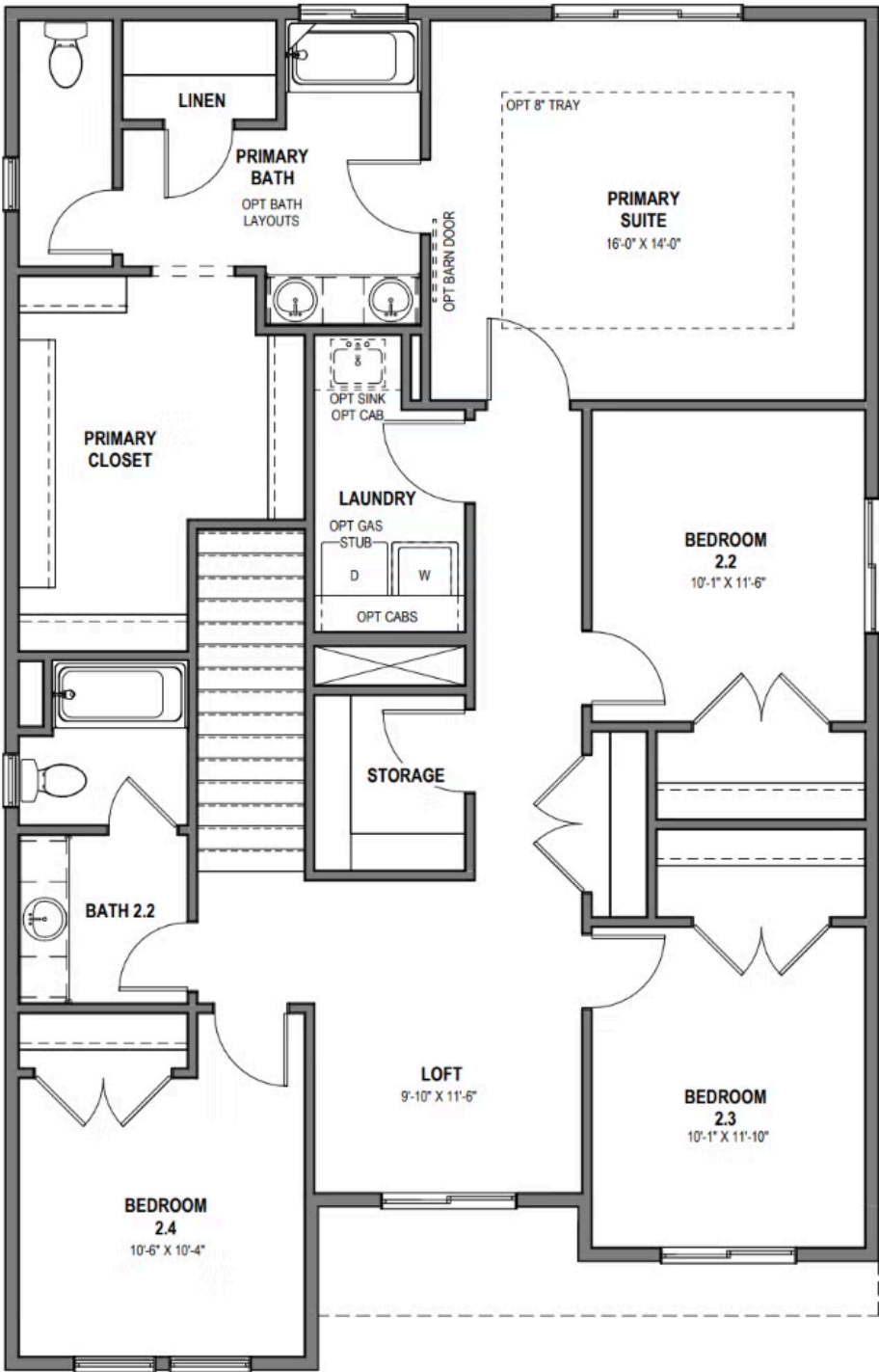


*Visionary Homes reserves the right to change prices without notice. Approximate square footage and options shown in plan may not be included in base price.



www.visionaryhomes.com

UPPER LEVEL



*Visionary Homes reserves the right to change prices without notice. Approximate square footage and options shown in plan may not be included in base price.