

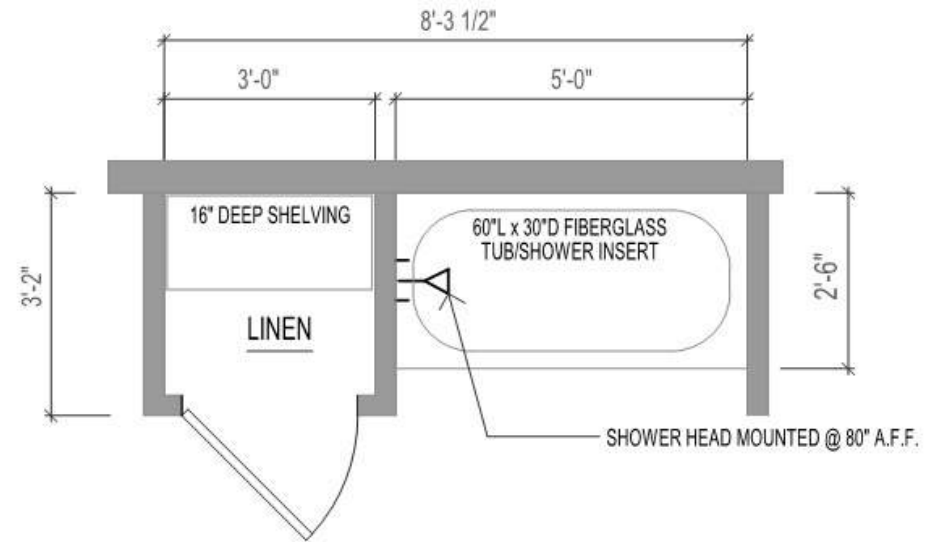
A modern kitchen with dark wood cabinets, a white countertop, and a large island with a white countertop and a marble-patterned base. Two white bar stools are at the island. A window shows a sunset landscape. A yellow rectangular box is overlaid on the center of the image.

TUB & SHOWER CATALOG

Visionary Homes Design

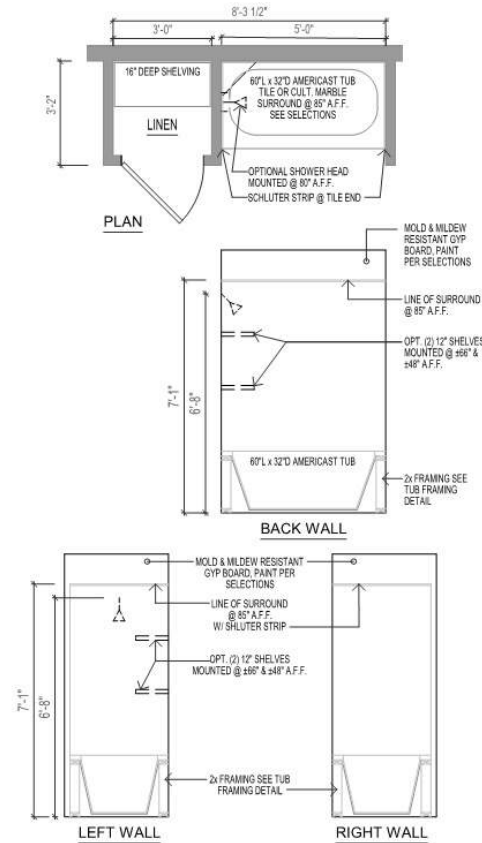
Secondary Bath 1

- 60"x30" Fiberglass Tub/Shower Combo



Secondary Bath 2

- Features a 60"x30" Cast Tub w/ 7' Tall tile measured from the finished floor. Comes with 2 corner shelves. May option to a cultured marble surround.

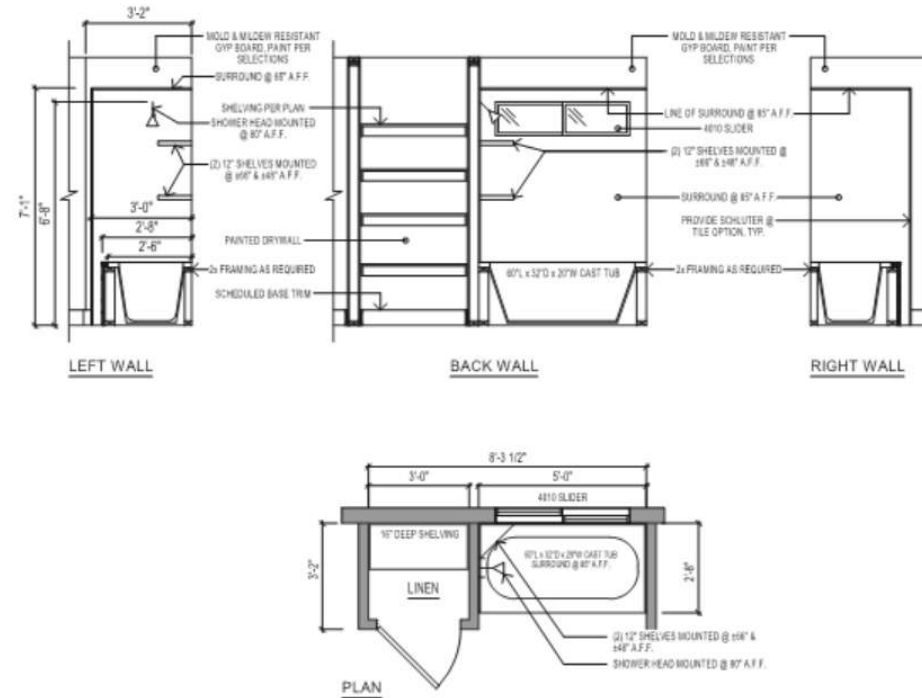


- CAST IRON TUB W/ SMOOTH CULTURED MARBLE SURROUND (60"L x 32"W x 14")

Primary Bath 1



- Features a 60"x32" Cast tub w/ 7' tall tile measured off the finished floor. 2 corner shelves included. Option to cultured marble surround available.

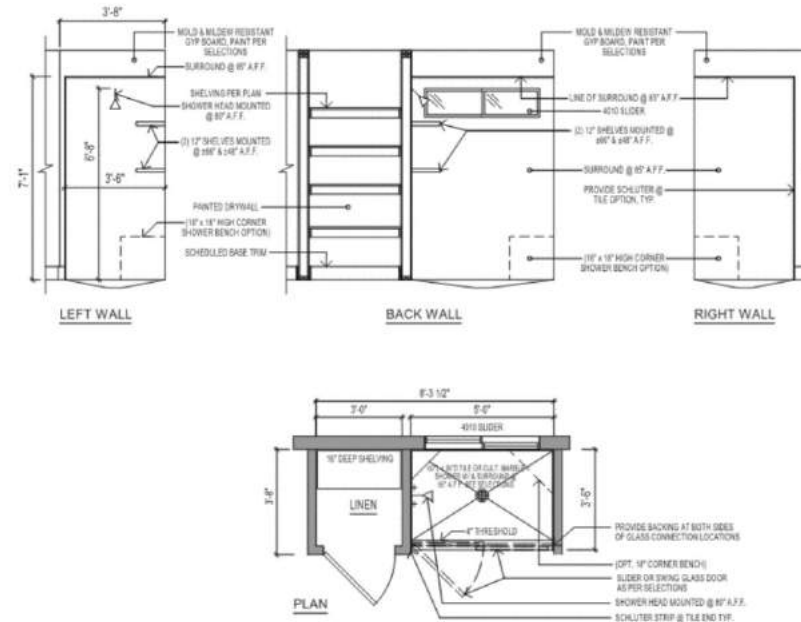


PRIMARY 1 BATH LAYOUT
SCALE: 1/2" = 1'-0"

- CAST IRON TUB W/ SMOOTH CULTURED MARBLE SURROUND (60"L x 32"W x 14")

Primary Bath 2

- Features a 5' Shower w/ 3' wide linen closet next to shower. 7' tall tile surround measured off the finished floor.



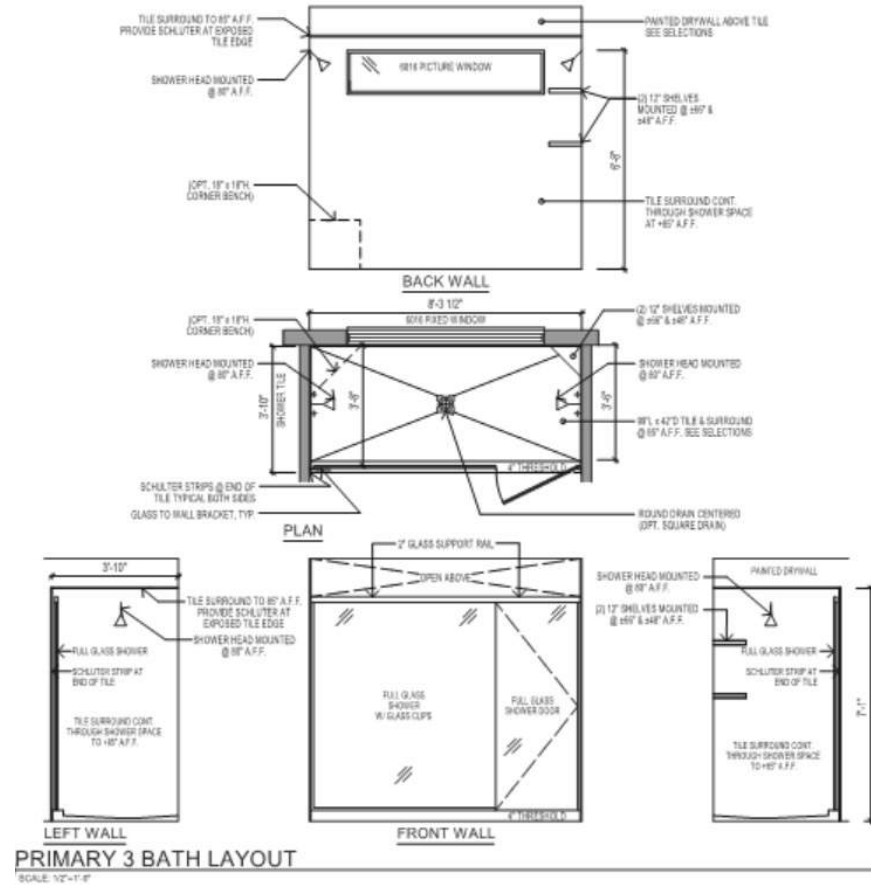
PRIMARY 2 BATH LAYOUT

SCALE: 1/2" = 1'-0"

- L5'xW3'-6"

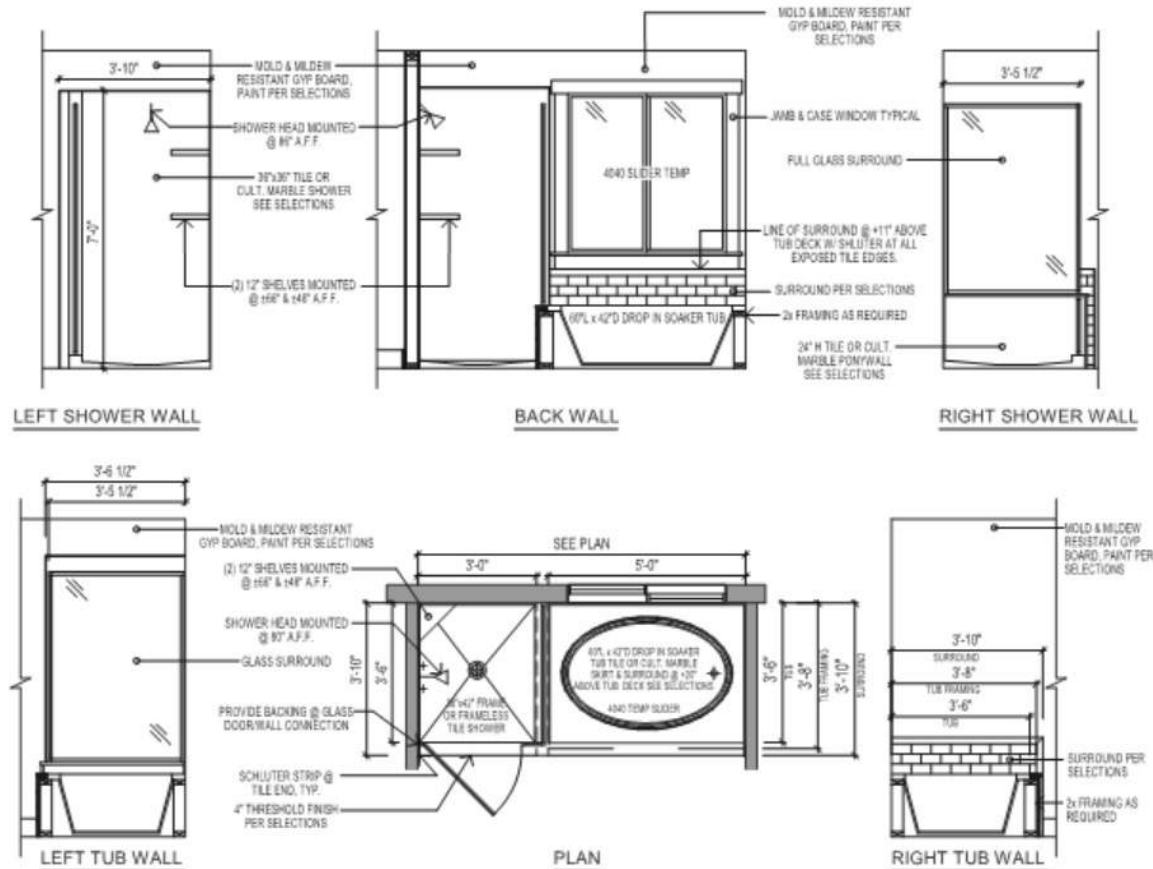
Primary Bath 3

- Features an 8' long shower 31/2"xW3'6" with a 6018 fixed window. 7' tall tile surround measured off of the finished floor. 2 corner shelves included.



Primary Bath 4

- Featuring a L60"xW42" soaker tub cultured marble or tile surround w/ a 3'x3'6" adjacent shower separated by a glass wall. 4'x4' window included.



PRIMARY 4 BATH LAYOUT
SCALE: 1/2"=1'-0"

