

www.visionaryhomes.com



Sale Price

\$429,900

 1,514 Sq.Ft.

 1,514 Sq.Ft.

 3 Bedrooms

 2 Car Garage

Stylish and functional, The Stonebrook floor plan features 3 beds and 2.5 baths that you'll love calling home. The main living space with the family room, kitchen, and dining provide the perfect space for everything from relaxing to cooking and eating with your family. Step upstairs to discover a spacious owner's suite with plenty of natural light from gorgeous windows, an owner's bath, and large walk-in closet. A laundry room is conveniently located on the top floor, along with a bath, and two bedrooms, one with a walk-in closet. This home is slab on grade.

HOME FEATURES:

- .15 Acre Lot
- Stonebrook Floor Plan with Traditional Elevation
- Bedrooms, 2.5 Bathrooms, 2 Car Garage
- Slab on Grade Home
- GE Appliances in Kitchen (Dishwasher, Oven, Microwave)
- Quartz Countertops in Kitchen & Bathrooms
- 8 lb Carpeting in Bedrooms & Upstairs Hallway

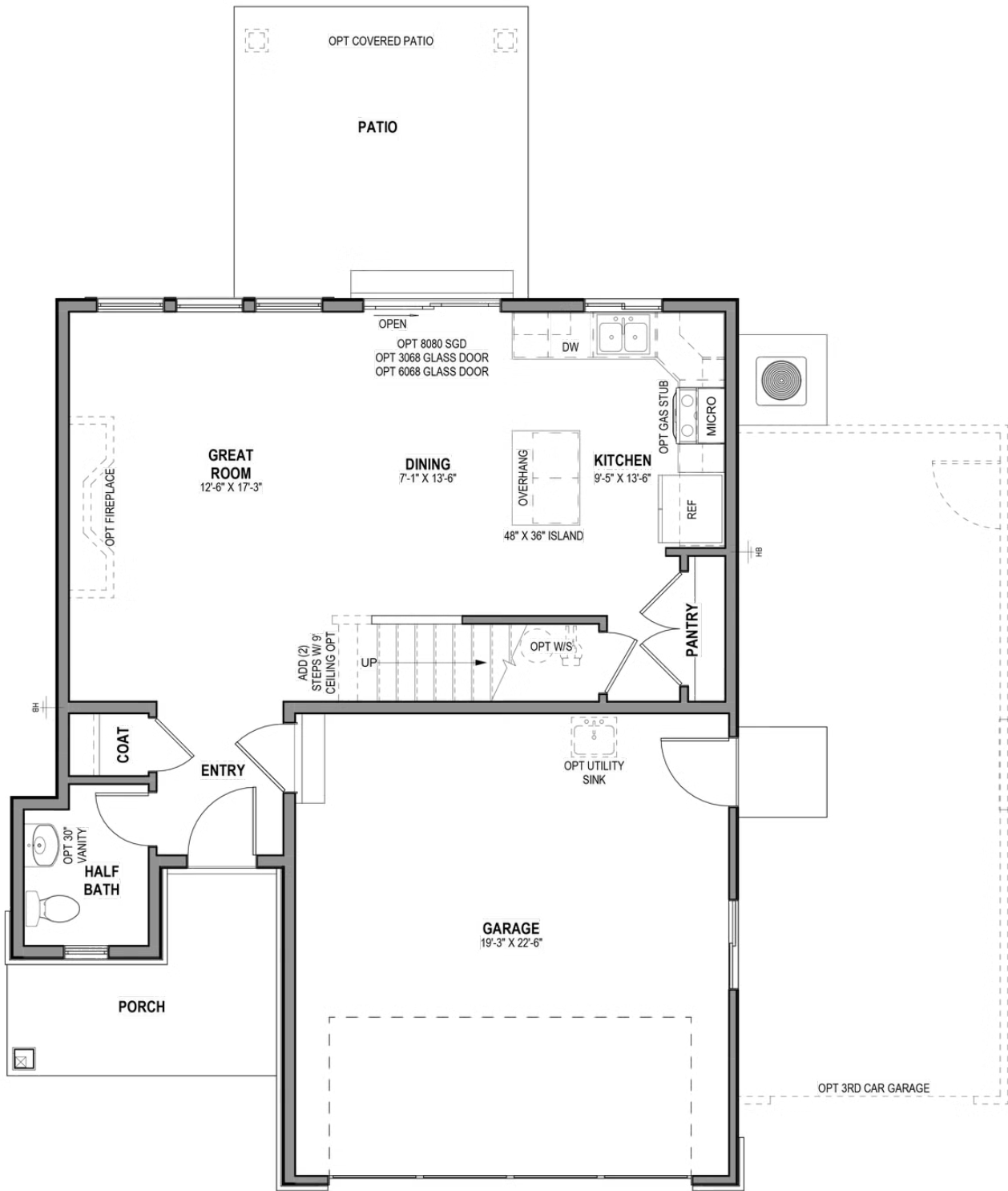
For more information or to make an appointment, please call 435-938-5698. Stop by our beautiful, model home at 574 North 600 West, Smithfield, UT 8433.



*Visionary Homes reserves the right to change prices without notice. Approximate square footage and options shown in plan may not be included in base price.

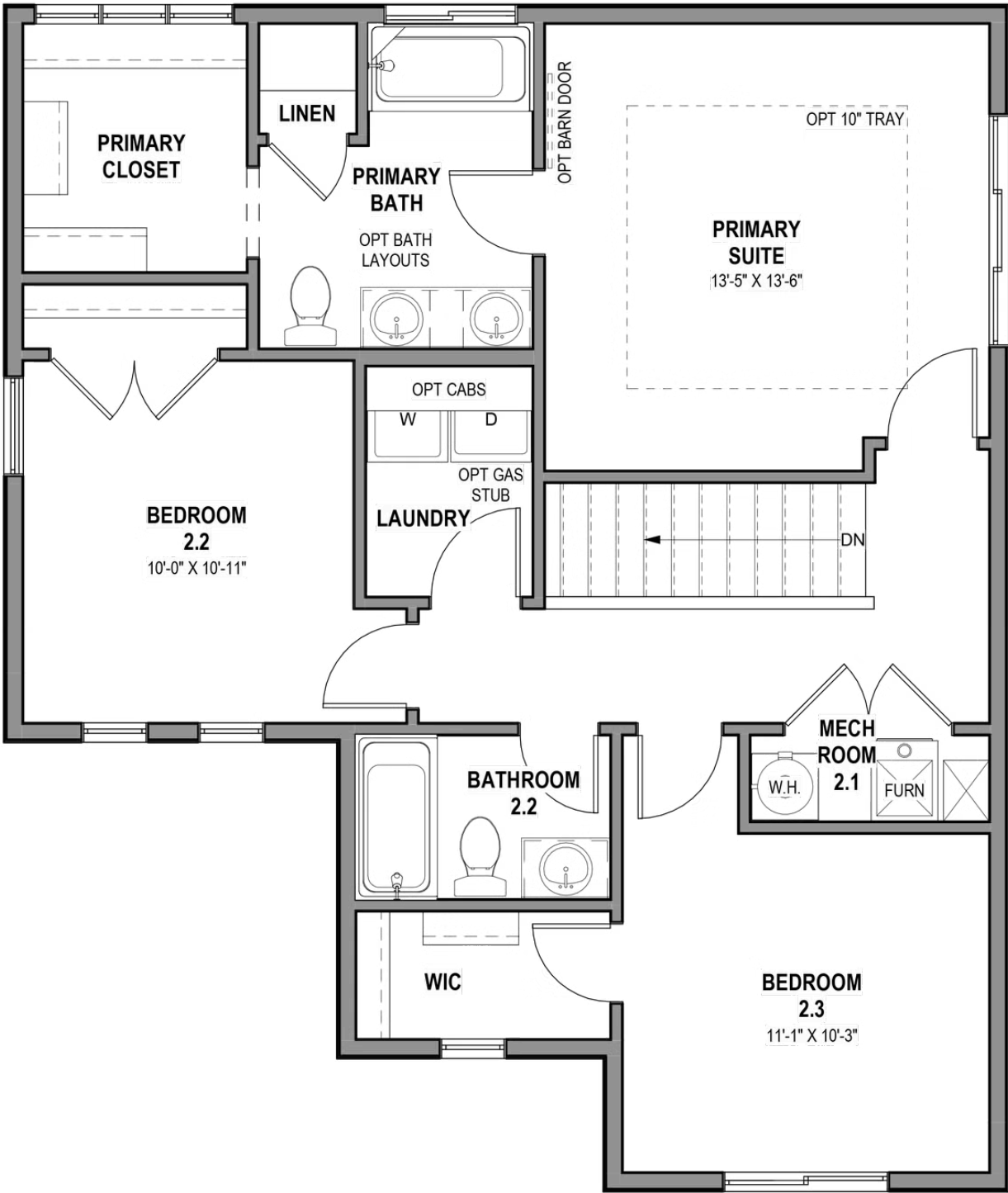
435.228.4702
visionaryhomes.com

MAIN LEVEL - SLAB ON GRADE



*Visionary Homes reserves the right to change prices without notice. Approximate square footage and options shown in plan may not be included in base price.

UPPER LEVEL



*Visionary Homes reserves the right to change prices without notice. Approximate square footage and options shown in plan may not be included in base price.